

CEW AWARDS 2025 WINNER –RETROFIT – SPONSORED BY STANTEC

Project : Prince Charles Hospital – Phase 1a,
1b & Phase 2 Refurbishment
Duration: October 2017 – September 2024

OVERVIEW

The Prince Charles Hospital (PCH) redevelopment in Merthyr Tydfil is one of Wales's largest and most complex healthcare retrofit programmes. Originally built in 1972, the hospital required major upgrades to meet modern standards while remaining fully operational as a live acute facility. Led by Tilbury Douglas, the nine-year programme combined refurbishment, retrofit, and new construction to deliver new departments, entrances, hydrotherapy pools, plant rooms, and car parking, while also completing the UK's largest live asbestos removal project. The result is a modernised, state-of-the-art hospital that enhances patient care, improves staff experience, and creates long-term value for the community.

KEY ACHIEVEMENTS:

Sustainability Gains

Energy-efficient systems, decentralised heating, and enhanced controls will cut consumption by 20%, saving £50,000 annually and reducing carbon emissions by around 150 tonnes each year.

Asbestos Removal Excellence

PCH became the UK's largest live asbestos removal project, with over 3,500m² of enclosures constructed to ensure the hospital remained safe and fully operational throughout.

Job Creation and Skills Development

The project generated 102 jobs, trained 33 apprentices, and donated 926 staff hours to education initiatives, leaving a lasting legacy for local employment and skills.

ADEILADU
ARBENIGRWYDD
YNG NGHYNMRU



CONSTRUCTING
EXCELLENCE
IN WALES



Stantec

Wales/Cymru

2025
Awards

Digital and BIM Integration

The team used ISO 19650-compliant BIM, Matterport surveys, and Asite's Common Data Environment to enhance collaboration, QA processes, and project transparency.

Improved Patient and Staff Experience

The hospital now benefits from new entrances, better patient flow, larger compliant departments, and improved layouts that meet modern clinical standards.

Exemplary Safety and Collaboration

The project achieved a perfect 45/45 Considerate Constructors score and a 93% client satisfaction score, exceeding industry benchmarks.

PROJECT TEAM

- Client: Cwm Taf Morgannwg University Health Board (Jeremy Holifield)
- Lead Contractor: Tilbury Douglas
- Engineering Consultants: WSP / Hoare Lea
- Engineering Delivery: Tilbury Douglas Engineering
- Architects: HLM Architects
- Cost Management: Gleeds LLP
- SME Partner: Shield Environmental Services

SME EXCELLENCE:

Shield Environmental Services, with 38 employees, played a pivotal role in delivering safe asbestos removal and remediation.

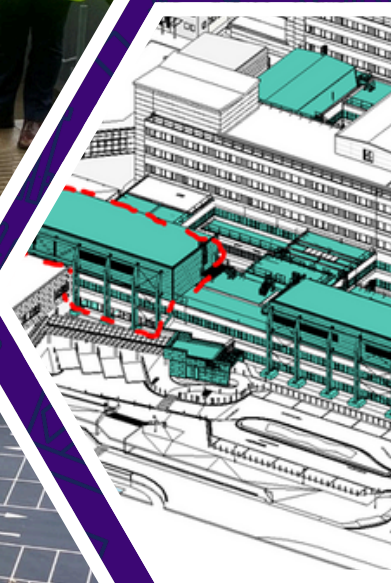
- **Excellence in Service:** Asbestos removal, fire safety, scaffolding, and insulation expertise safeguarded one of the UK's most contaminated hospital environments.
- **Award-Winning Standards:** Holding nine consecutive RoSPA Gold Awards, Shield demonstrated unwavering commitment to safety and quality.
- **Social Impact:** Their community contributions, including charitable giving and sustainable practices, amplified the positive impact of the project beyond the construction site.

Shield's involvement was essential to the success of the redevelopment, ensuring works could proceed safely in one of the most challenging live environments imaginable.

LESSONS LEARNT:

This landmark project highlighted the importance of flexibility, safety, and digital tools in complex live refurbishments. Lessons included:

- Early collaboration with all stakeholders to minimise disruption in sensitive environments.
- Integration of BIM and digital platforms for data-driven decision-making.
- Community engagement through jobs, apprenticeships, and educational outreach.
- Innovative asbestos and structural solutions that balance safety, cost, and programme requirements.



FIND OUT MORE:



www.linkedin.com/in/constructing-excellence-in-wales-9a4a7354



[@constructing_excellence_wales](https://www.instagram.com/constructing_excellence_wales)