



WYNNE
CONSTRUCTION

Delivering **COLLABORATIVE** **SUSTAINABLE** **SOLUTIONS**

The Construction Landscape in Wales

Opportunities, Risks & Solutions

Thursday 27th June 2024



ADEILADU
ARBENIGRWYDD
YNG NGHYMRU



CONSTRUCTING
EXCELLENCE
IN WALES



WYNNE
CONSTRUCTION

Delivering **COLLABORATIVE** **SUSTAINABLE** **SOLUTIONS**

Contents:

- ▶ Introduction *Cyflwyniad*
- ▶ Opportunities *Cyfleoedd*
- ▶ Risks *Risgiau*
- ▶ Solutions *Atebion*



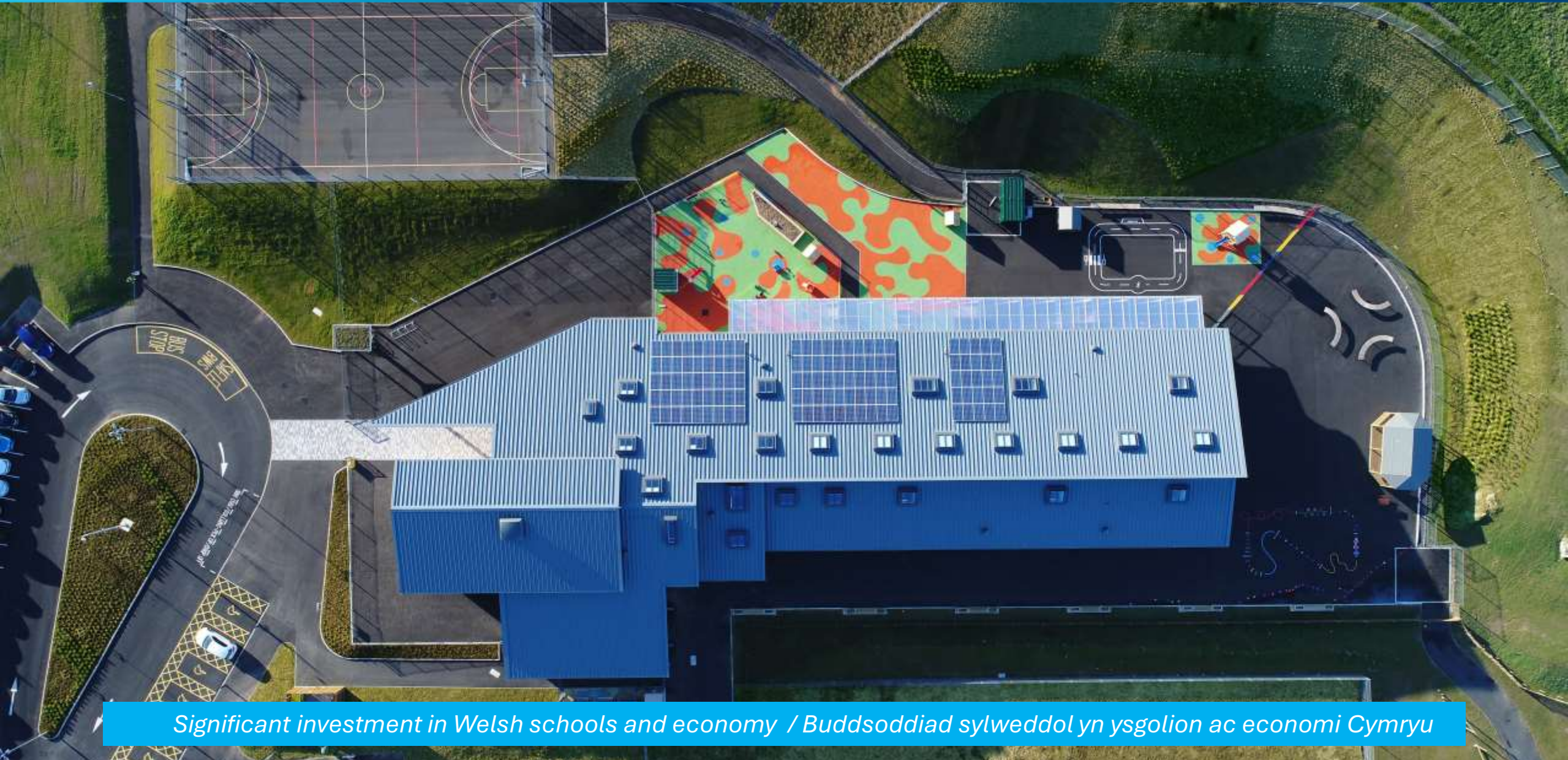
Wales is a leading country / Cymru yn wlad flaenllaw

- *Well-being of Future Generations Act 2015*
Deddf Llesiant Cenedlaethau'r Dyfodol (Cymru) 2015
- *Ranked 2nd in the world for recycling rates*
Yn ail yn y byd am ailgylchu
- *Degree apprenticeship funding*
Cyllid prentisiaeth
- *Leading the UK with net zero targets*
Arwain y DU gyda targedau sero net



Scan to find out more





Significant investment in Welsh schools and economy / Buddsoddiad sylweddol yn ysgolion ac economi Cymryu

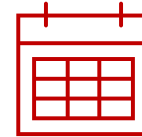
- Geographical limitations / Cyfyngiadau daearyddol

- Infrastructure *Seilwaith*
- Personnel *Personel*
- Supply chain partners – limited *Partneriaid cadwyn gyflenwi*



- Delays to project commencements / Oedi cyn cychwyn prosiectau

- Slow statutory approvals due to lack of authority resources- SABs
Cymeradwyaeth statudol araf oherwydd diffyg adnoddau awdurdod
- Delays placing pressure on construction periods
Oedi yn rhoi pwysau ar gyfnodau adeilad
- Protracted client-WG relations to secure funding and business cases
Perthynas hir rhwng cleient a LIC i Sicrhau cyllid ac busnes



- Tendering / Tendo

- Increased costs with bidding work in Wales (32% of overheads)
Costau uwch gyda Gwaith bidio yng Nghymru
- Unrealistic tendering periods (particularly single stage D&B)
Cyfnodau tendro afrealistig
- Re-tendering costs on framework projects (circa £30k per bid)- no added value
Costau ail-dendro ar brosiectau fframwaith



Social Value / Gwerth Cymdeithasol

- Unrealistic expectations - apprentice targets are unfeasible and there has been funding cuts to many apprenticeship schemes
Disgwyliadau afrealistig - mae targedau prentisiaid yn anymarferol a bu toriadau ariannol i lawer o gynlluniau prentisiaeth
- Difficulty in procuring labour and personnel, particularly in mid Wales, making it increasingly difficult to meet the high expectations set by clients
Anhawster wrth gaffael llafur a phersonél, yn enwedig yn y canolbarth, sy'n ei wneud yn fwy anodd bodloni'r disgwyliadau uchel a osodwyd gan gleientiaid
- Forces contractors to commit to artificially high outcomes leaving contractors in precarious positions.
Gorfodi contractwyr i ymrwmo i ganlyniadau artiffisial o uchel gan adael contractwyr mewn sefyllfaoedd ansicr
- The high targets have resulted in some contractors being deterred from bidding
Mae'r targedau uchel wedi arwain at atal rhai contractwyr rhag gwneud ceisiau
- Multiple social value reporting methods and measurements
Dulliau a mesuriadau adrodd am werth cymdeithasol lluosog

Environment & Net Zero / Amgylchedd a sero net

Additional costs associated with BREEAM

Costau ychwanegol yn gysylltiedig â BREEAM

Technology unavailable to meet net zero ambitions

Technoleg ddim ar gael i gyflawni uchelgeisiau targedau sero net

Costly waste regulations which have increased emissions

Rheoliadau gwastraff costus sydd wedi cynyddu allyriadau

Governance / Llywodraethu

- Lack of engagement in North Wales construction from WG
Difhyg ymgysylltu ag adeiladu Cogledd Cymru gan LG
- Concerns over 'skills drain' around Wylfa Newydd
Pryderon ynghylch 'draenio sgiliau' o amgylch Wylfa Newydd
- Future investment in North Wales?
Buddsoddiad yn y dyfodol yng Ngogledd Cymru?
- Future funding of projects- MIM?
Ariannu prosiectau yn y dyfodol - MIM?



- WG to further promote the construction industry to schools
LLC i hyrwyddo'r diwydiant adeiladu ymhellach i ysgolion
- Standardise social value reporting for public sector contracts
Safoni adroddiadau gwerth cymdeithasol ar gyfer contractau sector cyhoeddus
- Investment into rail/road infrastructure between the North & South
Buddsoddi mewn seilwaith rheilffyrdd/ffyrdd rhwng y Gogledd a'r De
- Streamlining tender process on frameworks
Symleiddio'r broses tendro ar fframweithiau
- Forum to bring North & South together
Fforwm i ddod â Gogledd a De at ei gilydd



The long-term vision for Wales?

Y weledigaeth hirdymor ar gyfer Cymru?





**Thank you for listening,
any questions?**

*Diolch am wrando,
 unrhyw gwestiynau?*

