

ADEILADU
ARBENIGRWYDD
YNG NGHYMRU



CONSTRUCTING
EXCELLENCE
IN WALES

Building for Future Generations

A new path for Welsh Built Environment

Annual Report 2024





Cat Griffith-Williams
Chief Executive
Constructing Excellence in Wales

Introduction

Thank you to everyone who continues to support our organisation, its mission and who champions the principles of the Constructing Excellence in Wales' movement.

What we do as a collective is important. The past 24-months, let alone the last year have not been easy. Tough market conditions have been a major threat to performance improvement and sector prosperity. Moreover, they have exposed weaknesses in the construction business model. However, demand for construction services remain extraordinarily strong. We need a unified sectoral vision towards productivity and efficiency. We need to unlock existing built environment potential faster, build more schools, hospitals, better infrastructure, housing and workplaces for future generations. Our sector is the great enabler for the economy and our shared passion and capacity means we will deliver what Wales; its clients and local people require.

But to deliver value, to build for future generations and for our industry to remain profitable and survive we must do it right because all of us operate in a sector limited by tight margins, but still delivering complex projects against a background of competitive tendering and increased legislative scrutiny. All of which means the work of CEWales is more important than ever. We continue to drive action and enable change to improve construction processes, practices and address systemic issues. Given the challenges coming up on the horizon - retrofit at scale, decarbonised newbuild and infrastructure recruitment,

and demands for skills and training, yet limited by and constrained finances - it is going to need that passion more than ever. We need to ensure the construction sector in Wales can learn from the past, recover, grow, and then thrive as we meet these challenges head on and deliver real, tangible value for everyone involved – from clients right through the supply chain.

The core of this is how we procure construction services. We must stop the 'race to the bottom' culture that focuses on price to the detriment of value. Procurement remains therefore, the fundamental process that determines project success. Our many Exemplar Case Studies and award winners have demonstrated that; it is the number one determinant of how well clients will benefit from productivity, innovation, collaboration, skills, and experienced supply chains. Managing risk and contracting with misaligned risk management strategies has been 'part and parcel' of what contractors do – often accepted as part of the procurement process. It is wrong. As we still see increasing insolvencies, the absolute need for clients and contractors to work together to ensure a fair and equitable balance of risk that is shared throughout the construction supply chain is integral. Which is why CEWales aims to work with all industry stakeholders to advocate a client led approach based on value and outcome

Our focus is creating the conditions for an innovation culture through positive disruption and collaboration



to unlock its potential, creating robust and resilient supply chain partners.

The requirements within the Building Safety Act and the Social Partnership and Public Procurement (Wales) Act will ensure this shift from 'lowest bid' to 'best quality.' This change is at the core of why CEWales exists – to promote, enable and drive best practice and create an environment for "next practice" to evolve.

Thank you for your help and support and we look forward to collaborating with you in the next year to deliver a better industry together.

“Procurement remains therefore, the fundamental process that determines project success.”

Get in touch

info@cewales.org.uk
www.cewales.org.uk



History

We have a strong heritage going back to the 1990's as seen from the Latham, Egan Reports and Never Waste a Good Crisis. We have been delivering best practice and knowledge transfer for over 20 years.



Vision

To deal with the complexity of these challenges, CEWales has been working with Welsh Government over the past 12 months on a comprehensive transformation strategy that will connect all policy and legislation in a unified whole as shown below.

This fundamental analysis will give the sector the right platform for a new strategic vision and mission for construction in Wales, one we can all connect with.

We aim for a Welsh Built Environment that is efficient, productive and well-connected.



A sector that enhances well-being and is prosperous, resilient, healthy, culturally thriving and globally responsible.

Mission

Positively disrupting the industry delivery processes to transform performance.

This takes time and continuous collaborative effort across all sector stakeholders to set the right enabling environment and delivery mechanisms for quality, value-based outcomes.

Thus far we have impacted the sector in diverse ways across activities, reach, thought leadership and strategic advisory. Our industry engagement draws from our extensive database of over 3000 stakeholders and 22 Welsh Local Authorities. Through G4C Wales, our next generation industry body, we represent next generation needs. Our website hosts over 260 publications on improving the sector and this year alone, we have delivered many events. Our regional networks span across Wales, three best practice clubs hosting site visits and shaping local needs.

In our recent partnership with the Welsh Government launched at the Welsh Construction Summit we provide Welsh Ministers with specialist construction advice, real time market intelligence and research capability. We act as the integral, impartial conduit between government and industry to shape strategic leadership for the sector in Wales. This involves several approaches that include but are not limited to, policy scanning, data analysis, clear communication, systems thinking and mapping. Our positioning gives us unique insight on change processes across industry players and their varying appetites for risk, timescales for delivery and influence. This presents an immense opportunity to improve visibility, cross-party understanding and bring the sector along in the journey to better outcomes.

Activity	Reach	Thought leadership	Strategic advice for public & private sector
Industry engagement	Industry networks / publications	Industry events	Delivery programmes Regional networks 3 best practice groups
 Contact with 3,000 stakeholders each month	 We work with the 22 Welsh Local Authorities	 Local clubs share best practice	

As we continue to work with all sector stakeholders, we are evolving how we work and interact with you. Our Strategic Aims are designed to deliver on the Vision and Mission in an open and transparent way.

Strategic Aims

Our Strategy carries the great work undertaken in the past, using a refreshed and dynamic approach aligned with evolving priorities within the sector locally and nationally.

The **Eight Strategic Aims** set our direction to deliver and grow sustainably.

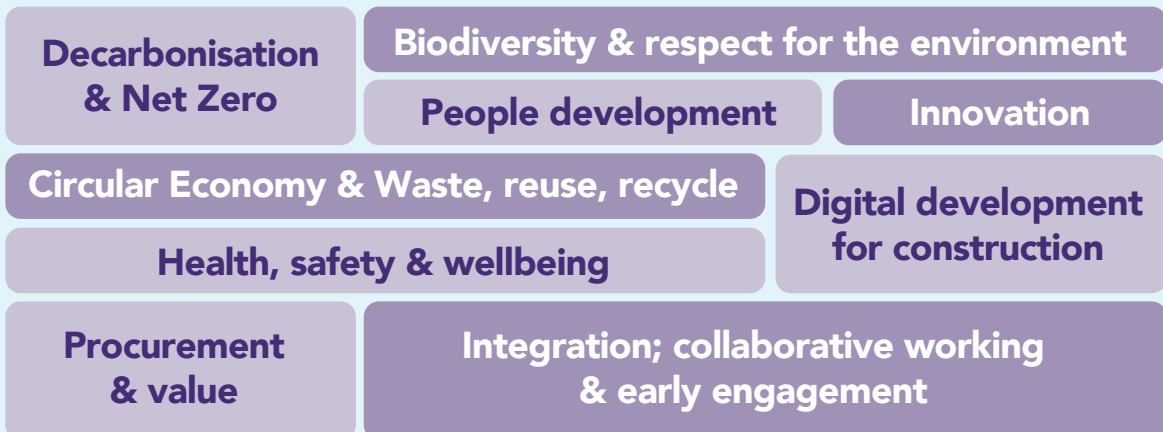


Strategic Plans & Outcomes

Our plan builds around Four Pillars...



informed by cross-cutting themes...



Some things of course are not changing – Our Values and founding principles remain the same.

Values

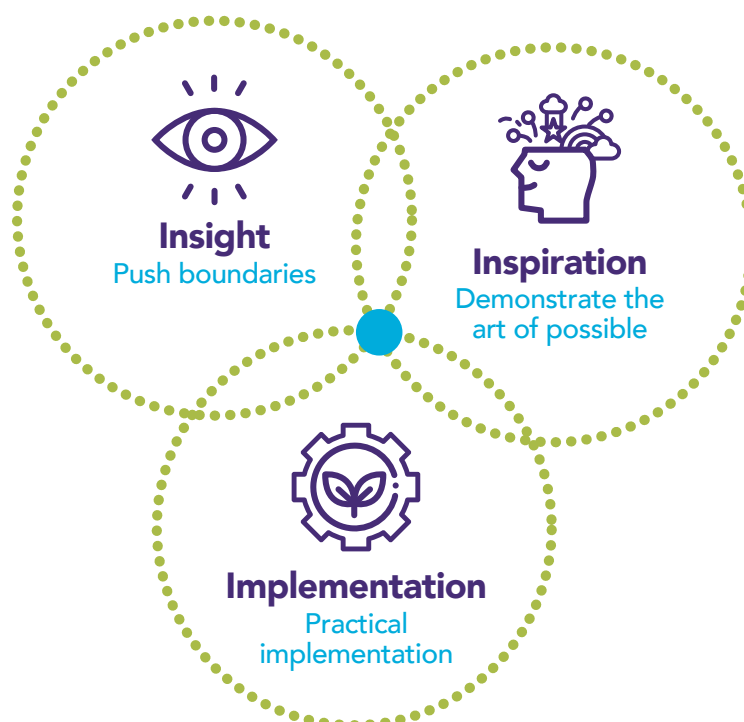
We champion collaboration and best practices across the industry and encourage individuals and organisations to share their experiences, knowledge and information with the wider industry. We are an independent, self-funding membership body campaigning to highlight the industry's role in creating a built environment in Wales that is fit for the future.

CEWales is the only cross-sector, cross portfolio organisation serving the construction industry built environment in Wales.

Constructing Excellence in Wales is the united voice of the Welsh built environment sector, representing each part of its supply chain. We work with all different elements of construction with

both large and small organisations in the public and private sectors to help the industry to improve its performance to deliver better quality and value for money to its clients and end users.

We adopt a progressive approach and remain authentic and trustworthy



Our relationship with Welsh Government



Llywodraeth Cymru
Welsh Government

Our relationship will improve the quality of engagement between government and the sector at a time when the economy is experiencing challenges.

The new Cabinet Secretary has echoed this sentiment at the recent Construction Forum held in October and noted the important role the sector plays in supporting economic development and well-being of Wales identifying Procurement, Cash Flow, Work flow as key areas for industry support.

Insight Reports

An integral aspect of this new working relationship is to make connections, create stronger partnerships and provide live sector insight to shape strategic direction and policy alignment. Our regular intelligence reports demonstrates this connectivity across the sector and governmental departments on important aspects such as Public Sector Procurement, Modern Methods of Construction, Offshore Wind, Circular Economy, Gender and Diversity, emerging State of Play and Hemp in Construction. Together with Welsh Government, this follows our strategic update on ongoing areas of work.

Strategic update

Wales Construction Policy Statement

Through our closer working relationship with Construction Excellence in Wales and the Construction Sector it has been identified that there is currently no overarching Construction Strategy in place from Welsh Government to give direction to the sector. We have therefore drafted an initial Policy Statement to set out the vision and ambition aligned to WG policy aims. We want this document to be a co-designed collaborative piece of work between WG and the Construction sector and once the draft is complete this will be issued for consultation via CEWales. The Construction Playbook for Wales will support the sector to deliver on the policy ambition and vision.

Pipelines / Workflow

Pipelines offer the opportunity for the sector to plan ahead and invest in both people and skills, however the sector often make the point that the 'visibility' of public sector pipelines are difficult to access.

Officials are now involved in reviewing how to improve transparency and accessibility to pipelines for Tier 1 contractors and SMEs alike and will bring forward proposals for your consideration in due course.

Procurement / Cashflow

Socially Responsible Procurement is about improving economic, social, environmental, and cultural well-being and achieving well-being goals through procurement.

To this end, the Socially Responsible Procurement Duty in the Social Partnership and Public Procurement Act requires contracting authorities to:

- Apply the overarching socially responsible public procurement duty to all public procurement.
- Set objectives for achieving the well-being goals and take reasonable steps to meet these for 'prescribed procurements' - defined as all construction contracts over £2m, all outsourced services contracts, and any contracts so specified in regulations (we have indicated that this is likely to include all contracts for goods and services over advertisement thresholds).
- Publish procurement strategies, a contract register, a forward look, and undertake annual reporting. The information that must be included in annual reports is to be specified in regulations.
- Consider and where possible include social public works clauses (model clauses) in construction contracts over £2m, and social public workforce clauses in outsourced services contracts.
- Notify the Welsh Government of a decision not to include the model clauses in outsourced services contracts and in construction contracts over £2m, and to do so well in advance of the advertisement of the contract where possible.

The model clauses for major construction contracts will lie within the following improvement categories:

- Prompt payment
- Employment opportunities
- Employment compliance
- Training
- Sub-contracting opportunities
- Environment – carbon reduction, sustainable management of resources, climate change resilience and biodiversity.

Whilst the Act has received Royal Assent, it is anticipated that the Socially Responsible Procurement duties will come into force towards the end of 2025.

Project Bank Accounts

The recent failure of a Tier 1 Contractor, into Administration is currently causing significant fallout in Wales amongst the supply chain where there is a significant degree of concern that many will suffer serious financial pressures because of non-payment of invoices.

The PBA system is designed to alleviate the financial pressures on the supply chain. They are designed as ring-fenced bank accounts through which to make payments directly and simultaneously to the main contractor and the suppliers included within the PBA.

Without a PBA in place, payments are made directly to the main contractor and then cascaded through the supply chain. The intention of PBAs is to ensure suppliers receive payments in a timely manner and provide protection in the event of contractor insolvency.

PBA policy is mandated for all Welsh Government departments unless there are compelling reasons not to do so, yet despite this, our recent experience of the ISG collapse shows that many of the sub-contractors are not protected.

Officials have now commissioned an independent Review, to be undertaken by CEWales, into PBAs and their operation in the sector. The report is expected towards the end of the year.

Several Education projects in Cardiff, Vale of Glamorgan and Blaenau Gwent are affected, officials are currently working with the Administrator to understand the full impact of the collapse, (you have received separate briefing on the specific details of this work).

PBAs are a condition of funding through the Sustainable Communities for Learning Programme for all appropriate projects.

PBAs are still relatively new, and partners have reported challenges in setting up PBAs, including:

- Main contractors have regularly raised the issue of the banks process to set up a PBA as being too slow, which can sometimes result in the contracting authority approving a project to start before a PBA is set up. The Commercial Policy team is working with the banks and has set of criteria for them to meet, which includes: setting up a clear entry point, developing a flow chart with expected timescales, and regularly reporting to WG on the number of active and upcoming PBAs. The aim of the agreement is to improve transparency with the banks and their PBA process.
- Occasionally, main contractors who are reluctant to use a PBA have used the banks process as an excuse to continuously delay the opening of a PBA. We are also aware of efforts by main contractors to pressure sub-contractors to opt out of a PBA.

Housing and Regeneration

Constructing Excellence in Wales (CEWales) is leading the review of commissioning and

procurement processes for new social housing. By serving as the united voice of the Welsh built environment sector, CEWales aims to foster improvements across the supply chain, engaging with both large and small organisations in public and private sectors. The immediate focus is on identifying and changing behaviours to promote best practices, with the ultimate goal of achieving sustainable cost management, a robust supply chain, and risk mitigation.

The next steps involve developing a prioritised action plan based on the interim recommendations, identifying key tasks for the coming months, The focus will be on creating actionable recommendations aimed at system change, particularly in procurement. Contracting options will be analysed to support a cultural shift from outdated practices, with case studies illustrating effective procurement. The report will be delivered at the end of March 2025 and support change management.

Education

The Sustainable Communities for Learning Programme

Over the past the Welsh Government's Education Department's Sustainable Communities for Learning (SCfL) Programme has completed its transition from fixed 5-year phases of investment to a more dynamic 9-year rolling programme of investment across the Education Estate in Wales. New 9-year Strategic Outline Plans (SOPs) have been received from all Further Education Institutions (FEI's) and all but 1 from the local authorities. Those received have been considered by the Programme's Education Investment Panel with recommendations approved by the Cabinet Secretary for Education subject to the usual programme business case process and availability of budget.

The outcome of this exercise currently identified 315 projects across the 9-year rolling programme period with a total cost estimate of around £5.5bn (at Q2, 2024). Welsh Government officials and its delivery partners are working with CEWales in ensuring visibility of the pipeline.

With its £346.5 million budget for 2024/25 the SCfL Programme continues to have a healthy pipeline of projects at various stages of design, construction and handover, financed through both traditional capital and the innovative revenue funded Mutual Investment Model (MIM). It is confirmed that the first 2 MIM Education school projects to be delivered in Wales – both in Rhondda Cynon Taf - opened to learners over the last few months. Their 3rd new primary school delivered through the MIM will open early in 2025 with Flintshire County Council's 3-16 all-through Mynydd Isa campus due for completion at the end of this calendar year.

Five further education projects are progressing under the MIM, all at different stages of the development process. The first of these – Cardiff and Vale College's twin-site project at Barry Waterfront and Rhoose, near Cardiff Airport – is looking to secure Financial Close early in the new year.

At the end of last month, the SCfL Programme's three Sustainable Schools Challenge local authority leads and their sector project deliver teams met in person for a day-long workshop Pontypridd. All three projects are at different stages and the workshop, which was supported by Down to Earth and CEWales, saw some exemplar collaboration between the design and construction project teams – sharing lessons learnt and best practice in each one of the project team's pursuit towards the innovative sustainable design, construction and operation for the three new primary school projects. The workshop also saw a presentation by the pupils from the Rhondda Cynon Taf project school on the enhanced engagement that they had had to date and how they were integrating this as part of their lessons and the new Curriculum for Wales. The children were amazing and very inspirational for the project teams.

The SCfL Programme's stakeholder review of newly developed Space Standard has concluded and is currently progressing through translation. Once published, this will provide a more meaningful tool for the design of new school and college buildings along with improved cost planning. This will replace Building Bulletins 98 and 99 and better reflect the commitments from Welsh ministers and the needs learners here in Wales.

The SCfL Programme Team's innovative Elemental Building Condition and Carbon Survey of every school and college building in Wales is scheduled for completion this side of the new year. Conclusion of this 18-month survey will provide every school and college with a digitised Route Map to Net Zero Carbon that will assist local authorities and further education institutions in not only maintaining their buildings but also in decarbonising them based on a pragmatic elemental building condition approach.

During the next twelve months, WG will be working closely with its local authority and further education institutions in developing their new 9-year rolling programme SOPs into projects that can be progressed through the Programme's business case assessment process.

Further workshops are planned for the three Sustainable Schools Challenge project teams as each project 'appraised and tested' and progresses its way through the development process.

Finally, WG is looking forward to the completion of its Elemental Building Condition and Carbon Survey, and in working with local authorities and further education institutions in translating the findings into meaningful decarbonisation strategies that can be delivered alongside programmes of capital maintenance work.

Foundational Economy

Construction is a key sector within our approach to growing the Foundational Economy. We have established a new set of baseline data so we have a much clearer understanding of the construction sector. We are analysing the data to help identify

and inform future priorities for supporting the sector in Wales to grow.

We have supported direct project activity aimed at nurturing the sector. We assisted five registered social landlords to engage with over 500 new contractors with whom they were not previously familiar to help grow capacity to deliver the optimised retrofit programme. We are providing direct financial assistance to enable contractors to attain PAS2030 accreditation, a pre-requisite for delivering works associated with the optimised retrofit programme and we have a shortage in suitably qualified contractors in Wales. Recognising the opportunities the sector represents for good careers; we have funded work to deliver net zero plumbing and electrical skills and work placements for 120 young people. These young people will hopefully go on to secure employment, helping alleviate some of the workforce pressures the sector is experiencing. We will be evaluating the results of these projects to help inform our future approaches.

For the first time, this autumn we delivered two Foundational Economy Expos, which included a strong focus on construction. We are analysing contract pipeline information submitted through the Expos to establish what this information means in the context of construction and undertaking a Lessons Learned review of the Expos to determine whether they will be re-run next year.

Transport and Infrastructure

Welsh Government Strategic Road Network: Major Asset Renewal (MAR) programme

The Welsh Government, together with their supply chain partners, have developed a prioritised list of significant maintenance renewal schemes, large in scale, and high priority regarding their criticality for ensuring the Strategic Road Network (SRN) suffers no loss of connectivity or serviceability.

This list, due to its size and potential impacts, has been prioritised with a bespoke tool that aligns legislative duties and policy priorities with set criteria which are then weighted in terms of importance.

An outline programme of these schemes – titled the MAR programme - was shared with the industry in Wales on the 10th October, chaired by Andy Falley, Deputy Director for the SRN Division, with key speakers including the Cabinet Secretary for North Wales and Transport, Ken Skates, and Matthew Lugg OBE, author of the Lugg review. This event was well received by the industry as a forward view, with a commitment to further engagement as the programme develops.

Currently, there are several schemes underway, all refurbishments and renewals of major highway structures, including the A494 River Dee Bridge and the A465 Llandarcy to Neath Abbey Bridge refurbishments.

The Welsh Government looks forward to engaging with the supply chain and developing innovative solutions to the challenges of large scale renewal schemes on these key strategic routes.

MAR prioritised schemes

	Overall	Est. £	Safety	Network	Benefits	Urgency	Carbon	Cost
A48 Briton Ferry Bridges Renewal	1	£134 M	Red	Red	Red	Red	Green	Green
A494 Queensferry River Bridge	2	£162 M	Yellow	Yellow	Red	Orange	Green	Green
M4 Malpas	3	£200 M	Red	Orange	Red	Green	Green	Green
M4 Port Talbot Renewal	4	£58 M	Red	Yellow	Orange	Yellow	Yellow	Yellow
M4 J24-25 Combined (Usk River, Hereford Rail and St Julians)	5	£22 M	Yellow	Yellow	Green	Orange	Orange	Orange
M4 Swansea North Renewal	6	£14 M	Red	Green	Green	Red	Green	Green
M4 Burrows Road Bridge Renewal	7	£5 M	Green	Orange	Green	Green	Red	Red
A465 Llandarcy - Neath Abbey Bridges Renewal	8	£10 M	Red	Yellow	Green	Green	Yellow	Orange
M4 Newport Overbridge Renewal	9	£13 M	Green	Green	Green	Yellow	Yellow	Orange
M4 Tawe River Bridge Renewal	10	£41 M	Green	Green	Green	Yellow	Yellow	Yellow
M4 River Ebbw Bridge	11	£40 M	Green	Green	Green	Green	Green	Green

Note: The colours represent alignment of the schemes with the criteria developed from legislation and policy, with red being strong, or high impact and green being lower alignment or impact.

Digital Transformation

Welsh Government published its Digital Strategy for Wales in 2021 which brought refreshed focus to the prioritisation of Digital to all facets of society in Wales. Following the recently successful exercise in the Agricultural sector which produced the Agri-tech action plan, the construction industry has been identified as a priority sector that will benefit significantly from increased digital adoption and innovation. Together with CEWales, a digital action plan for the sector is in development.

From UK Government’s BIM Mandate, the Construction Playbook and the introduction of the National Digital Twin Programme, to the increasing use of machine learning and artificial intelligence in infrastructure, the direction of travel is steered towards an increasingly digital future. A Digital Action Plan for the construction sector, will be instrumental in creating the conditions for an efficient economy acting as a key enabler of a sectoral strategic approach. It is well-placed to feed into the ongoing CEWales and Welsh Government joint development of a Construction Sector Policy statement adopting an interconnected strategic system where ambitions across procurement, net zero and safety (golden thread) are included. The action plan aims to address the varied landscape of digital in Wales and acknowledge its impact on businesses, projects and people (labour competency and capability). It will adopt a projects efficiency lens framed around the digitalisation of the built environment towards transformation.



We host regular industry stakeholder meetings which feed into the Welsh Government Construction Forum.



We have launched the Wales Construction Summit in North and South Wales, which is now an annual fixture with WG. Our consistent working groups such as the Procurement Steering Group informed the Common Assessment Standard development with WG. Our formal partnership with the Consortium of Local Authorities Wales (CLAW) enables continual engagement with all 22 Welsh Local Authorities.

We partner with 'Building' magazine to run annual focused roundtable events hosted by the Cabinet Secretary for Economy, Energy and Planning with a written publication on the discussions. Our commitment is publicised through our monthly newsletter, updated website content and increased visibility for Government officials and industry. We provide thought leadership at many events such as Building Safety, Social Mobility, Equity within the built environment and through partnerships like BEAC, the Built Environment Alliance Cymru.

We also note the unique dominance of the SME landscape in Wales and provide exhibition platforms for SME's to have

greater opportunities and improved visibility. Our leadership sits on various influential boards such as the Building for Wales Strategic Framework Board, Welsh Government Construction Governance Board and CLAW Leadership Board. We work together with industry to develop value-based measurement tools such as through our Exemplar Programme and the Sustainable Communities for Learning - Well-Being of Future Generations Act Directory.

We publish articles, case studies and reports on a regular basis to support the dissemination of good practice and lessons learnt from real experiences across the built environment. These are hosted on our website and delivered directly to our members. Our insight on stakeholder challenges and recommendations reports, hosted on the website, are built from direct engagement with our members; they provide live, valuable, anecdotal/qualitative input to feed into our regular intelligence reports for Welsh Government and help shape policy decisions.

We work with and support a wide range of organisations to improve their performance through collaboration.

Our aim is to improve the performance of the construction industry in Wales and add value through the promotion and sharing of best practices based on collaborative working and integrated teams. Our current programmes have been established in response to these aims and are aligned with our strategy. These span Sustainable Schools Challenge, Circular Economy, DfMA, Exemplar Programme, Active Travel, New Build Housing, Procurement, Research & Development, Retrofit, Enabling Net Zero, Welsh Ministerial Construction Forum and Intelligence reports.

2024 Key Highlights include:

Exemplar Programme

An Exemplar is defined as something worthy of being imitated or copied and this is exactly what CEWales continue to seek to achieve with this programme. Exemplars are intended to offer good practical examples of how to achieve Best Value Sustainable Construction solutions. We have been and continue to work with Transport for Wales to deliver a series of Exemplar programmes throughout Wales.

Retrofit Net Zero Carbon

In 2024 CEWales is keen to see that the domestic retrofit and energy efficiency sectors in Wales continue to develop skills and work practices which complement responsible retrofit. We seek to promote best practice in retrofit works and continued learning from existing schemes to support an increased uptake in retrofitting energy efficiency measures.

Circular Economy

CEWales have been working to explore the opportunity for the built environment sector from circular economy. As the biggest consumer of raw materials the opportunity is significant, approximately £1billion by 2035. To achieve real improvement the sector will need to change, transitioning from being less bad to being good. In its role CEWales will continue to identify opportunities, innovations and best practices key to delivering the best value built environment for Wales.

“As the biggest consumer of raw materials the opportunity is significant”

DfMA Wales – Industrialised Construction

A private sector led consortium, of which CEWales is a founder member, that has united to focus on the advantages of DfMA to Wales, as a key enabler to a more efficient construction industry. The Wales DfMA Programme will champion this industry transformation through an ongoing series of surveys, meetings, workshops, events, blogs, reports, projects, case studies, exemplars and evidenced examples of best practice to inspire every part of the industry's supply chain.

Active Travel

Wales has led the way in Active Travel and its goals are firmly aligned with the objectives of the Wellbeing Future Generations Act. It is critical that construction organisations and their clients understand the importance of active travel and how to apply it to their work. That includes housing developers, builders of schools and hospitals and planners and policy makers seeking to regenerate our high streets.

Procurement

CEWales believes that true value will only be delivered through collaborative working, integrated teamwork, strong client leadership and a commitment to people. This is why CEWales have championed and will continue to champion these behaviours. The procurement of construction related services offers major opportunities to add value to the construction process however, procurement practices that fail to reflect collaborative behaviours will not deliver the greater value that we demand. Through CEWales' established Procurement Steering we have been helping and positively challenging the procurement landscape in Wales and helping suppliers navigate the new procurement reform regime. We have engaged with the sector and gained consensus on the need and use for a Centralised Digital Platform. We work with public sector clients to deliver social, economic, cultural and environmental outcomes from all procurement.

CEWales host, facilitate and promote events and support the work of partner organisations in the construction industry. These are an excellent way to bring experts together, facilitate networks and enable meaningful relationships in the drive to an improved built environment.



Events held and upcoming

[Construction Summit Wales 2024 Cardiff](#)

[G4C Wales Digital Construction Bitesize Learning](#)

[SWW Best Practice Club Pentre Awel Site Visit](#)

[Princess Quarter - Copr Bay Swansea Site](#)

[SWW Best Practice Club Breakfast with Martin Nicholls, Swansea Council](#)

[G4C Wales AGM & Networking](#)

[CEW Awards 2024](#)

[Clean Growth Innovation Webinar](#)

[North Wales Construction Summit Wales 2024 Llandudno](#)

[G4C Wales Mumbles Coastal Defence Site Visit with Knights Brown](#)

[G4C Wales & CIC Wales Building Safety Act](#)

[Building UK Round Table with Welsh Government](#)

[G4C Wales Quiz Night](#)

[CLAW Sustainable Housing Conference](#)

[Offshore Wind & Floating Offshore for the Built Environment Round Table](#)

[CLAW AGM](#)

[Building Social Mobility in Construction with Browne Jacobson](#)

[G4C Wales Awards/Celebration of CEW Awards, Senedd](#)

[Wales Digital Construction Action Plan Round Table](#)

[Circular Economy in Construction with Cardiff Met](#)

[North Wales Construction Summit Wales 2025 Llandudno](#)

[EEOC Building, Wrexham University, Wynne Construction](#)

[Procurement Breakfast Briefings with WG](#)

[SE Best Practice Club](#)

[Newport Leisure Centre Site Visit with Wynne Construction](#)

[SE Best Practice Club](#)

[Newport Transporter Bridge Visitor Centre](#)

[Construction Summit Wales 2025 Cardiff](#)

Wales/Cymru

2024 Awards

Constructing Excellence in Wales Awards Winners 2024

CEWales Awards Winners

Our awards are open to all organisations and project teams involved in delivering buildings and civil engineering projects in Wales. Entries are welcomed from developers, clients, contractors, specialist and sub-contractors, engineers, of all disciplines, members of the design team and other consultants. The key factor is that the project, scheme, process or philosophy contributes to the Welsh built environment and can be celebrated as an example of best practice. Look out for the CEW Awards 2025 launching in December.

Building Project of the Year

The Interchange, Central Square, Cardiff

ISG Construction, Rightacres Property, Holder Mathias Architects, Arup, McCann & Partners, Gleeds



Client of the Year

Vale of Glamorgan Council



Climate Action Award

Morlais

Menter Mon
Morlais & Jones
Brothers Civil
Engineering



Delivering Value Award

Dragon Homes



Digital Collaboration Award

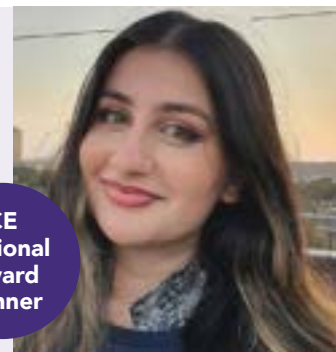
A465 GIS Portal – Delivering Industry Leading Digital Collaboration

Future Valleys Construction, Welsh Government, TACP, MJ Church, AtkinsRealis, Tarmac, Thames Valley Construction



G4C Future Leader Award

Aleena Khan – AtkinsRealis



CE National Award Winner

Environmental, Social and Governance Award (ESG)

Andrew Scott Ltd.



CE National Award Winner

People & Culture Award

Jubb Consulting Engineers Ltd



CE National Award Highly Commended

Infrastructure Project of the Year

Morlais

Mentor Mon Morlais & Jones Brothers Civil Engineering



Regeneration & Retrofit Award

Hafod Morfa Copperworks Redevelopment

Hydrock, Penderyn Whiskey, Swansea Council, John Weaver Contractors, Swansea University, GWP Architecture, Hydrock, TC Consult, Archer Humphryes Architects, Black Mountains Archaeology, Holloway Partnership, Geraint John Planning, Hiraeth Architecture, Expedite, Greenhat Consulting, Mann Williams



CE National Award Winner

Innovation Award

Gwynedd Remote Water Level Monitoring for Asset Management

YGC, Gwynedd Council, Decentlab & Welsh Government



Residential Property of the Year

Wood Street House, Central Square, Cardiff

ISG Construction, Rightacres Property, Holder Mathias Architects, Arup, McCann & Partners, Gleeds



CE National Award Winner

Integration & Collaborative Working Award

Satellite Radiotherapy Unit

Kier Construction, Aneurin Bevan UHB, Gleeds, Lee Wakemans



SME of the Year

Evans Electrical Ltd



Highly Commended

G4C Future Leader Award Amy Fogg – Balfour Beatty

People & Culture Award, Terra Firma

Outstanding Achiever

Dorian Payne - Castell Group

Constructing Excellence is a platform from which to stimulate, debate and drive much needed change in the Construction sector.

Our thought leading members are from the entire supply chain clients, industry and users share a vision for change through innovation and collaboration.

Corporate members

Andrew Scott Ltd
Arda Consulting Ltd
Arup
AtkinsRealis
BAM Construction
Blake Morgan
Bouygues UK
Browne Jacobson
Cambria Consulting Ltd
Cardo Group
CECA Wales
Celsa Steel UK
Circular Economy Innovation Communities
Coastal Housing Group
Curtins
Dragon Homes
Encon Construction
Geldards
Green Hat Consulting
Hugh James
ICE Wales
ISG
Jones Bros Civil Engineering UK
Kier
Knights Brown
Knox & Wells Ltd
Lawray Architects
Maple Consulting
Morgan Sindall Construction
Morganstone
Mott Macdonald
Newport Norse
NHS Shared Services Partnership
Oochitecture
Pobl Group Ltd
Read Construction
Rider Levett Bucknall
Sero
Siderise Group Ltd
Simtec
Stride Treglown
Swansea University
The Construction Hub Academy
Tilbury Douglas
United Welsh Housing Association
V3
Vinci Construction UK Ltd
Viro Consult
Wates Construction Ltd
Wildman Associates Ltd
Willmott Dixon
Wynne Construction

22 Individual members

Local authorities

Blaenau Gwent County Borough Council
Bridgend County Borough Council
Caerphilly County Borough Council
Cardiff Council
Carmarthenshire County Council
Ceredigion County Council
Conwy County Borough Council
Denbighshire County Council
Flintshire County Council
Gwynedd Council
Isle of Anglesey County Council
Merthyr Tydfil County Borough Council
Monmouthshire County Council
Neath Port Talbot Council
Newport City Council
Pembrokeshire County Council
Powys County Council
Rhondda Cynon Taf County Borough Council
Swansea Council
Torfaen County Borough Council
Vale of Glamorgan Council
Wrexham County Borough Council

Members priority areas

clean growth
decarbonisation
economic recovery
infrastructure
networking
net zero carbon
planning pipeline
procurement
skills whole life value
frameworks

Our best practice clubs which are located in South East, West and North Wales are locally based forums for individuals and organisations to learn about and share best practices through real examples within the built environment.

These informal clubs are made up of committed individuals who are willing to share their time, knowledge and experiences to support and promote best practices in the built environment in their area. Anyone who is linked to the built environment and its supply chain is welcome to join.

A club's aim is to be the place where members can learn, share and network together to improve their personal,



events includes Martin Nicholls, CEO, Swansea Council breakfast event, Princess quarter Copr Bay and Pentre Awel site visits. CEWales clubs are open to all, please get in touch if you would like to get involved.



organisational and business performance and their ability to work together collaboratively. Clubs achieve this through hosting a wide variety of topical and inspiring events with expert speakers, site visits, client led debates, best practice projects and social activities. Most recent



Regional Networks

G4C Wales (Generation for Change) is a driving force in Welsh construction with a focus on the next generation of professionals who have an interest in the Welsh built environment.

G4C Wales' core idea is to harness the power of this generation to drive change and improve the way the industry functions. Its goal is to drive change and innovation, through the development and

connection of the future industry leaders. This dynamic ambition means that G4C gives its members access to innovative industry thinking, enables networking with a broad cross section of industry professionals and provides opportunities to grow and learn through initiatives and events which are free to attend. Whether you are an established professional or a newcomer, involvement in these initiatives will provide an understanding of the strategic development and future shape of the construction industry.



G4C Wales Committee 2024

Sophie Latham Co-Chair	Blake Morgan
Harriet Wade Co-Chair	Bouygues UK
Katherine Parsons Vice Chair	AtkinsRealis
Thomas Beasley	Morgan Sindall
Coner Berner	Aecom
Lewis Bunch	AtkinsRealis
Antony Catris	Blake Morgan
Luther Jim	DB3 Architecture
Owain Morgan	Viro Consult
Elise O'Brien	Currie Brown
Adam O'Donovan	Rider Levett Bucknall
Joseph Palmer	Knights Brown
Dave Rossington	Powell Dobson

G4C Wales host monthly events focusing on industry education, personal development and networking. Events typically include site visits, careers fairs, published papers, and bitesize events. In 2024 G4C Wales has held the following events; Digital Construction Bitesize Event with Simtec, Rio Architects & McCann & Partners, Pen Y Dre School Site Visit with Morgan Sindall Net Zero Carbon, AGM & Networking presentation with Powell Dobson, judging the G4C Future Leader Award at the CEW Awards, Built Environment Summer BBQ with RICS Matrics, CIARB, CIOB, WIP & RTPI Young Planners, Team Social, Mumbles Coastal Defence Site Visit with Knights Brown, a very highly attended Building Safety event followed by another successful charity Quiz in aid of Llamau.

G4C Wales has previously launched a well-received multi-disciplinary Climate Change Response Paper, and recently attended Building the Future Commission Round Table with Welsh Government. In addition, G4C Wales has participated in speaking events such as CEW 2023 Award Celebration at the Senedd, the CEW Construction Summit 2024 and CEW Members Update 2024.

Governance & Finance

CEWales is a limited company led by its Chief Executive, Cat Griffith-Williams, and supported by Board Directors, Andrew Brown, Mark Davies and Mike Edmonds with an operational team of: Susan Selkirk, Company Secretary, Events and Programme Manager, Jia Afsar, Strategic Advisor & Research Lead & Lynn Broughton, Finance Manager.

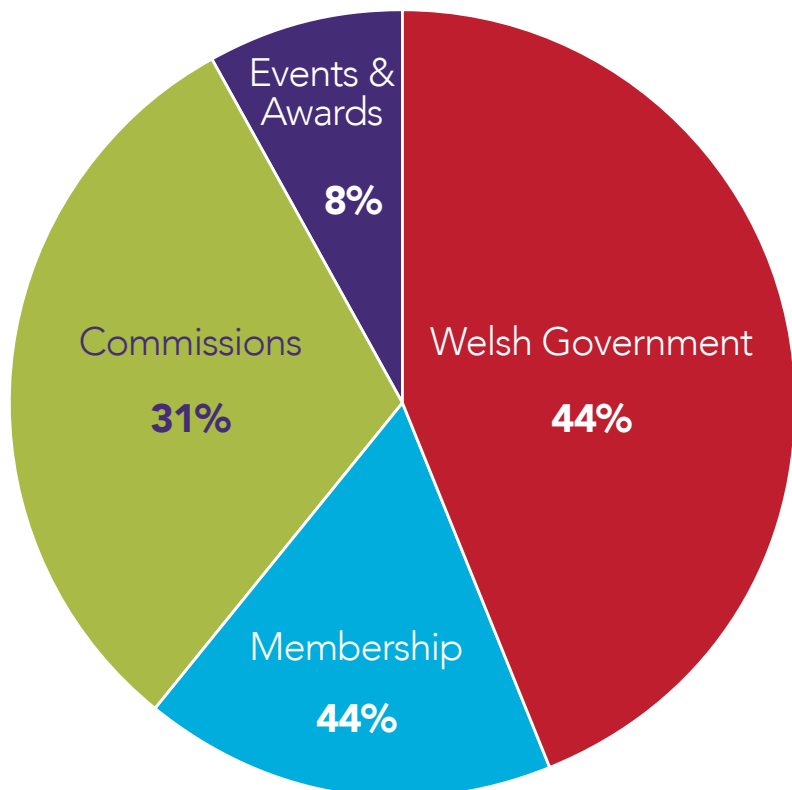
CEWales engages with and has the support of a range of stakeholders from across the Welsh built environment. These include clients in the public and private sectors as well as industry representative bodies and individual companies from the industry supply chain.

CEWales Board Members

Gareth Davies
Leigh Hughes
Clare Jones
Tony Norris
Stella Saunders

Knox & Wells
Felicitas Consultancy
Grasshopper
Geldards
Retired Architect, Past Managing Architect at Cardiff Council
& Past President of the Association for Project Safety

Constructing Excellence in Wales is funded through Welsh Government, Membership, Awards/Events and Commissions.





Constructing Excellence National Awards 2024

Winners

Aleena Khan
Andrew Scott Ltd
Hafod Morfa Copperworks
Wood Street House

G4C Future Leader
ESG
Regeneration & Retrofit
Residential Project of the Year

Highly Commended

Jubb Consulting Engineers Ltd People & Culture

Constructing Excellence in Wales

Registered address:
Suite 210, Creative Quarter
Morgan Arcade, Cardiff
CF10 1AF

info@cewales.org.uk
cewales.org.uk
+44 (0)2920 493322