

**ADEILADU
ARBENIGRWYDD**
Clwb De Orllewin Cymru



**CONSTRUCTING
EXCELLENCE**
South West Wales Club

Canolfan S4C Yr Egin

29-09-2017

Caerfyrddin / Carmarthen



Geoff Wildman

Cadeirydd / Chair

**ADEILADU
ARBENIGRWYDD**
Clwb De Orllewin Cymru



**CONSTRUCTING
EXCELLENCE**
South West Wales Club



CANOLFAN S4C YR EGIN

CANOLFAN GREADIGOL A DIGIDOL NEWYDD I GYMRU

A NEW CREATIVE AND DIGITAL CENTRE FOR WALES

*Creu dyfodol newydd i'r iaith a'r economi yng Nghymru
Creating a new future for the language and economy in Wales*



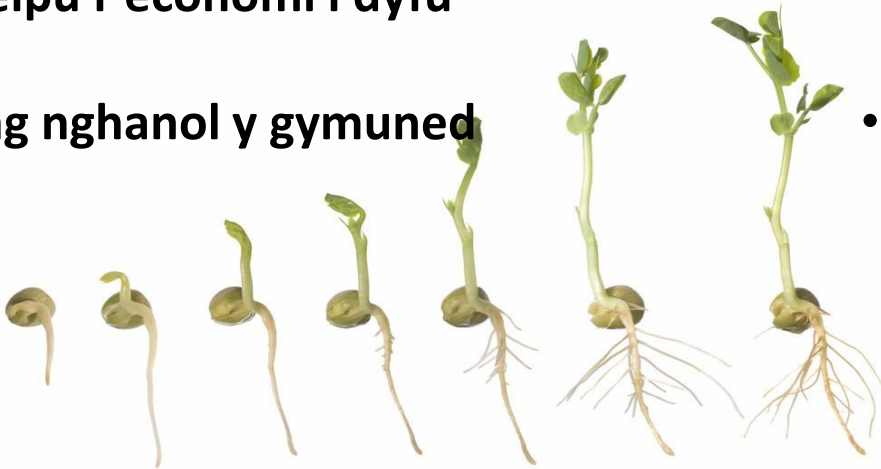
Y WELEDIGAETH / THE VISION

BYDD CANOLFAN S4C YR EGIN YN:

- Datblygu'r diwydiannau creadigol
- Datblygu a hybu iaith a diwylliant Cymru
- Helpu'r economi i dyfu
- Yng nghanol y gymuned

CANOLFAN S4C YR EGIN WILL:

- Develop the creative industries
- Develop and promote the Welsh language and culture
- Help the economy grow
- Be at the heart of the community



CYFLEOEDD O'R NEWYDD / NEW OPPORTUNITIES

- Cydleoli ystod o gwmnïau, sefydliadau a mudiadau
- Cydweithredu ac arloesi
- Ysgogi buddsoddiad pellach a thwf economaidd
- Meithrin talent newydd
- Caerfyrddin – ‘tref greadigol’
- Co-location of a range of companies and organisations
- Collaboration and innovation
- Stimulate further investment and economic growth
- Nurturing new talent
- Carmarthen – ‘a creative town’

Diweddariad S4C / S4C Update: Rhys Bevan

- Gweledigaeth S4C
- Swyddi Pencadlys
- Lleoliadau
- S4C's Vision
- Headquarters' Roles
- Locations

Gwireddu'r weledigaeth / Delivering the vision

Geraint Flowers

- Sefydlu canolfan greadigol o fri rhyngwladol gyda S4C, y darlledwr cenedlaethol, yn denant angori allweddol erbyn 2018
- Sefydlu clwstwr creadigol â rhyw 25+ o gwmnïau a sefydliadau creadigol a digidol wedi'u cyd-leoli o fewn y ganolfan greadigol, i hwyluso cyfnewid gwybodaeth rhwng y Brifysgol a sectorau diwydiannol cysylltiedig ar draws Cymru a thu hwnt.
- To establish an internationally renowned creative hub with S4C, the national broadcaster, as the key anchor tenant by 2018
- To establish a creative cluster of some 25+ creative and digital companies and organisations, co-located within the creative hub, to facilitate knowledge exchange between the University and related industry sectors across Wales and beyond.

Gwireddu'r weledigaeth / Delivering the vision

Geraint Flowers

- Cychwyn buddsoddiad a budd economaidd i Sir Gaerfyrddin a thu hwnt, a sicrhau manteisio i'r eithaf ar effaith 'eurgyrch' S4C ar draws y rhanbarth drwy greu swyddi o safon uchel.
- Codi statws yr iaith Gymraeg a'i diwylliant yng Nghaerfyrddin a'r cyffiniau mewn ffordd gyhoeddus, gyfoes a chyffrous.
- Initiate investment and economic benefit in Carmarthenshire and beyond, and to ensure that the S4C 'halo' effect is maximized across the region through the creation high value jobs
- Raise the status of the Welsh language and its culture in Carmarthen and the surrounding area in a public, contemporary and exciting way.

Effaith Economaidd / Economic Impact

Geraint Flowers

Buddiannau economaidd rhanbarthol sylweddol:

- Swyddi uniongyrchol S4C yn Yr Egin: 55 cyfwerth ag amser llawn
- Cyflogaeth uniongyrchol arall yn Yr Egin: tua 148 cyfwerth ag amser llawn (CALI)
- Cyflogaeth anuniongyrchol arall yn yr ardal: bron 650 CALI

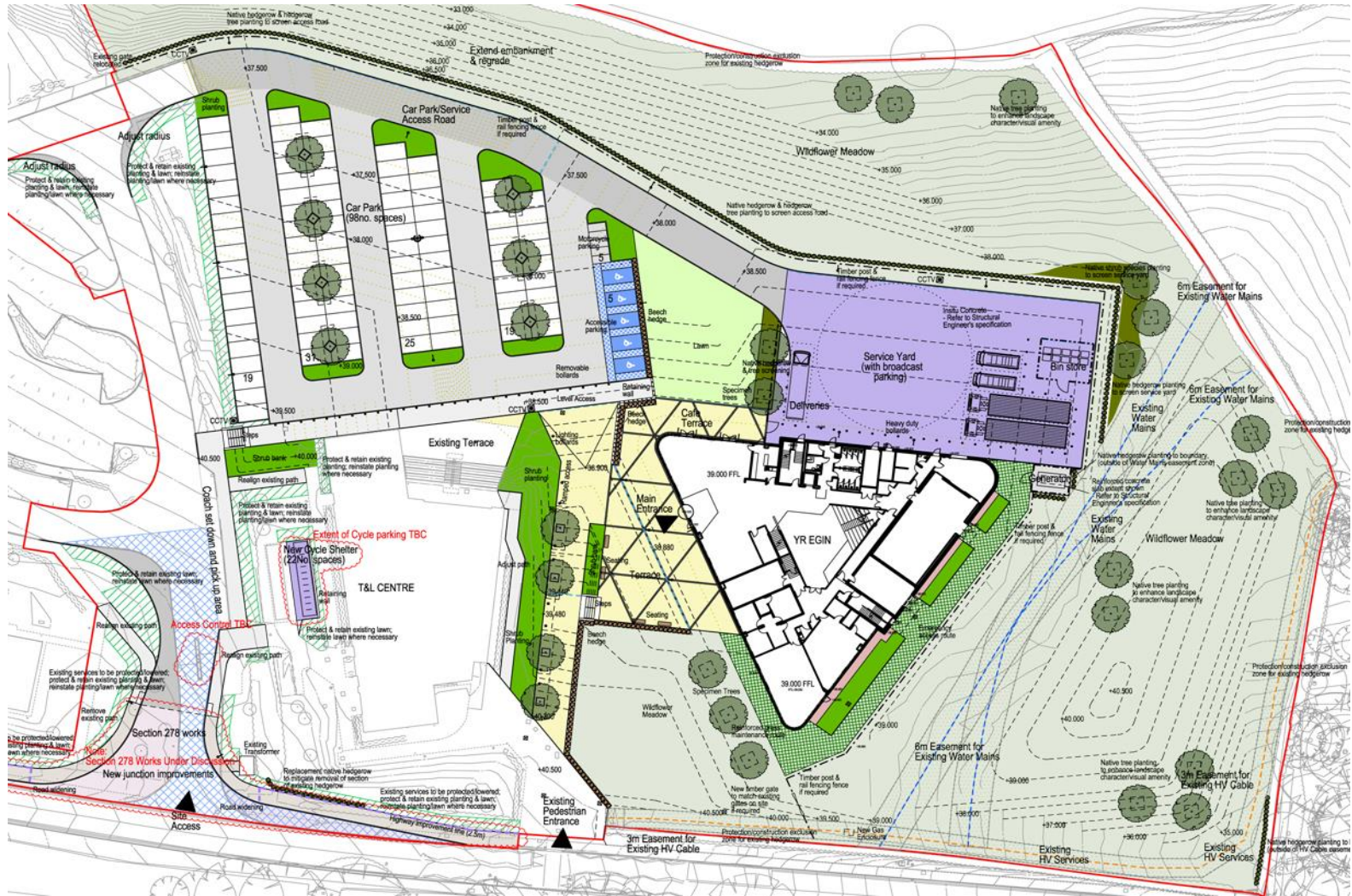
Mae hyn yn rhoi effaith cyflogaeth â chyfanswm o tua 850 CALI o fewn yr ardal.

Significant projected regional economic benefit:

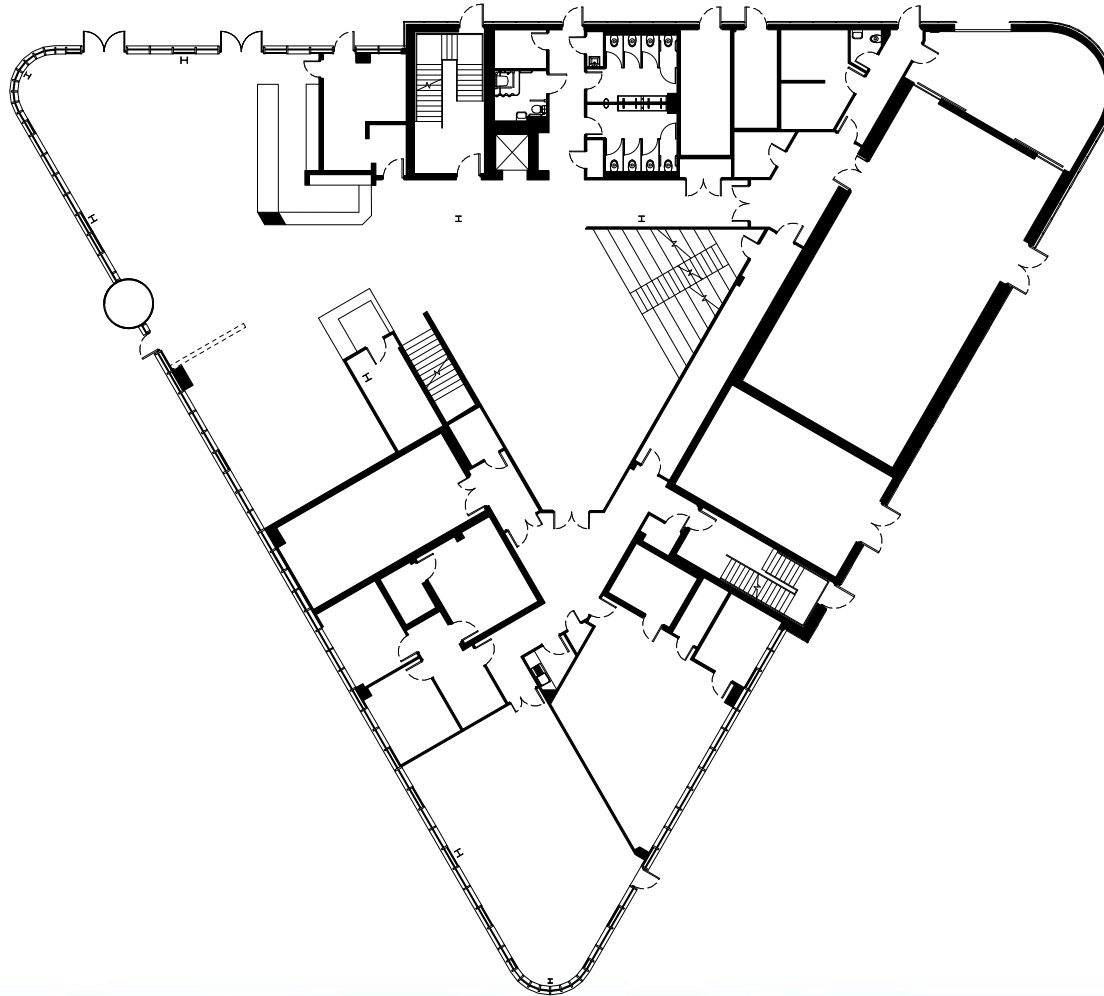
- Direct S4C employment at Yr Egin: 55 FTEs;
- Other direct employment at Yr Egin: approximately 148 FTEs
- Other indirect employment in area: almost 650 FTEs

This gives a total employment impact of approximately 850 FTEs within the area.

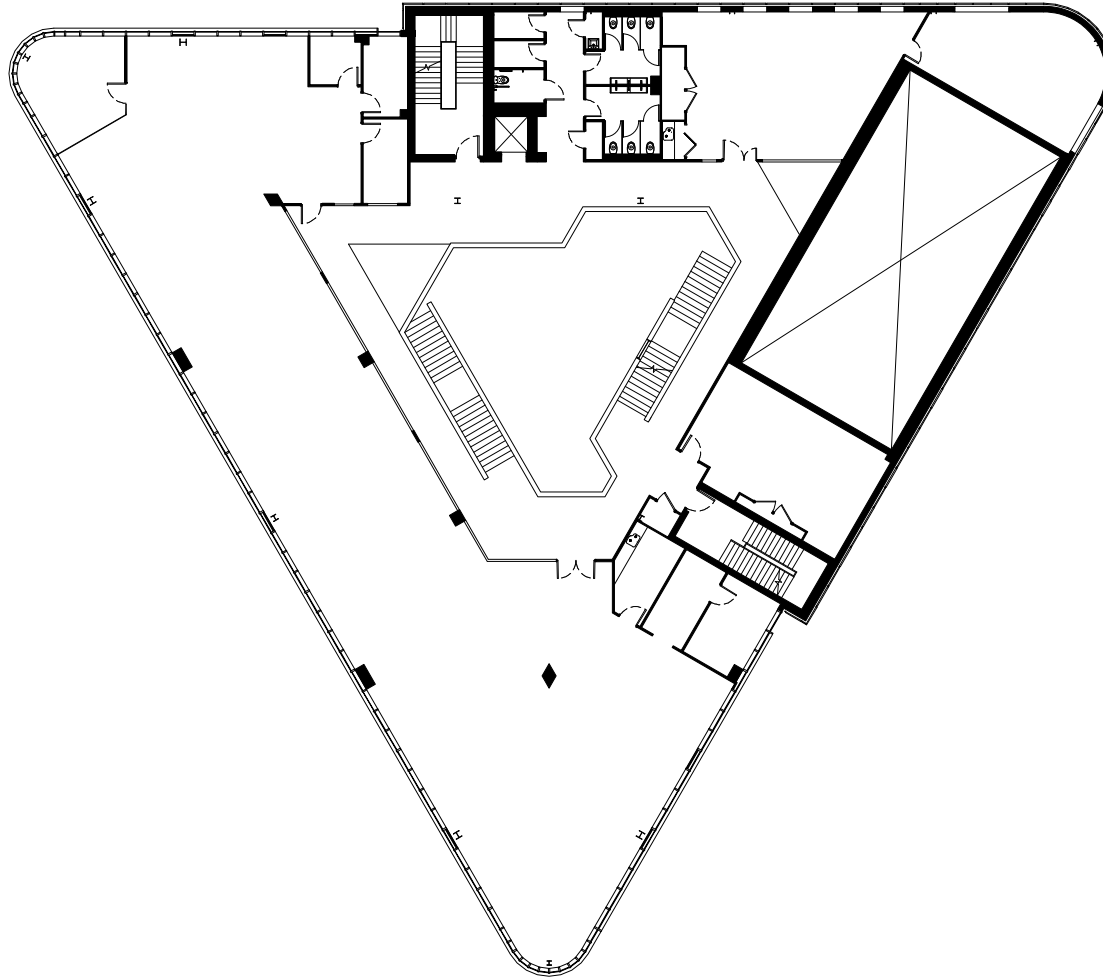
Cynllun y Safle / Site Plan



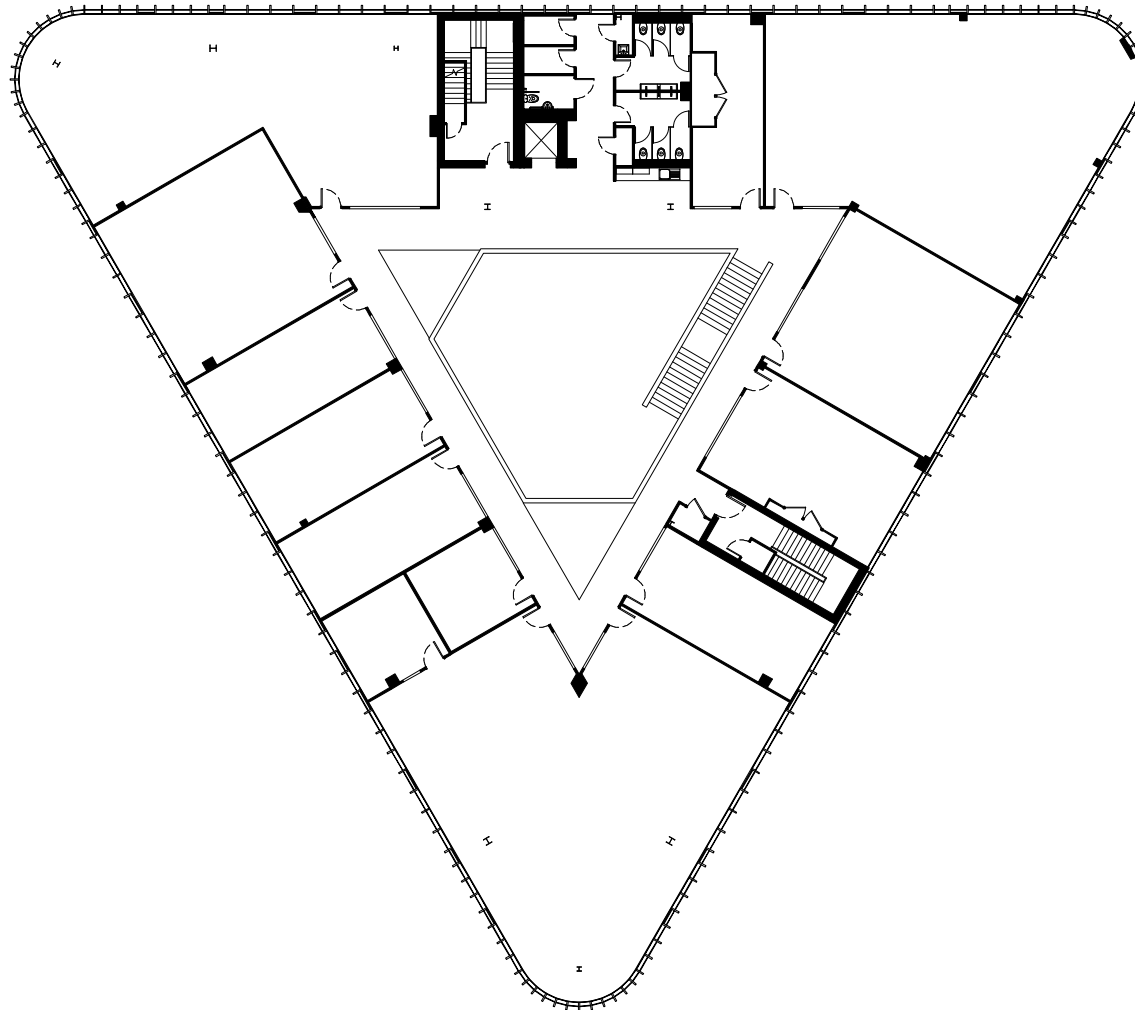
Llawr Gwaelod / Ground Floor Plan



Llawr Cyntaf / First Floor Plan



Ail Lawr / Second Floor Plan



Rheoli Contractau / Contract Management:

Alun Rhys Owen

- Ein Rôl; Mott MacDonald
- Briff / Rhaglen / Cyllideb
- Dethol Contractau / Caffael
- Gwersi a ddysgwyd
- Datblygu'r Dyluniad
- Arolygon Cyn Contract
- Risg a Rheoli Gwerth
- Rheoli Contractau
- Adroddiad Dangosfwrdd gan y Rheolwr Prosiect
- Statws Cyfredol y Prosiect a Dyddiadau Allweddol
- Mott MacDonald; Our Role
- Brief / Programme / Budget
- Contract Selection / Procurement
- ECI / Lessons Learned
- Design Development
- Pre Contract Surveys (WI/SI)
- Risk & Value Management
- Contract Management [Tracker]
- PM Dashboard Report
- Current Project Status & Key Dates

Dylunio a Gwaith Adeiladu / Design and Construction: Steve Langford – Dylunio / Design

- Lluniadau Cam 5 gan y Tîm Dylunio (BDP) bellach wedi eu cwblhau
- BDP yn adolygu lluniadau manwl gan Gcontractwr yr Amlen
- Kier yn bwriadu penodi contractwr Nenfydau a Pharwydydd ym mis Hydref, sef y pecyn mawr diwethaf i'w ddyfarnu
- Cynhaliwyd gweithdai ar bob cam allweddol ac ynghyd ag ymgysylltu cynnar gyda chontractwyr, mae hyn wedi galluogi proses gymeradwyo ddiraffferth ar gyfer dyluniadau manwl
- Stage 5 Drawings from Design Team (BDP) are now Complete
- BDP are now reviewing detailed drawings from the Envelope Contractors
- Kier intend to appoint the Ceilings and Partitions contractor in October which will be the last major package to award
- Workshops have been held at all key stages and that together with early involvement with contractors has allowed for a smooth approval process of contractors detailed design

Dylunio a Gwaith Adeiladu / Design and Construction: Steve Langford – Gwaith Adeiladu / Construction

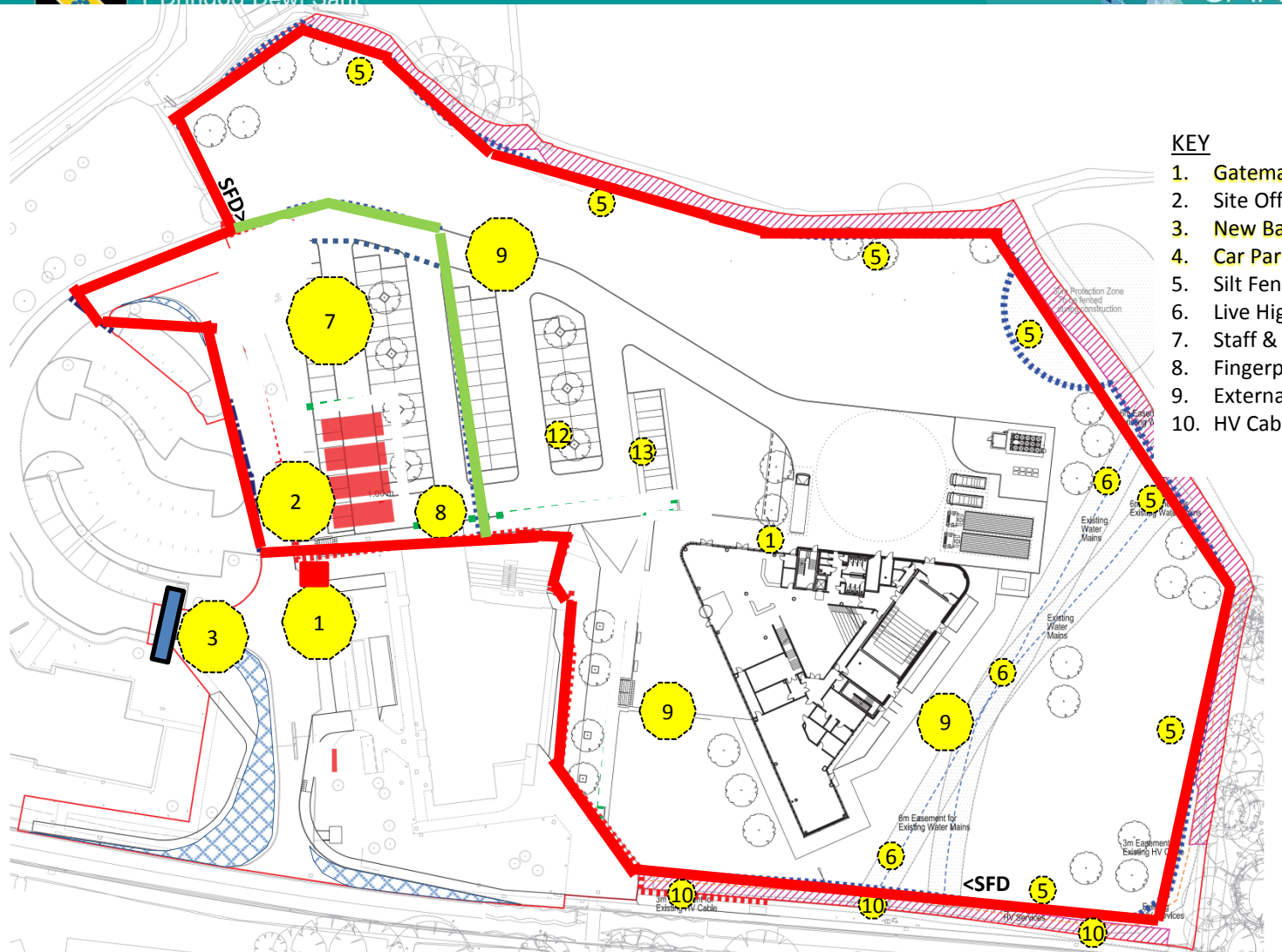
- Prosiect yn agos at hanner ffordd trwy'r contract, wythnos 28 allan o 67 erbyn heddiw
- Mae'r prosiect ar amser ac wedi cynnwys dyluniad cymhleth am estyll concrit wedi'u rhag-gastio. Roedd dros 50% o'r Unedau yn unigryw o ran siâp gan helpu i roi'r siâp unigryw i'r adeilad.
- Targed i gwblhau'r gwaith allanol a'r Maes Parcio'n gynnar yn caniatáu canolbwyntio ar yr adeiladu yn ystod y camau olaf a hefyd yn rhoi maes parcio ar y safle i ni yn ystod y cyfnod adeiladu.
- The project is currently in week 28 of 67 and nearing the halfway stage of the contract
- The project is currently on programme having incorporated an intricate precast concrete plank design into the build here at Yr Egin. Over 50% of the Units were bespoke which all assisted in giving us the Unique Shape Building we have here.
- Targeted early completion of external works and Car Park early as it not only allowed us to concentrate on the build during the latter stages but it also gave us site car parking during the construction phase of the contract

LLUNIAD LOGISTEG / LOGISTICS DRAWING



Prifysgol Cymru
Y Drindod Dewi Sant

CANOLFAN
TECHNOLÓGIAETH
S4C



KEY

1. Gateman Hut & Main Entrance
2. Site Offices & Welfare
3. New Barrier Position
4. Car Park
5. Silt Fence and Soakaway
6. Live High Pressure 250mm Water Main
7. Staff & Contractor Parking
8. Fingerprint Turnstile Access to Site
9. External Materials Storage
10. HV Cable With 3m Easement

*Creu dyfodol newydd i'r iaith a'r economi yng Nghymru
Creating a new future for the language and economy in Wales*

www.ydds.ac.uk | www.uwtsd.ac.uk





Animeiddiad Hedfan3D / 3D Flythrough BDP

<http://bim.bdp.net/bristol/yregin/vtour/>

Rhaglen y Prosiect – Dyddiadau Allweddol

Project Programme – Key Dates

Cerrig Milltir /Project Milestone	Dyddiad i'w gyflawni / Date to be achieved
Dechrau ar y Safle / Start on Site	Mawrth 14eg 2017 / 14th March 2017
Trafodaethau gyda thenantiaid a datblygu'r cynnig masnachol / Tenant negotiations and development of commercial offer	Mawrth / March 2017 – Mawrth / March 2018
Cynllunio trefn digwyddiadau / Planning of event schedule	Mawrth / March 2017 – Mawrth / March 2018
Mynediad i Denantiaid / Tenant Access	Mai - Mehefin 2018 / May - June 2018
Prosiect wedi'i gwblhau / Project complete	Gorffennaf 2018 / July 2018



CANOLFAN
YR EGIN

S4C

CWESTIYNAU QUESTIONS

