

Building the Future: Delivering the Wales we want

28th June 2017

Llandudno

**ADEILADU
ARBENIGRWYDD**
Clwb Gogledd Cymru



**CONSTRUCTING
EXCELLENCE**
North Wales Club



Comisiynydd
**Cenedlaethau'r
Dyfodol**
Cymru

**Future
Generations**
Commissioner
for Wales

**ADEILADU
ARBENIGRWYDD**
YNG NGHYMRU



**CONSTRUCTING
EXCELLENCE**
IN WALES



Milica Kitson

Chief Executive

Constructing Excellence in Wales

**ADEILADU
ARBENIGRWYDD**
Clwb Gogledd Cymru



**CONSTRUCTING
EXCELLENCE**
North Wales Club



Comisiynydd
**Cenedlaethau'r
Dyfodol**
Cymru

**Future
Generations**
Commissioner
for Wales

**ADEILADU
ARBENIGRWYDD**
YNG NGHYSRU



**CONSTRUCTING
EXCELLENCE**
IN WALES



Chris Davies

Chair

North Wales Best Practice Club

**ADEILADU
ARBENIGRWYDD**
Clwb Gogledd Cymru



**CONSTRUCTING
EXCELLENCE**
North Wales Club



Comisiynydd
**Cenedlaethau'r
Dyfodol**
Cymru

**Future
Generations**
Commissioner
for Wales

**ADEILADU
ARBENIGRWYDD**
YNG NGHMYMRU



**CONSTRUCTING
EXCELLENCE**
IN WALES



Sophie Howe

Future Generations Commissioner for Wales

**ADEILADU
ARBENIGRWYDD**
Clwb Gogledd Cymru



**CONSTRUCTING
EXCELLENCE**
North Wales Club



Comisiynydd
**Cenedlaethau'r
Dyfodol**
Cymru

**Future
Generations**
Commissioner
for Wales

**ADEILADU
ARBENIGRWYDD**
YNG NGHMYMRU



**CONSTRUCTING
EXCELLENCE**
IN WALES





Comisiynydd
**Cenedlaethau'r
Dyfodol**
Cymru

**Future
Generations**
Commissioner
for Wales

**cenedlaethaurdyfodol.cymru
futuregenerations.wales**

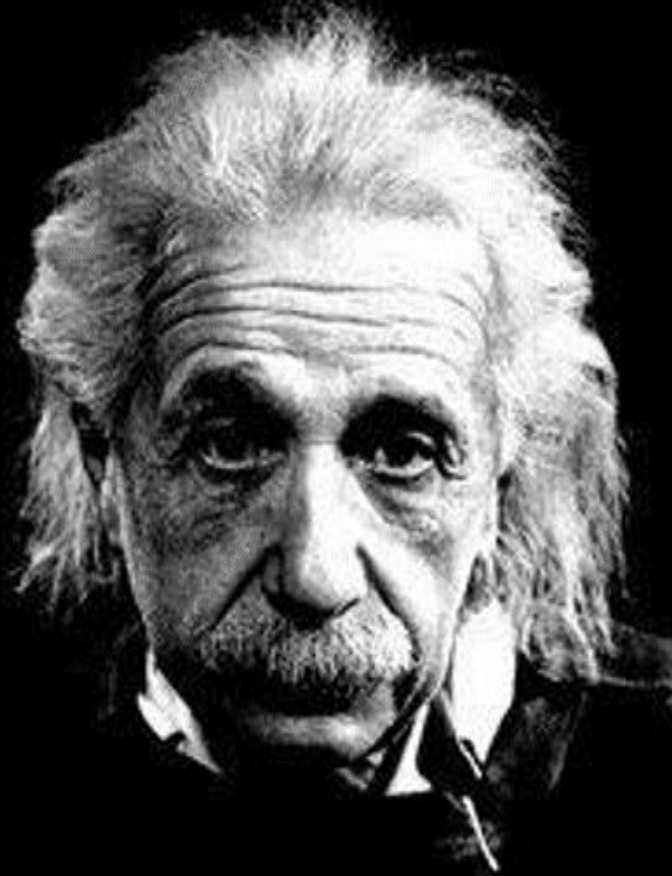


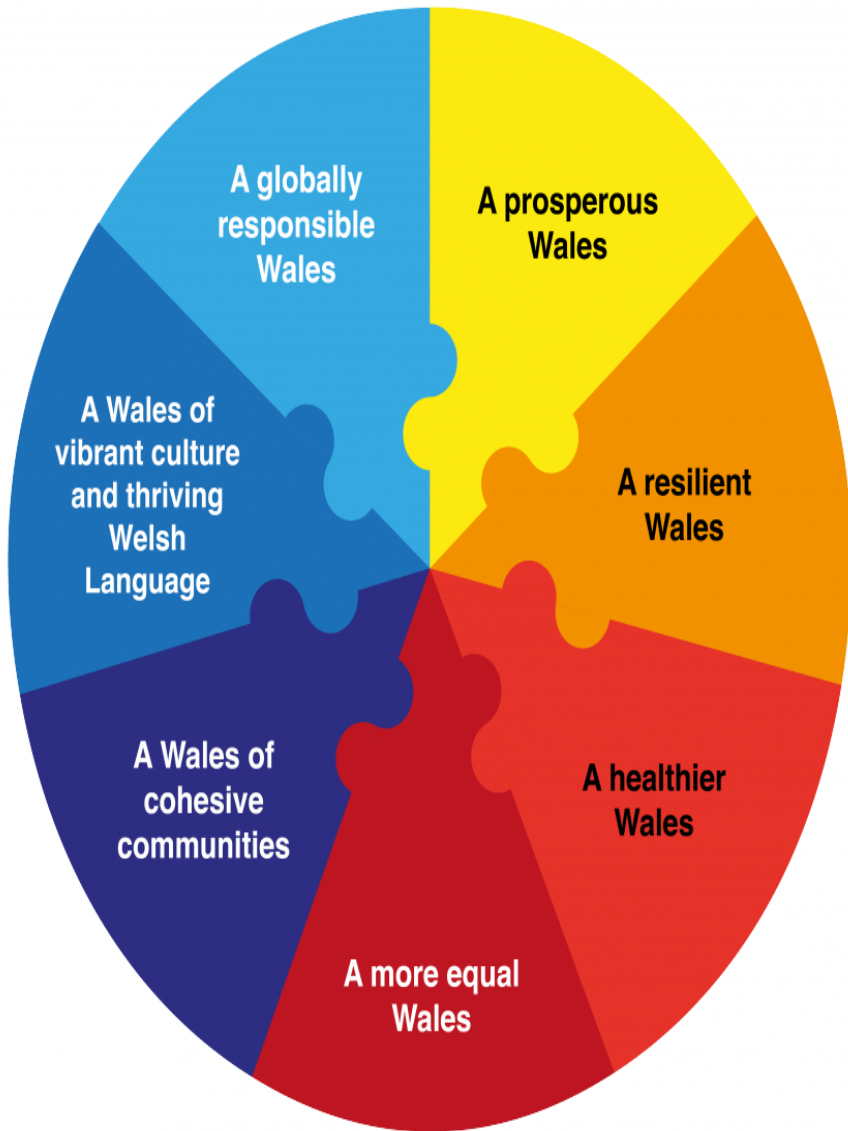
@futuregencymru





“WE CANNOT
SOLVE OUR
PROBLEMS
WITH THE SAME
THINKING WE
USED WHEN WE
CREATED THEM”







Goal	Description of the goal
A prosperous Wales	An innovative, productive and low carbon society which recognises the limits of the global environment and therefore uses resources efficiently and proportionately (including acting on climate change); and which develops a skilled and well-educated population in an economy which generates wealth and provides employment opportunities, allowing people to take advantage of the wealth generated through securing decent work.
A resilient Wales	A nation which maintains and enhances a biodiverse natural environment with healthy functioning ecosystems that support social, economic and ecological resilience and the capacity to adapt to change (for example climate change).
A healthier Wales	A society in which people's physical and mental well-being is maximised and in which choices and behaviours that benefit future health are understood.
A more equal Wales	A society that enables people to fulfil their potential no matter what their background or circumstances (including their socio economic background and circumstances).
A Wales of cohesive communities	Attractive, viable, safe and well-connected communities.
A Wales of vibrant culture and thriving Welsh language	A society that promotes and protects culture, heritage and the Welsh language, and which encourages people to participate in the arts, and sports and recreation.
A globally responsible Wales	A nation which, when doing anything to improve the economic, social, environmental and cultural well-being of Wales, takes account of whether doing such a thing may make a positive contribution to global well-being.

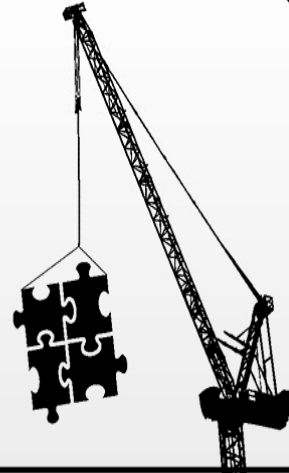


North Wales Construction Framework

Tania Silva

Fframwaith Adeiladu Gogledd Cymru **North Wales Construction Framework**

Adeiladu Cymunedau Gogledd Cymru Gyda'n Gilydd
Building North Wales Communities Together



North Wales Construction Framework

Tania Silva

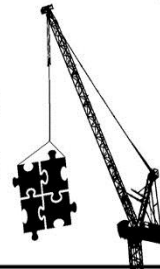
28th June 2017



Balfour Beatty

**Fframwaith Adeiladu Gogledd Cymru
North Wales Construction Framework**

Adeiladu Cymunedau Gogledd Cymru Gyda'n Gilydd
Building North Wales Communities Together



Transparency

Openness

Flexibility

Innovation

Trust

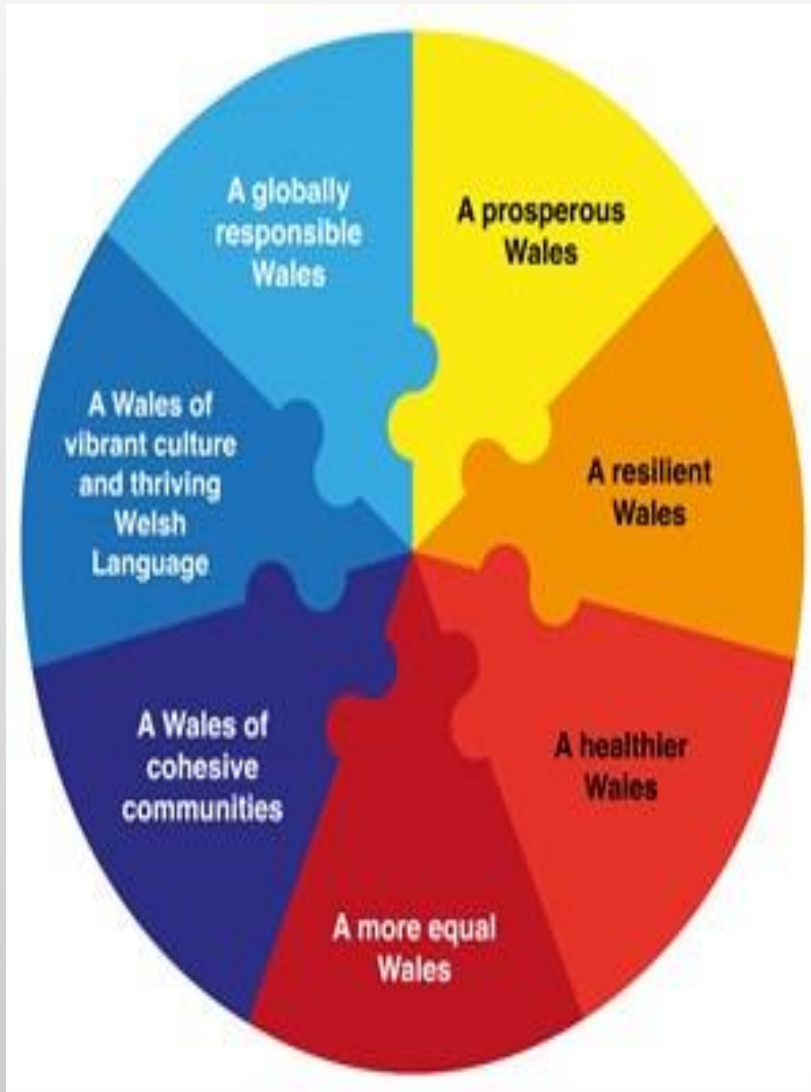
ECI

Collaboration

Integrity

Unity

Well-being Goals



- **Long-term thinking** - balancing short-term needs with safeguards to meet long-term needs.
- **Prevention** - actions to prevent problems getting worse.
- **Integration** - considering how your objectives may impact on those of others.
- **Collaboration** - Working with other bodies (which may include third sector organisations) that can help you meet your goals.
- **Involvement** - involving people and communities with an interest in helping you meet your objectives, and reflecting the diversity of the people in your area.

Our Commitment

- ▶ Fair payment
- ▶ Local recruitment
- ▶ Agreed NSAfC targets for employment & training
- ▶ Established special interest groups with supporting agencies, colleges & training bodies involvement
- ▶ Engagement and development with the supply chain
- ▶ Dissemination of knowledge and best practice through Meet the Buyer events, SIGs & Forums
- ▶ Delivery of meaningful community benefits/social value

NWCF Pipe line of work



- ▶ 4 projects completed
- ▶ 21 projects let and on-going
- ▶ 4 projects still in the pipeline
- ▶ Total Value of framework £235m
- ▶ Total value let over £200m

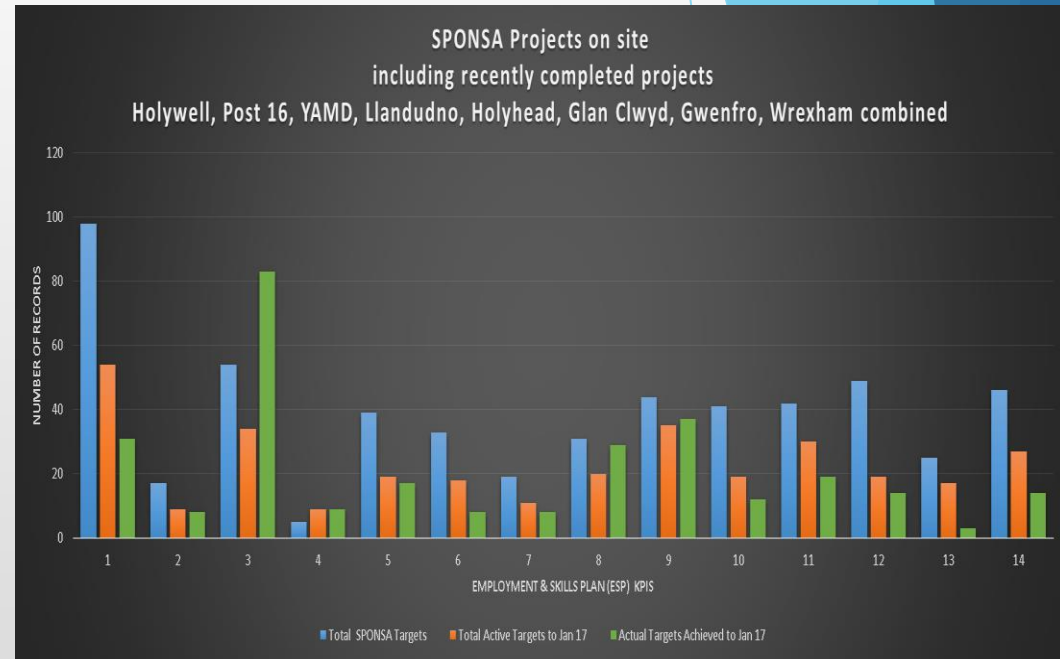


What is working well



Employment & Skills Plan

KPI No.	The number of placements projects propose to deliver during the life of projects (Framework target is 78w per million pound spend)
1	Work Experience Placement (16 plus years)
2	Work Experience Placement (14 - 16 years)
3	Construction Curriculum Support Activities - individual engagement
4	Graduates recruited
5	Apprentice starts
6	Existing Apprentices
7	Apprentice completions
8	Jobs Created on Construction Projects
9	S/NVQ starts for subcontractors
10	S/NVQ completions for subcontractors
11	Training Plans for subcontractors - number
12	Supervisor training for subcontractors
13	Leadership & Management training for subcontractors
14	Advanced Health & Safety training for subcontractors



Collaboration & Integration



Community Benefits

- ▶ 100% Community Benefits
- ▶ 100% Employment Skills Plan



Working with the Princes Trust

The partnership that has been created between Prince's Trust and The North Wales Construction Framework SIG is both unique and hugely important. It bridges Local Authority, many significant local and national construction companies, CITB, local colleges with local communities.



Next Steps

TECHNIQUEST

- ▶ Planning the new generation of Frameworks
 - ▶ Lotting Strategy
 - ▶ Marketing
 - ▶ Review Framework Structure
 - ▶ Incorporate lessons learnt
- ▶ *Building up on an already successful Framework*
- ▶ *Self-sustaining Framework entity*
- ▶ *Standardise approach to procurement*
- ▶ *Delivery of Community Benefits and v*

jobcentreplus



Prince's Trust





Sustainable Construction The Ignite Project

Rebecca Colley-Jones
Ynys Resources Ltd

tel: 01248 714046

mobile: 07766 000467

email: rebecca@ynysresources.co.uk

www.ynysresources.co.uk

Today we will be covering.....



M-Sparc Project

“To create an advanced, relevant and sustainable Science Park to serve the people and economy of North-West Wales, propelling the region into the future and increasing the overall Welsh value proposition.”



90% of businesses based within Incubation survive the “valley of death” compared to 50% of businesses based in generic business units.



ERDF



Llywodraeth Cymru
Welsh Government

Ewrop & Chymru: Buddsoddi yn eich dyfodol
Cronfa Datblygu Rhanbarthol Ewrop

Europe & Wales: Investing in your future
European Regional Development Fund



M SPARC

Cwmni Prifysgol Bangor
A Bangor University Company

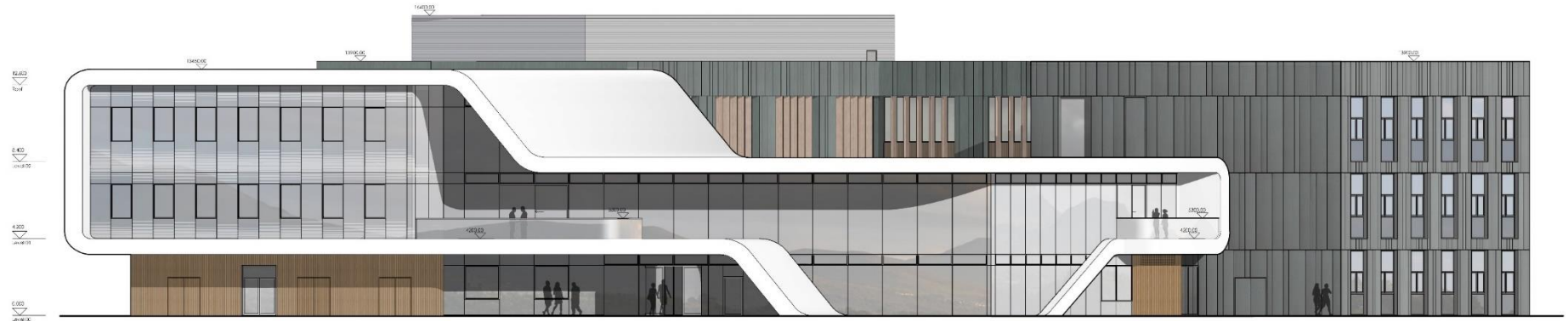


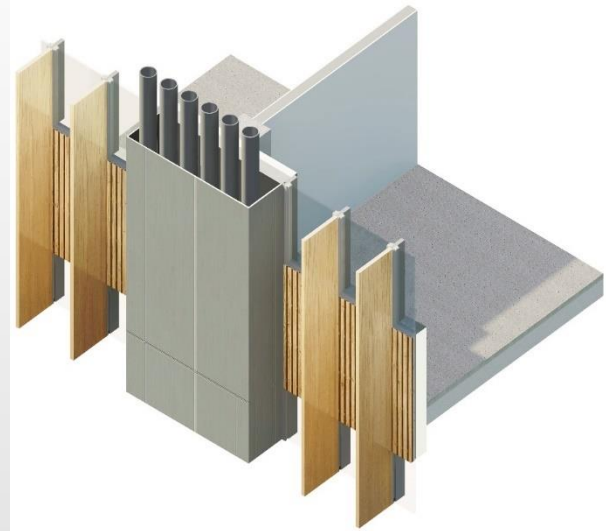








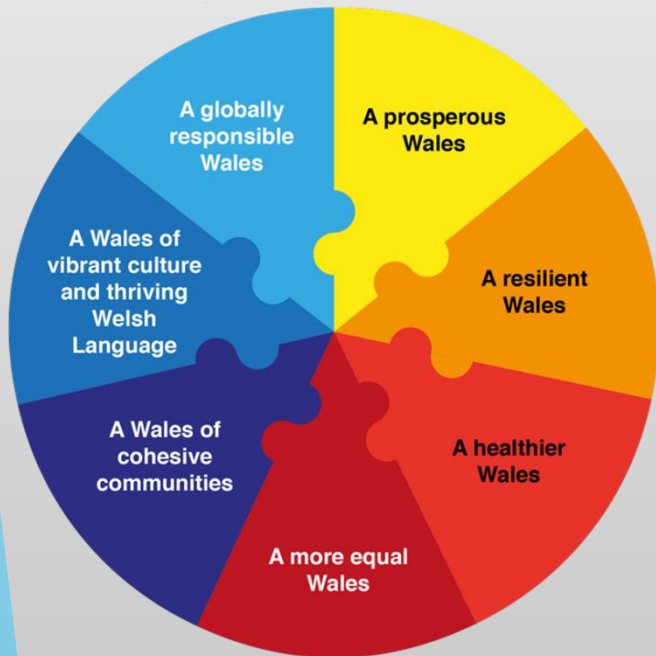




Today we will be covering.....

Well-being of Future Generations (Wales) Act

- The CCT plan developed in conjunction with and mapped against WFG Act
- Clearly demonstrates how actions will impact.



An infographic titled 'Well-being of Future Generations (Wales) Act 2015: The Essentials'. It features the Welsh Government logo and the website 'www.gov.wales'. The infographic is organized into a grid of 21 circular icons, each with a corresponding label: 'Advise, Encourage & Promote', 'Advisory Panel', 'Annual Report', 'Auditor General for Wales', 'Carry out Reviews', 'Collaboration', 'Future Generations Commissioner for Wales', 'Future Generations Report', 'Future Trends Report', 'Integration', 'Involvement', 'Long Term', 'Make Recommendations', 'National indicators & Milestones', 'Prevention', 'Public Services Boards', 'Research', 'Responding to the Future Generations Commissioner', 'Sustainable Development', 'Sustainable Development Principle', 'Transparency', 'Well-being Duty', 'Well-being Goals', and 'Well-being Statement'.



Cwmni Prifysgol Bangor
A Bangor University Company

The Vision



Well-being Act Principles



Long Term



Involvement



Integration



Collaboration



Prevention

Today we will be covering.....

Community Benefits

- Delivery of Community Benefits essential
- Buy in of contractor into the plan
- Plan developed with the contractor
- Regular progress meetings around Community Benefits



Cwmni Prifysgol Bangor
A Bangor University Company

Today we will be covering.....



Cross Cutting Themes

- M-SParc developed CCT from the outset
- Delivery of CCT has been a key outcome for the project
- M-SParc team all buy in and contribute to the delivery of this.
- The project is not about bricks and mortar and CCT delivers some of the change sought/outcomes.



Cwmni Prifysgol Bangor
A Bangor University Company

Today we will be covering.....

Enabling Zero Waste

- Full members of CEW Zero Waste initiative
- CEW Visits to site assisted with development of ZW ideas
- M-SParc will look to use re-cycled/up-cycled office furniture as part of the fit out
- Tanio arts project deliver a key educational aspect.



Cwmni Prifysgol Bangor
A Bangor University Company

Today we will be covering.....

Tanio

A collaborative project between artists, scientists, construction workers and young people where worlds collide and the outcomes are showcased in the National Eisteddfod on Anglesey in 2017 and on the Menai Science Park for generations to come.



TANIO 

"One of the strongest motives that lead men to art and science is escape from everyday life with its painful crudity and hopeless dreariness, from the fetters of one's own ever-shifting desires." A. Einstein

Note: We're also pretty sure that Albert also supported Women in Science!



Cwmni Prifysgol Bangor
A Bangor University Company

Today we will be covering.....

Tanio Project



- Art and creativity essential if we are to create a “creative cathedral”
- Researched work of other places such as google and apple.
- Developed art strategy
- Commissioned a team of artists to explore concepts and ideas.
- Tanio a really good way for M-SParc to engage local communities.



Cwmni Prifysgol Bangor
A Bangor University Company

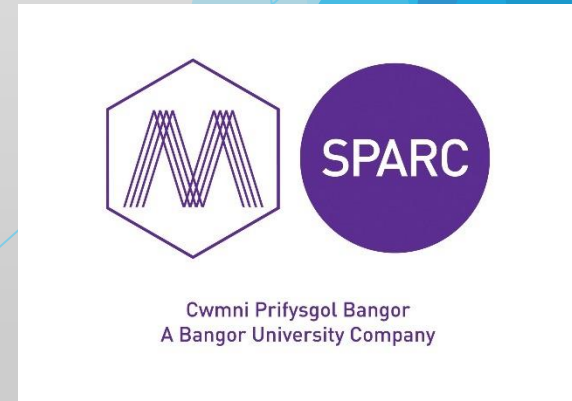
Today we will be covering.....

Ignite



Brief:

This project required an artist to work with the Site Construction Team to identify waste materials and develop innovative and artistic uses for the materials. The artist / project lead will work with a local school to consider issues involved in construction and waste in general as part of the commission.



Today we will be covering.....

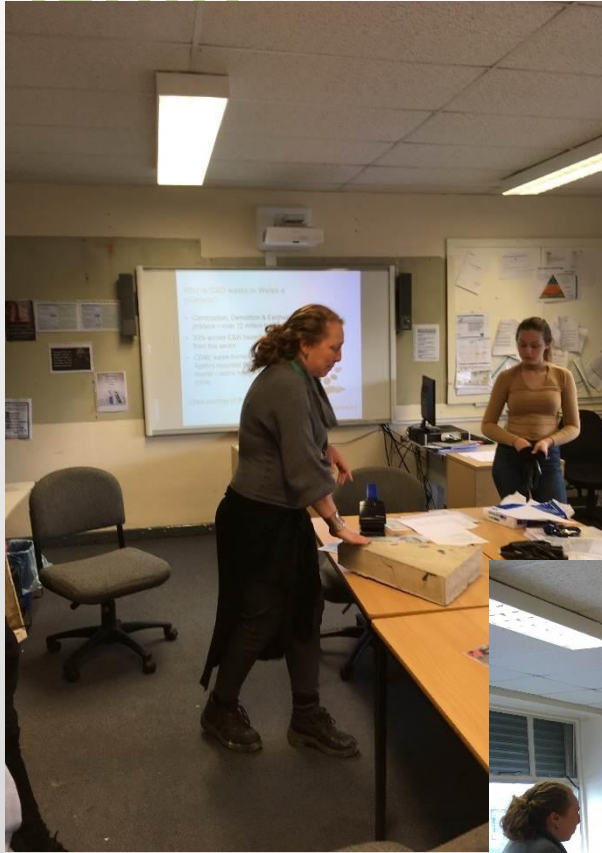
Ionite



Cwmni Prifysgol Bangor
A Bangor University Company

Today we will be covering.....

Ionite



Cwmni Prifysgol Bangor
A Bangor University Company

Today we will be covering.....

Ignite



Today we will be covering.....

Levite



Cwmni Prifysgol Bangor
A Bangor University Company

Today we will be covering.....

The Vision

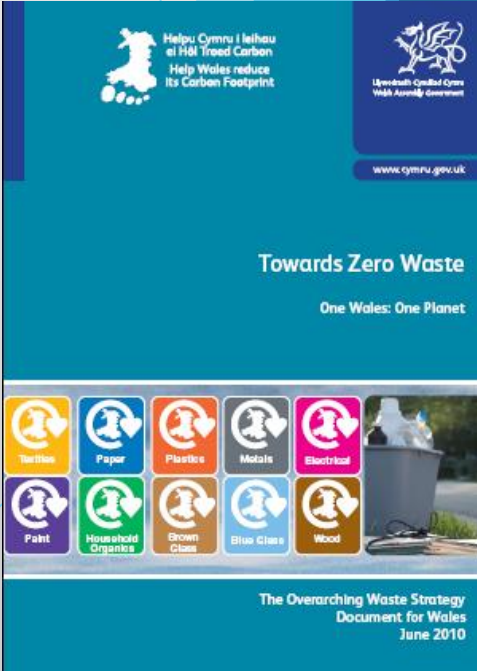
2010



2025



2050



Helpu Cymru i Ielhau
at Hŏl Troad Carbon
Help Wales reduce
its Carbon Footprint

Llywodraeth Cymru Cymru
Welsh Assembly Government

www.cymru.gov.uk

Towards Zero Waste

One Wales: One Planet

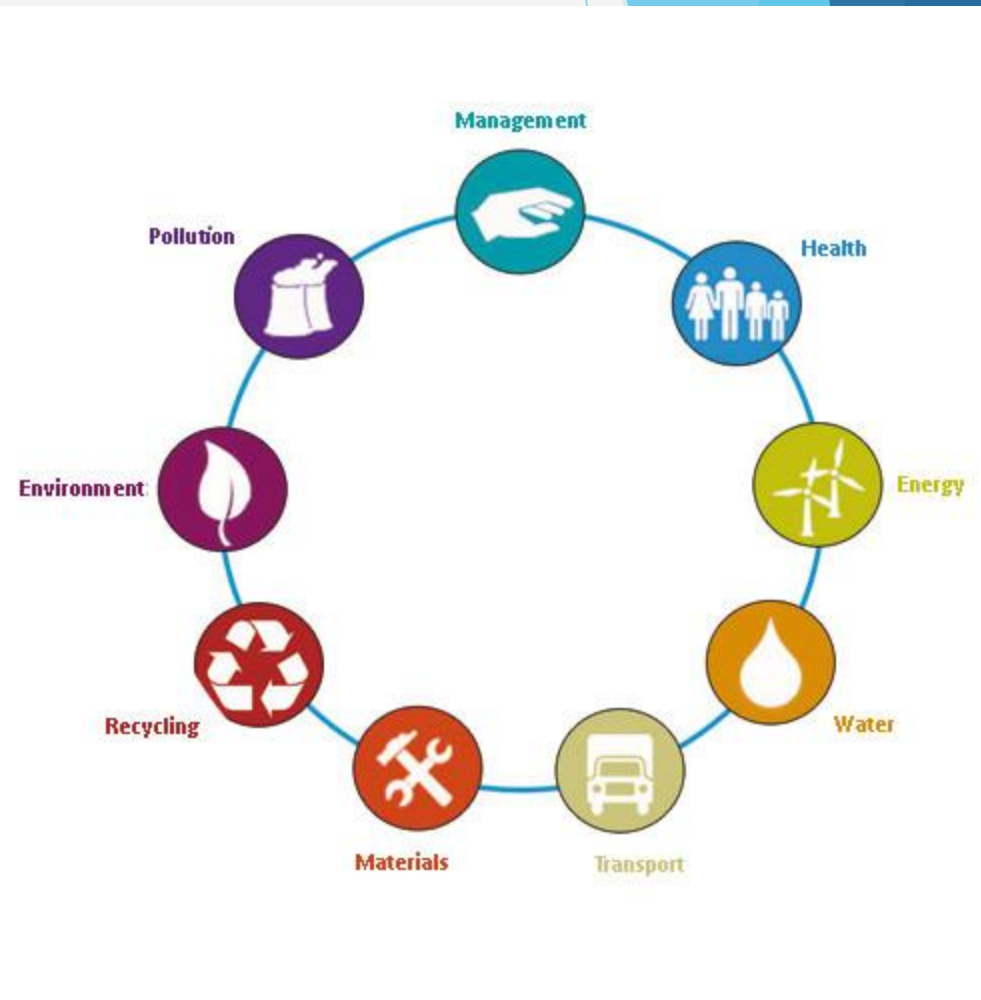
Terrace	Paper	Plastig	Metals	Electrical
Paint	Household Organics	Brown Glass	Blue Glass	Wood

The Overarching Waste Strategy
Document for Wales
June 2010

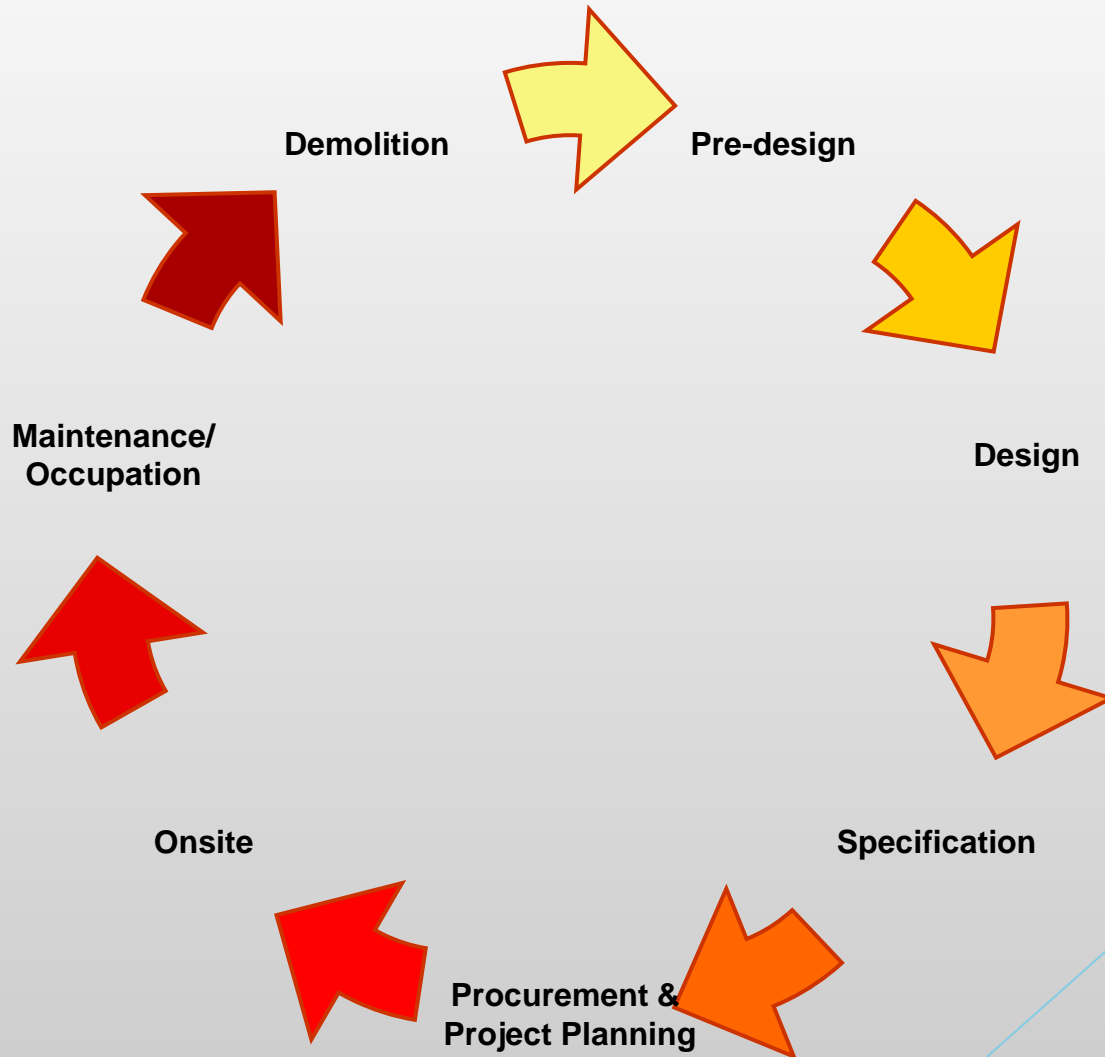
The Code for a Sustainable Built Environment

The Code provides a balanced approach minimising impacts on the global and local environment; and maximising the following:

- resource efficiency
- health, wellbeing, comfort, safety and security of users and others
- social and cultural value
- opportunities for effective and efficient use of facilities
- direct and indirect economic benefits



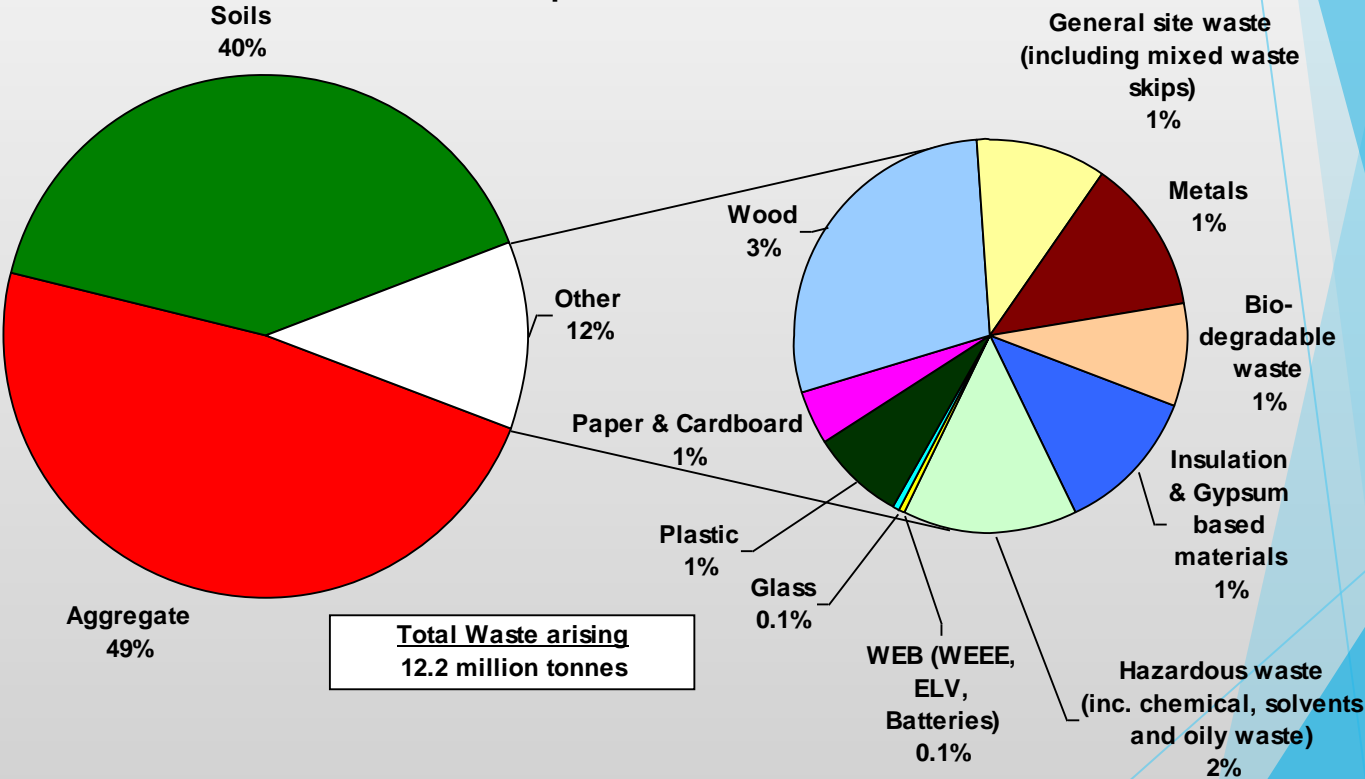
The Construction Cycle



EA C&D waste survey report



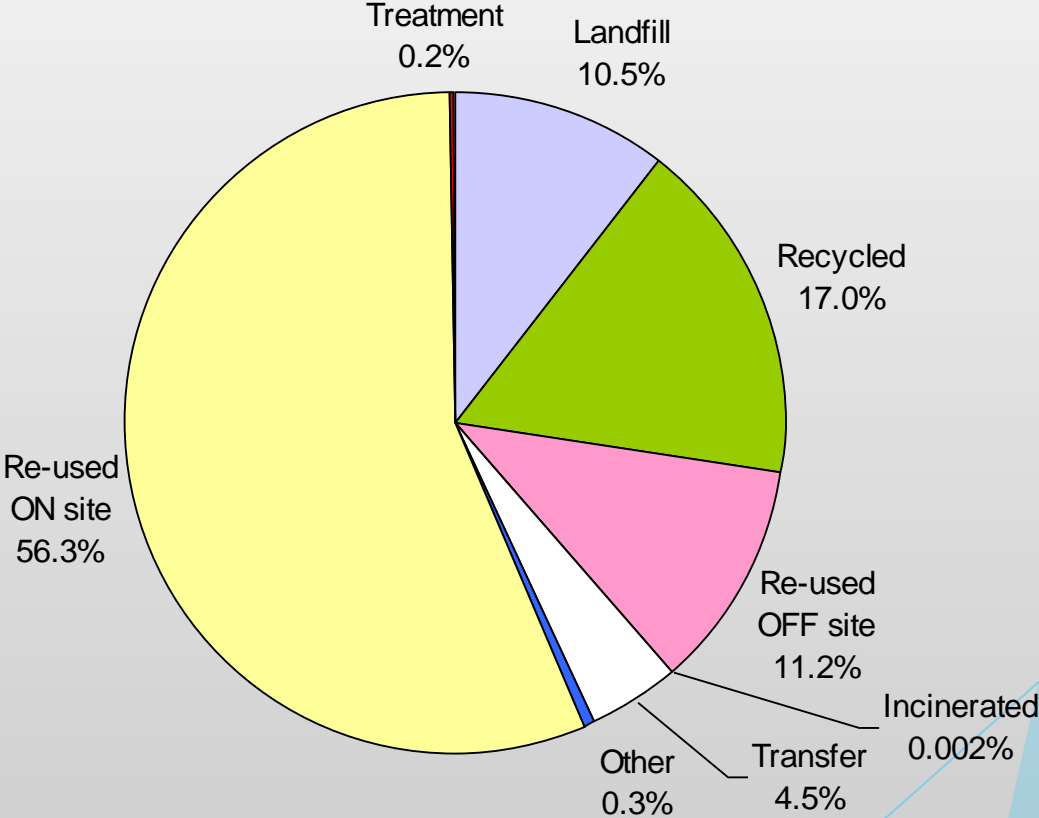
**EA Wales C&D waste survey -
composition of C&D waste**



EA C&D waste survey report

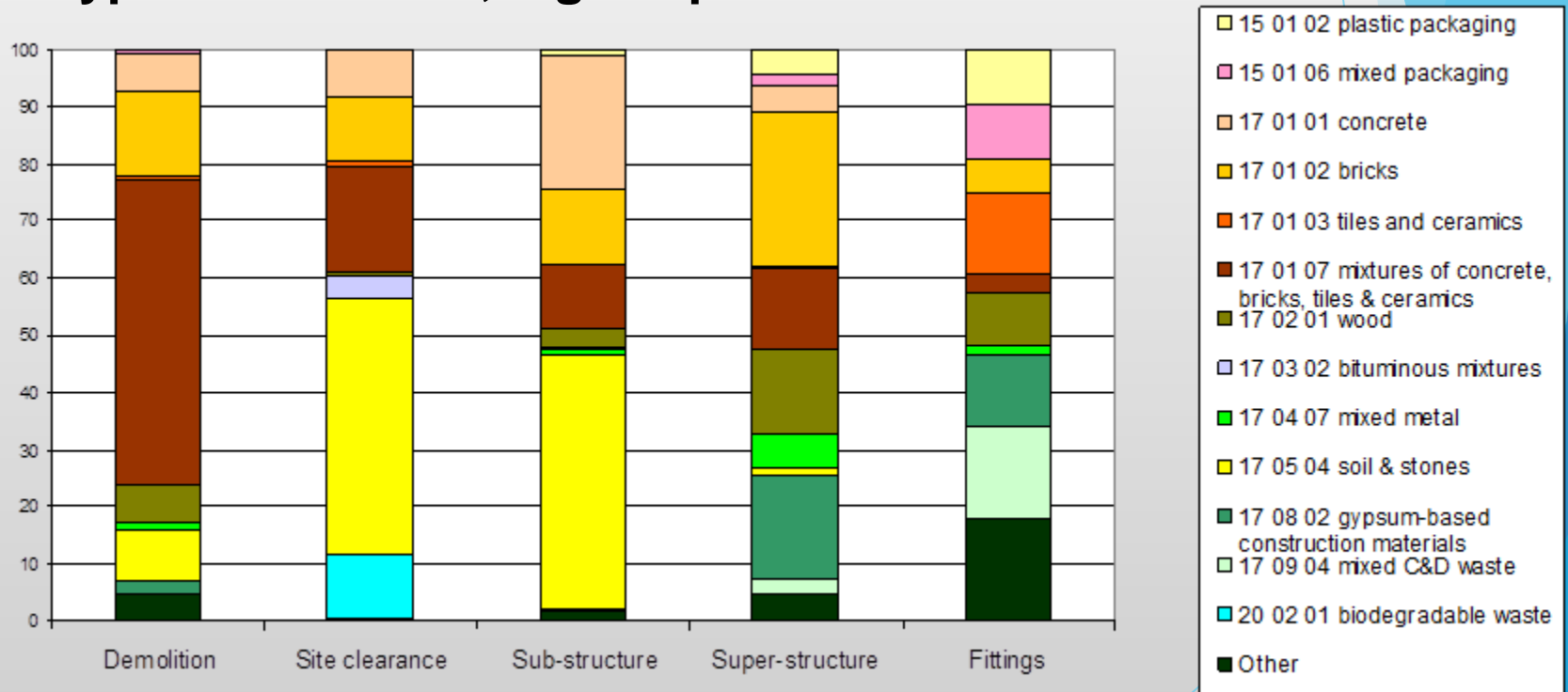


EA Wales C&D waste survey - waste management option used



EA C&D waste survey report

Composition of waste by phase of construction development in a typical container, e.g. skip



Hidden costs of construction waste

FOR AN 8 CUBIC YARD SKIP:

Skip hire	£ 180
Labour to fill skip	163
Cost of materials to fill skip	1,095
Total Cost	<u>£1,438</u>

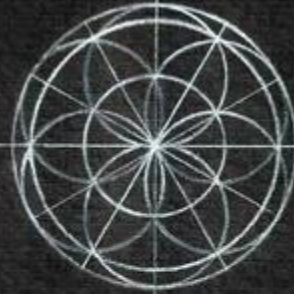
(source: Envirowise/Amec)



Ways to improve resource efficiency



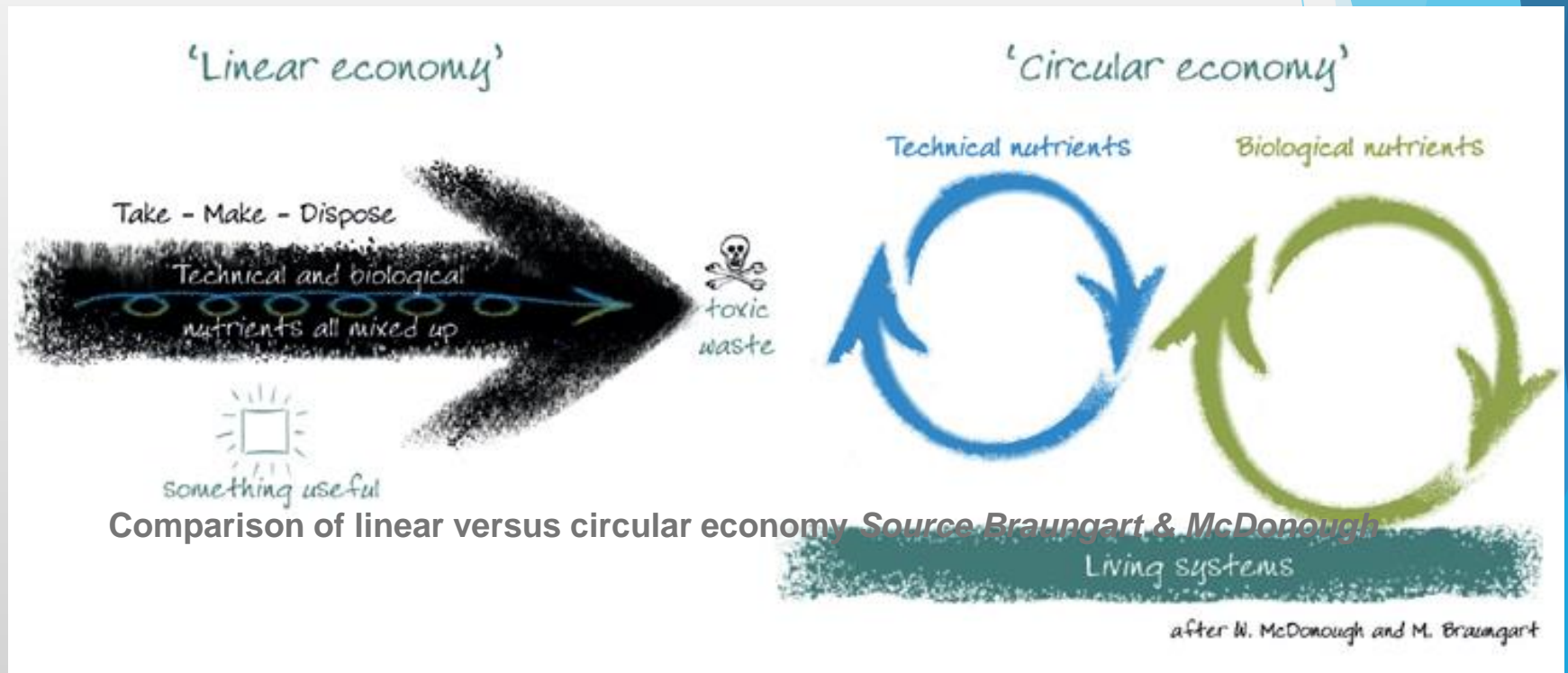
A Circular Future



"Learn how to see. Realize that everything connects to everything else."

Leonardo da Vinci

Why do we need to think about construction differently?



Plas Newydd - Case Study



Marine Centre Wales - Case Study



**“If You want to go quickly
Go alone
If you want to go far
Go together. ”**

African Proverb





Diolch yn fawr :: Thank you
CWESTIYNAU :: QUESTIONS

tel: 01248 714046

mobile: 07766 000467

email: rebecca@ynsresources.co.uk

www.ynsresources.co.uk

Q&A

**ADEILADU
ARBENIGRWYDD**
Clwb Gogledd Cymru



**CONSTRUCTING
EXCELLENCE**
North Wales Club



Comisiynydd
**Cenedlaethau'r
Dyfodol**
Cymru

**Future
Generations**
Commissioner
for Wales

**ADEILADU
ARBENIGRWYDD**
YNG NGHYMURU



**CONSTRUCTING
EXCELLENCE**
IN WALES

