



# Delivering Reuse in Wales

5<sup>th</sup> July 2017

Village Hotel, Swansea



# Geoff Wildman

## Chair

**ADEILADU  
ARBENIGRWYDD**  
Clwb De Orllewin Cymru



**CONSTRUCTING  
EXCELLENCE**  
South West Wales Club



# INSERT ANDY REES PRESENTATION





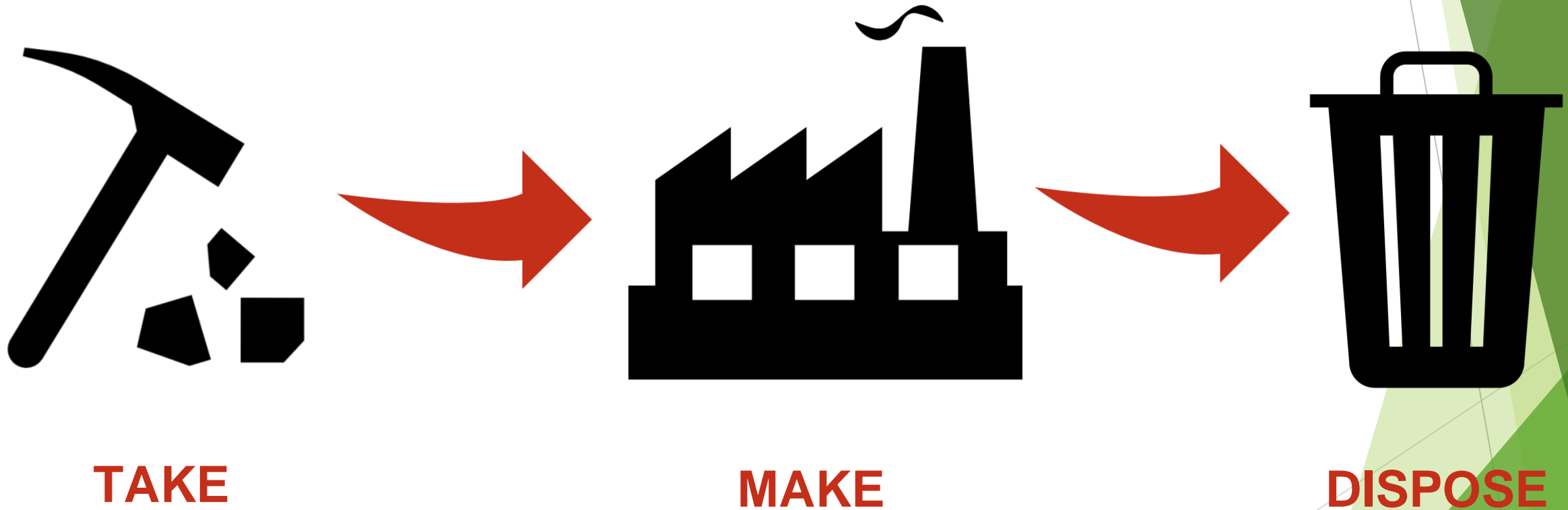


# No Ordinary Flooring Company

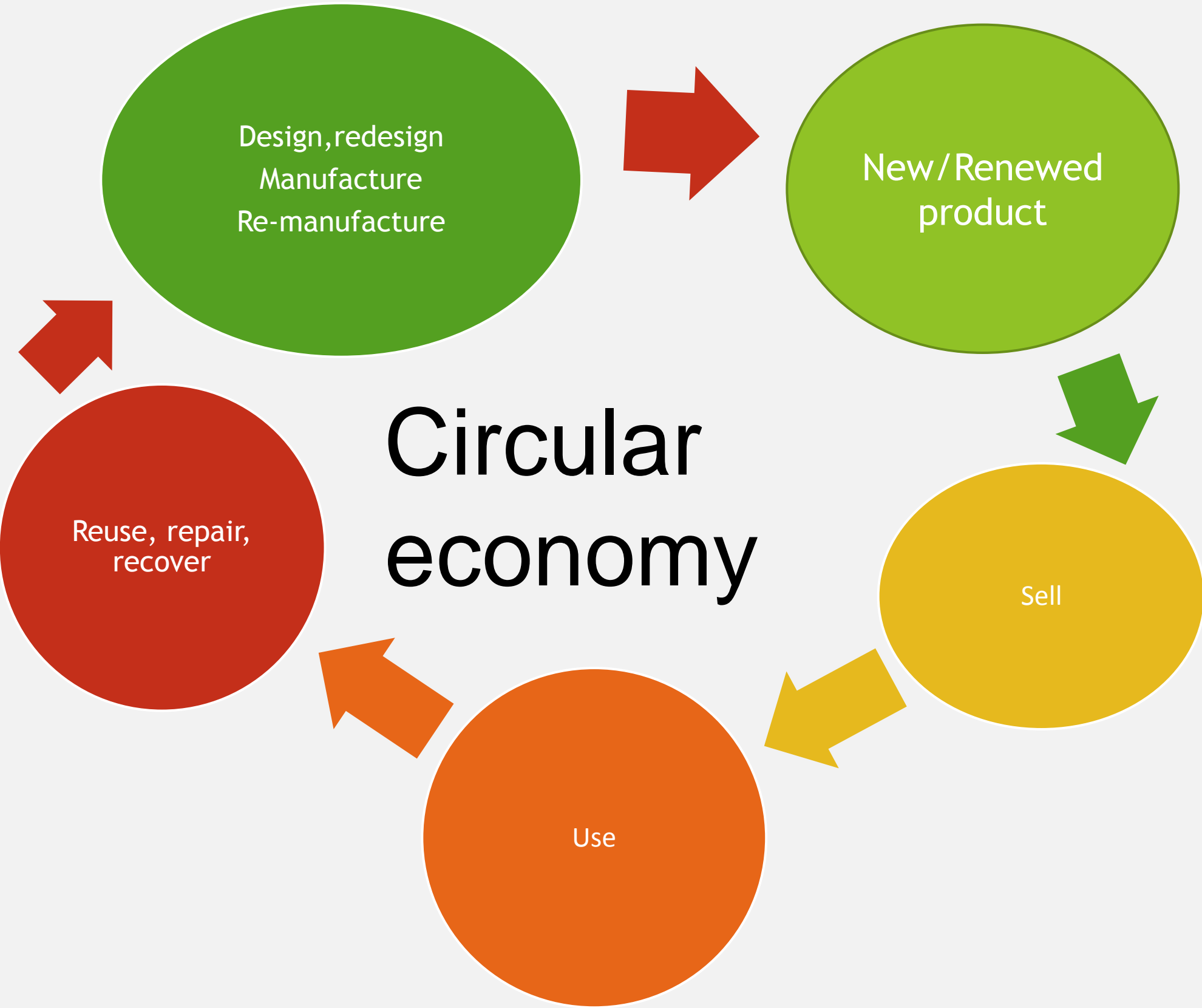


# Linear thinking

## LINEAR ECONOMY



# Time to rethink





# 2013 - 2017 HEADLINES

- **1,8500 TONNES COMMERCIAL CARPET TILES DIVERTED**
- **310,000 m<sup>2</sup> RE-USED / RECYCLED**
- **2640 TONNES EMBEDDED CO<sub>2</sub> SAVED**
- **780 LOW INCOME SOCIAL HOUSING HOUSEHOLDS PROVIDED WITH FREE CARPET**
- **542 WORK PLACEMENTS/OPPORTUNITIES FOR DISADVANTAGED/DISABLED LOCAL RESIDENTS**





## ▶ CIRCULAR/LEAST WASTE



## ▶ SUPPLY & FIT

















A large pile of discarded fabric scraps and textile waste in various colors and textures, including beige, purple, blue, green, and orange. The scraps are of different shapes and sizes, some showing signs of wear and tear. The background is a dense collection of these materials, creating a textured and somewhat chaotic appearance.

400,000

tonnes/yr



**RECYCLE YOUR FLOORING**  
Local, social, environmental



**greenstream**  
**RECYCLING**  
sustainable flooring for a sustainable future

## The Flooring Re-use/ Recycling Scheme

### **WE COLLECT UNWANTED CARPET TILES FROM SITE:**

- ✓ Bitumen or pvc- backed carpet tiles.
- ✓ Tiles taciified not glued to floor.
- ✓ Full tiles palletized and shrunk-wrapped.
- ✓ Offcuts palletized in builders sacks
- ✓ Minimum of 2 pallets/ 200m<sup>2</sup> stacked max height 1.2m from the ground.
- ✓ Dry carpet tiles only, ideally stored inside or minimum tarpaulin covered
- ✓ Pallets available at ground floor access point for 18T vehicle



**WE GUARANTEE NO CARPET TILES ARE LANDFILLED.**

- ✓ Site co-ordination around customer time-scales
- ✓ Full certification for you /your customer
- ✓ Over five years experience of collecting carpet tiles from sites around the UK



**CHAS**  
Accredited Contractor



**greenstream**  
**RECYCLING**

sustainable flooring for a sustainable future

## **CERTIFICATE OF RE-USE/RECYCLING**

**THIS CERTIFIES THAT BETWEEN**  
**June – December 2016**  
**X LTD**

**REUSED/RECYCLED 1900M<sup>2</sup> / 19 PALLETS OF CARPET TILES**

**xxxxaddressxxx**

**Via Greenstream's Carpet Recovery Service.**

**11.4 TONNES OF CARPET TILES DIVERTED FROM LANDFILL**  
**EQUIVALENT TO 112 ROOMS OF AFFORDABLE CARPET FOR LOW INCOME FAMILIES**



**Sustainable Flooring for a Sustainable Future**

waste exemption ref EPR/CE5208AG/A001





**greenstream**

**HOMELIFE**

sustainable flooring for a sustainable future

# AFFORDABLE FLOORING SCHEME



# CONTACT US

No Ordinary  
Flooring Company



**greenstream**  
**FLOORING**

sustainable flooring for a sustainable future

Tel. 01443 683123

[www.findcarpettiles.co.uk](http://www.findcarpettiles.co.uk)

Unit 3 Rheola Industrial Estate

Porth

RCT, CF390AD

# Ministry of Furniture

Ministry of  
**Furniture**  
Education

Ministry of  
**Furniture**  
Workplace

Ministry of  
**Furniture**  
Leisure

Ministry of  
**Furniture**  
Accommodation

Ministry of  
**Furniture**  
Primary

Ministry of  
**Furniture**  
Industries





# Reuse of Asphalt Road Planings; NRW adopted SEPA guidance

**Keith Watts**

**Enabling Zero Waste Project  
Delivery Officer**



# What are Asphalt Road Planings?

Asphalt / Bitumen is used as the binder with an aggregate to produce asphalt concrete.

- Predominate in present-day road construction in the UK
- Bitumen is a refined derivative of crude oil
- Produced in temperature controlled conditions which avoids significant PAH formation
- Milled uncontaminated bituminous asphalt road planings, can be used with the same environmental precautions as virgin material

PAHs (polyaromatic hydrocarbons) are a group of more than 100 different chemicals that are released from burning coal, oil, gasoline, trash, tobacco, wood, or other organic substances.

PAHs have been linked to several cancers

# What are Asphalt Road Planings?

- At the end of a road's life it can be planed by a cold milling machine
  - A rotating milling drum which generates asphalt road planings
- Asphalt road planings are a dense mixture of bitumous binder and mineral aggregate
  - This material would be produced under an exemption from NRW
  - Considered a waste
- Civil engineering uses include:
  - Capping, sub base, basic running surfaces and use as a feedstock in the manufacture of new road surfacing materials
  - Would be subject to waste legislation



# What are NOT Asphalt Road Planings?

Historically tar bound aggregates were used as surfacing material.

- Tar pitches are derived from coal
- Coal tar planings are classed as hazardous waste

Where a road has a tar content it is the responsibility of the road owner/operator to;

- Identify and quantify tar content
- Consider reuse in line with EA Position Statement 075
- Make arrangements for its treatment/disposal at a suitably licensed facility

# What have NRW Adopted?

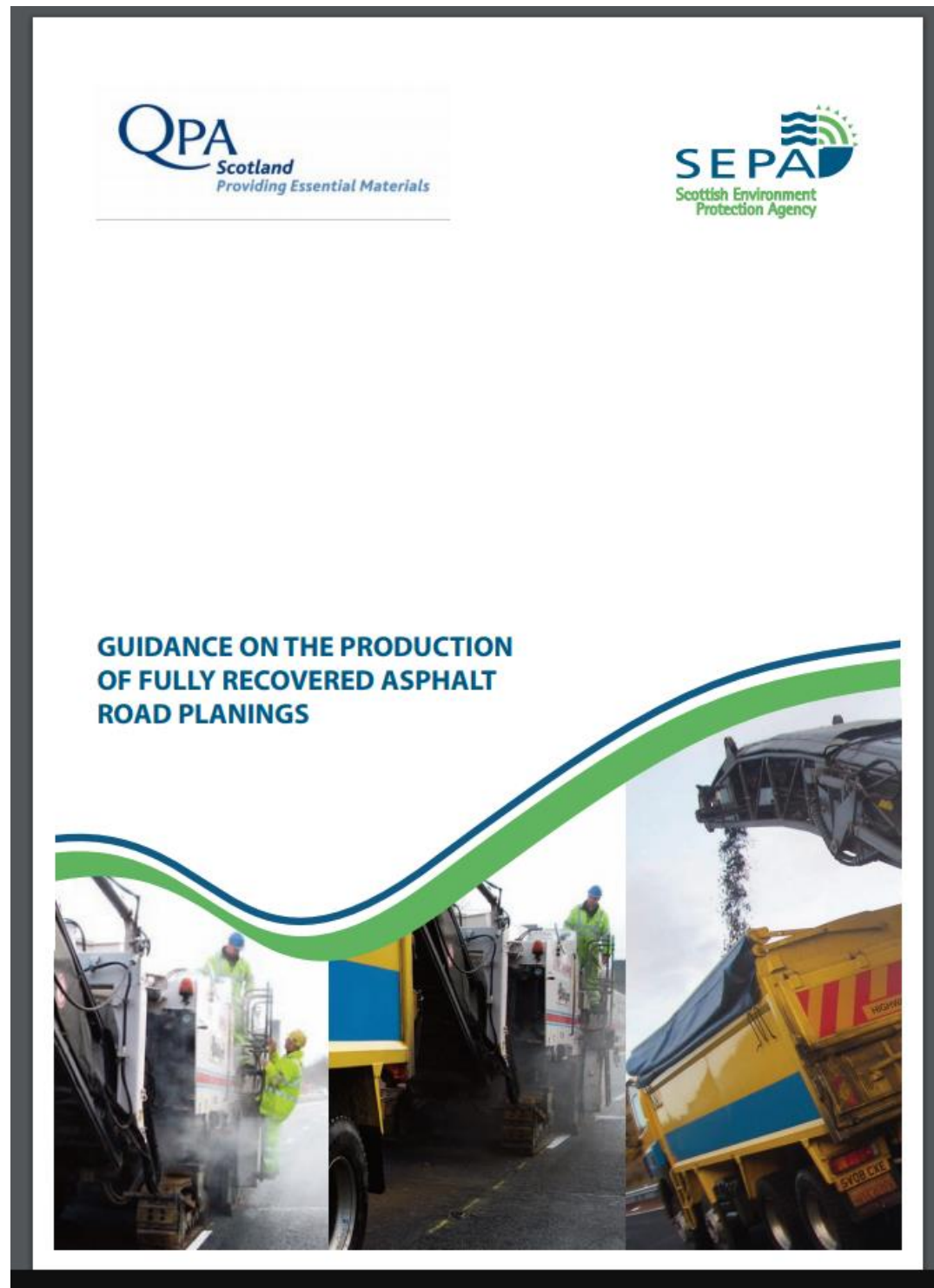
Guidance developed by;

- The Quarry Products Association
- The Scottish Environment Protection Agency (SEPA)

Natural Resources Wales (NRW) has now accepted this guidance

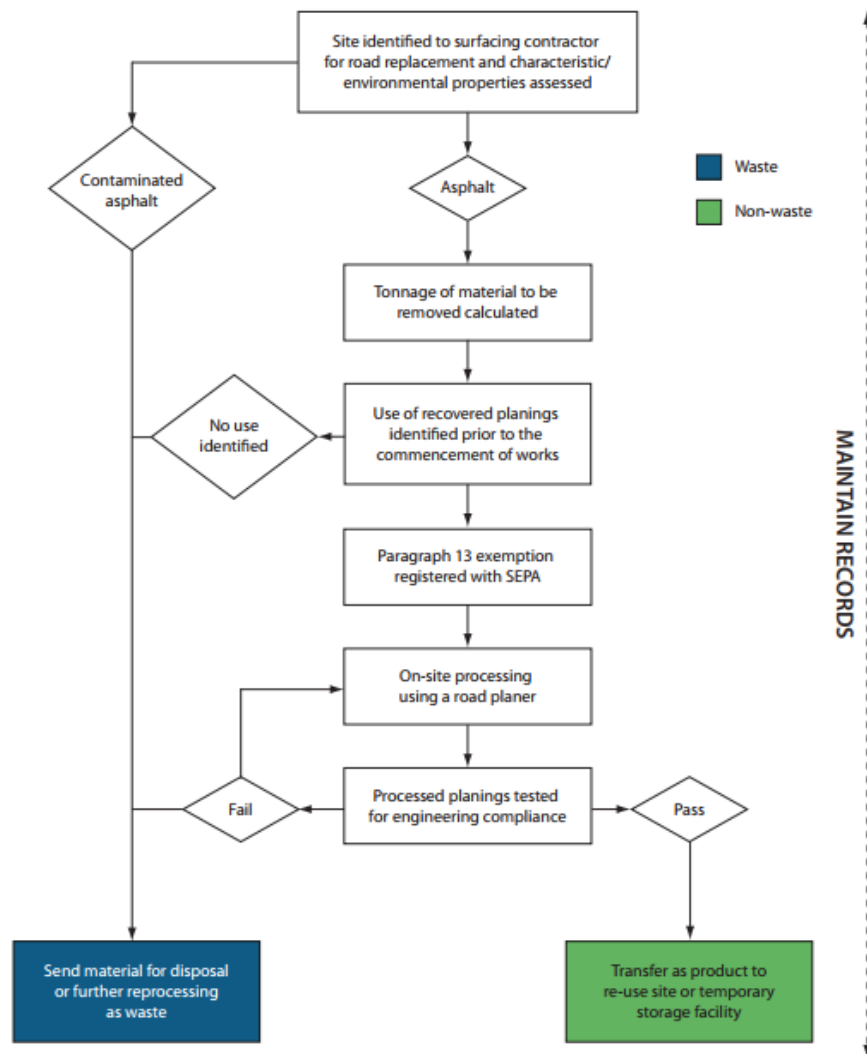
- After a request from the EZW team at CE Wales

Aim to promote the sustainable reuse of asphalt road planings



# Limits

Appendix: Flow chart for on-site processing of failed asphalt road surface



The guidance applies solely to source segregated asphalt road planings covered by European waste Catalogue Code 17 03 02.

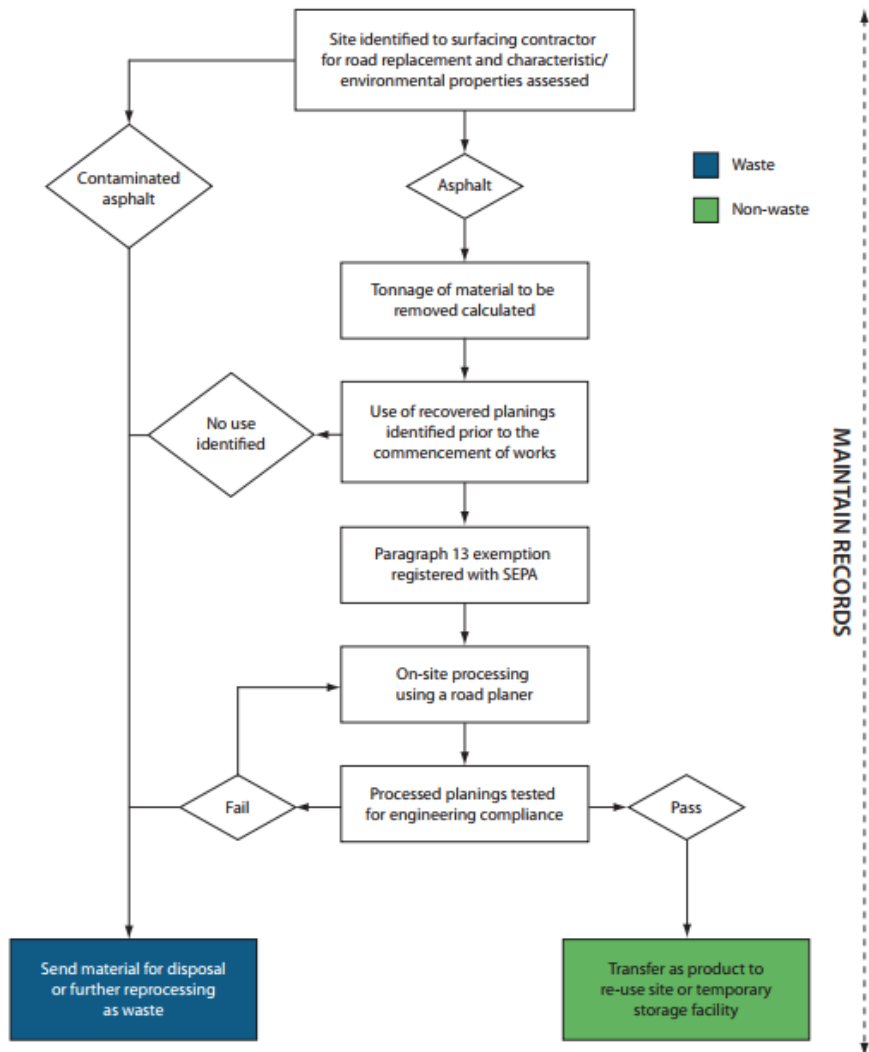
It does not cover:

- Tar bound aggregates.
- Asphalt and asphalt road planings contaminated with, though not restricted to; plastics, glass, metals, and spilled liquids.
- Asphalt removed/processed by any other method other than by a road planer e.g. via pneumatic or hydraulic breakers.



# What does it mean?

Appendix: Flow chart for on-site processing of failed asphalt road surface



Methodology demonstrates when aggregate produced from source segregated asphalt road planings can be considered fully recovered.

Meaning it can be considered a product and ceased to be waste

- no longer subject to waste legislation prior to final use
- e.g. it would not have to be transported by a registered waste carrier or subject to exemptions

## The goal

- Ease the reuse of source segregated asphalt road planings material across Wales
- Boost the available secondary aggregates in Wales
- Reduce the demand for virgin material

# Guidance and Contact Info

Guidance available here;

[https://www.sepa.org.uk/media/154246/road\\_planings\\_guidance.pdf](https://www.sepa.org.uk/media/154246/road_planings_guidance.pdf)

## Contact Information

Keith Watts

**Tel:** +44 (0) 2920 493322

**Mob:** +44 (0) 7823 414 744

**Email:** keith.watts@cewales.org.uk



**ADEILADU  
ARBENIGRWYDD**  
Clwb De Orllewin Cymru



**CONSTRUCTING  
EXCELLENCE**  
South West Wales Club

Q&A



**ADEILADU  
ARBENIGRWYDD**  
Clwb De Orllewin Cymru



**CONSTRUCTING  
EXCELLENCE**  
South West Wales Club

# South West Wales Best Practice Club

## AGM

