

**ADEILADU
ARBENIGRWYDD**
YNG NGHYMRU



**CONSTRUCTING
EXCELLENCE**
IN WALES

Saving lives and money
by implementing the
CLOCS National Standard



CLOCS

Construction
Logistics and
Community Safety

www.CLOCS.org.uk

Derek Rees

Project Director, CLOCS
Chief Executive, SECBE



Content

1. Why bother
2. Quick overview of CLOCS
3. National strategy
4. Taking action to help yourselves and others
5. Anything missing?




CLOCS

Clients: Take ownership of road safety in your supply chains


FORS
FLEET OPERATOR
RECOGNITION SCHEME

Operators: Demonstrate compliance to CLOCS through FORS



Your business?

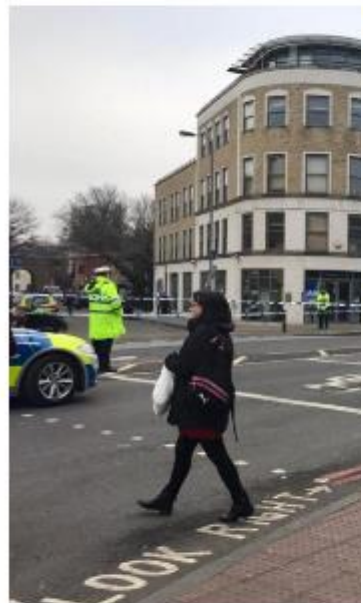
Your colleague?

Your family?

News > London

Battersea crash: Man dies after being hit by lorry in south London horror crash

TOM POWELL | Thursday 26 January 2017 11:58 GMT



Scene: the crash took place at the junction of Battersea

A man has died after being struck down underneath a lorry in south London.

Paramedics fought to save the pedestrian, i

News > London

Limehouse crash: Man die hit by lorry in east London

MARK CHANDLER | 8 days ago



Crash: A man has died after being hit by a lorry @uberukdriver

A man has died after being hit by a lorry in east London during the morning rush hour.

The pedestrian was struck just before 9.15am on Monday in Commercial Road, near the junction with Caroline Street, Limehouse.

News > London

Silvertown crash: Third cyclist killed on London's roads this week after crash with lorry

SAPHORA SMITH | 4 days ago



Crash: Cyclist dead after a collision with a lorry Jay Stewart

A third cyclist has been killed on the street space of just four days.

The rider, a man aged in his early 30s, died after lorry in east London's Docklands at about 1.30pm police said.

Emergency services raced to the crash on Nord about 1.30pm on Thursday.

News > London

Euston crash: Female pedestrian seriously injured after being hit by lorry

TOM POWELL | 4 days ago



Scene: Hampstead Road was closed following t

A woman is seriously injured after busy road in Euston.



- Home
- ★ News
- 📷 Images & Videos
- 👤 Contacts
- 📄 Documents




UPDATE: Woman dies following collision, NW1

News • Feb 10, 2017 17:40 GMT

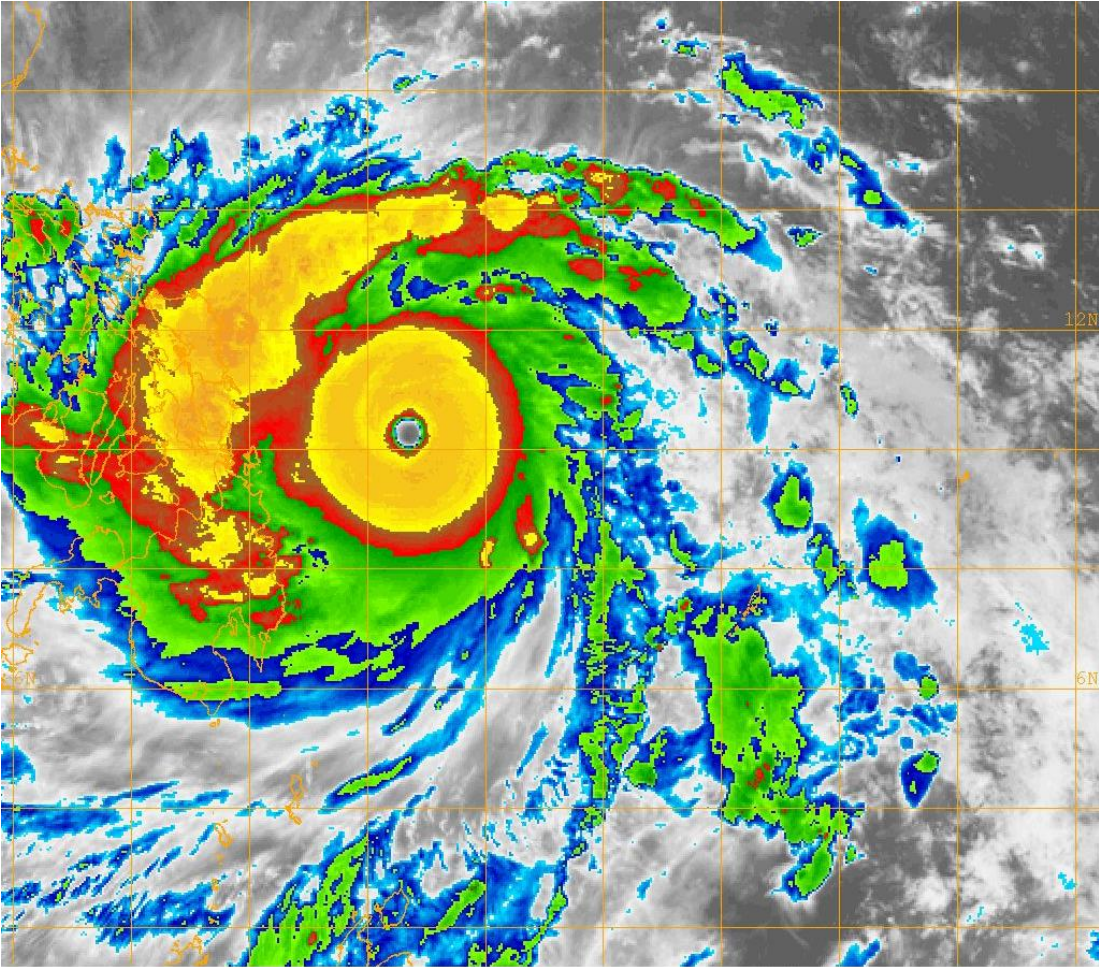


The victim of a road traffic collision in Camden has died.

Summary of 2013-15 VRU KSIs involving HGVs

								Total	Population	KSI/year/ million population
		each year	share							
East Midlands		13.7	34%	8.3	21%	18.0	45%	40	4,533,222	8.82
Eastern		17.0	36%	10.7	22%	20.0	42%	48	5,846,965	8.15
London		40.7	49%	22.0	27%	19.7	24%	82	8,173,941	10.07
North East		7.3	43%	5.0	29%	4.7	27%	17	2,596,886	6.55
North West		22.0	40%	16.3	30%	16.0	29%	54	7,052,177	7.70
South East		34.0	37%	23.7	26%	34.0	37%	92	8,634,750	10.62
South West		15.7	33%	11.7	24%	20.7	43%	48	5,288,935	9.08
West Midlands		18.7	51%	9.3	25%	8.7	24%	37	5,601,847	6.55
Yorkshire/Humberside		15.7	37%	11.7	28%	15.0	35%	42	5,283,733	8.01
Wales		7.3	42%	3.3	19%	6.7	38%	17	3,063,456	5.66
		192	40%	122	25%	163	35%	477	56,075,912	

There's trouble ahead



- Government policy to tackle emissions, congestion & obesity
- Population = More homes & infrastructure = more HGVs
- $x5 \text{ VRUs} + x2 \text{ HGVs} = x10 \text{ KSIs??} = 4,770/\text{annum??}$

Vehicle choice, drivers, routing and more....



How can we implement change?



In order to change the vehicles on the road we need to:

- Procure only safe contractors & subcontractors
- Improve site conditions & set up
- Assess & communicate site conditions to inform vehicle choice
- Ensure only safe companies run or service our projects



Background



HGVs represent less than **4%** of the miles driven in London

Work related road safety was not seen as important as on-site health and safety



78% of cyclist fatalities in 2015 involved an HGV

In 2013 there were **11** different industry standards



20% of pedestrian fatalities in 2015 involved an HGV

85% of industry want one common standard

CLOCS
Standard for construction logistics

Managing work related road risk



Looking out for vulnerable road users

This is the CLOCS Community.....

Contractors

Clients

5,000+ sites
in scope

Looking out
for vulnerable
road users

Regulatory bodies

+430 corporate
champions -
Up 60% since
last April

Vehicle manufacturers

Communicators

Logistic operators

VolkerWessels UK

ISG

mace

LAING O'Rourke

KANSKA

WILLMOTT DIXON
SINCE 1852

Crossrail

Tideway

CITY OF LONDON

MORGAN SINDALL

Network Rail

Taylor Wimpey

British Land

hs
engine for growth

Berkeley Group

Lend Lease

LandSecurities

ARGENT

Thames Water

Westfield

Department for Transport

Transport for London

Camden

VOLVO

MAN

RENAULT

IVECO

CONSIDERATE CONSTRUCTORS

AVIVA

FTA

pteg
The voice of urban transport

LONDON CYCLING CAMPAIGN

The General
Industry of England
and Wales

BRITISH SAFETY COUNCIL

towergate insurance

CPA
Construction

iosh

ice

RHA

mpa
MEMBERSHIP OF PROFESSIONS
AND ASSOCIATIONS

FORS
FORUM OF ROAD SAFETY

BUILDUK
Leading the Construction Industry

secbe
leaders in construction

Abaco
Insurance Brokers

SMMT
DRIVING THE MOTOR INDUSTRY

RoadPeace

O'DONOVAN
WASTE EXPERTS

CEMEX

SIG

MCGEE

DAY
GROUP LTD

POWERDAY
Innovative - Recycling - Solutions

CONWAY
your work our goal

Hanson
HEIDELBERGCEMENT Group

Travis Perkins

See me Save me



Clients:

Take ownership of road safety in supply chains

Clients / principal contractors

- Construction Logistics Plan
- Site suitability
- Site access & egress
- Loading/unloading
- Traffic routing
- Control of site traffic
- Supply chain compliance

Operators:

Demonstrate compliance to CLOCS

Vehicle operators

- FORS or equivalent
- Right vehicles/safety equipment
- Driving licence checks
- Additional driver training
- Traffic routing
- Collision reporting
- Sub-contractor compliance

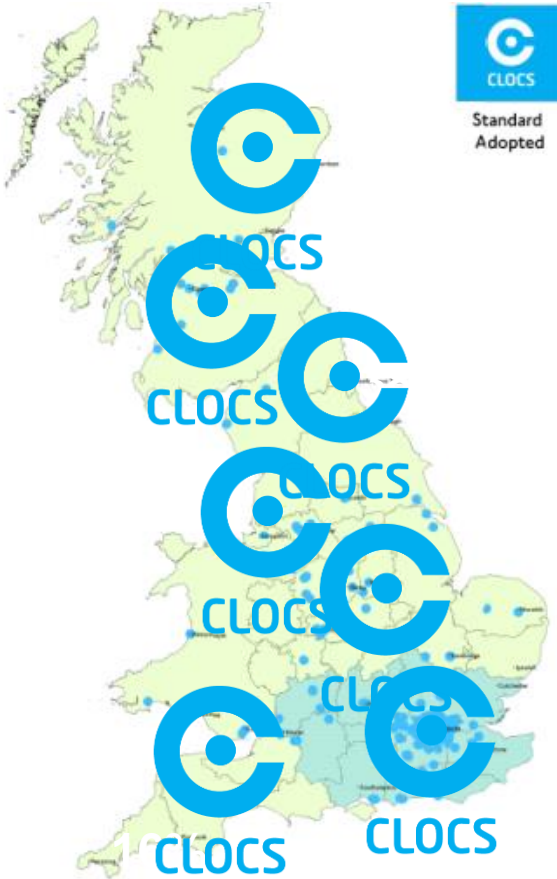


New industry team driving CLOCS adoption & implementation across UK



Emerging national vision for CLOCS

Everywhere



Efficient & safe

	Site checklist
✓	Construction Logistics Plans
✓	Traffic routing & scheduling
✓	Safe vehicles and drivers
✓	Skilled traffic marshals
✓	Gate checks – vehicle & driver compliance
✓	Site access/egress
✓	Good loading/unloading areas

Effective



Walking the talk.....

now every champion has an implementation plan

Construction Logistics Community Safety (CLOCS)

Memorandum of Understanding
Revised January 2017



As a Local Authority, how will you be implementing CLOCS via the planning system?

What mechanism will you be using to require that clients implement CLOCS on developments in your local area?

- _____
- _____

What will the scope be for developing CLOCS? E.g. all developments over x size, from major city / area

- _____
- _____

Will you actively monitor companies they are implementing the CLOCS?

- _____
- _____

Will you have a mechanism to monitor implementation?

- _____
- _____

As a construction client or principal contractor CLOCS Champion, what does your CLOCS implementation plan/journey include?

Typically how many sites could/should implement CLOCS (nearest city or area)?

major city / area

What proportion of the Considerate Constructors Scheme do you already do or will implement?

- Currently 0%
- in 6 months
- in 12 months
- in 18 months

As a vehicle operator CLOCS Champion, what does your CLOCS implementation plan/journey include? It could include:

- FORS Bronze accreditation: now / in 6 months / in 12 months / other _____
- FORS Silver accreditation
Please note: FORS silver accreditation requires meeting FORS silver accreditation criteria
- FORS Gold accreditation
- Equivalent accreditation please specify: _____
- Ensure sub-contractors are accredited
- Share anonymised data
- Other _____

As a Communicator, how will you be promoting CLOCS?

Who will you be targeting? Which target groups?

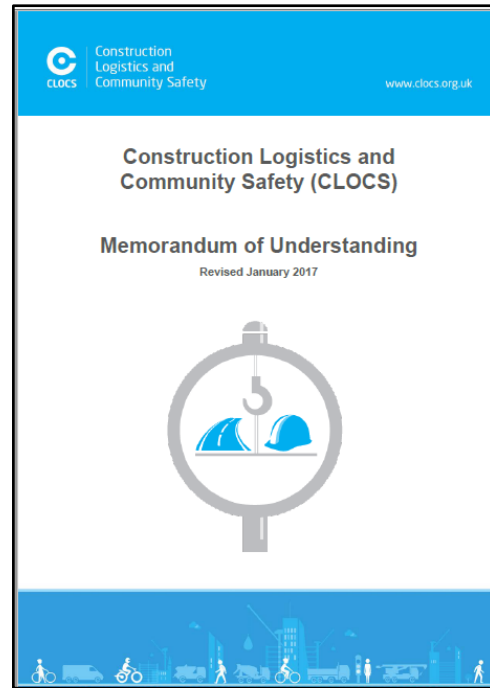
- _____
- _____

How will you be reaching them? e.g. events, newsletters, website, other

- _____
- _____

What headline measures will you use to assess your impact?

- _____
- _____



CLOCS Champion's implementation plan & annual self-assessment

6-monthly site visits by CCS monitors



CLOCS

Assurance model

Reciprocal gate checks – by marshals and drivers alike



360° review – vision for CLOCS driver app

 Construction
Logistics and
Community Safety

In time slot

Holding area

Gate checks

Traffic marshal

Loading area

SUBMIT





Our Vehicles, Our Safety, Our Responsibility

IMPROVING ROAD SAFETY FOR VULNERABLE ROAD USERS



video: <https://www.youtube.com/watch?v=K5Lfz36abbE>

Costs vs benefits?

Costs

- Site teams
- Fleet operators

Direct Vision research video – 5mins
<https://www.youtube.com/watch?v=sZANXmNfmYk>

Benefits

- Protect staff, suppliers and community
- Protect reputation
- Insurance premium reduction
- Win more work

Actions for all

1. Adopt CLOCS National Standard as your standard
2. Communicate internally & externally
 1. ensure understanding & commitment at every level
 2. Key partners and their supply chain
3. Implement on all projects – new sites and existing sites where practicable
4. Get involved in CLOCS development – ensure it becomes even more relevant and helpful to your business to protect your staff, suppliers, community and your reputation
5. Collect and share data and best practice – inform and accelerate industry progress towards zero incidents and accidents from construction traffic

**ADEILADU
ARBENIGRWYDD**
YNG NGHYMRU



**CONSTRUCTING
EXCELLENCE**
IN WALES

Saving lives and money
by implementing the
national CLOCS Standard



CLOCS

Construction
Logistics and
Community Safety

www.CLOCS.org.uk

Derek Rees

Project Director, CLOCS
Chief Executive, SECBE

