

Building the Future: Delivering the Wales we want

Cardiff

29th November 2016

Welcome Rhodri-Gwynn Jones

Chair
Constructing Excellence in Wales

Future
Generations
Commissioner
for Wales

Comisiynydd
Cenedlaethau'r
Dyfodol
Cymru

@futuregencymru

@sophiehowe



@futuregencymru

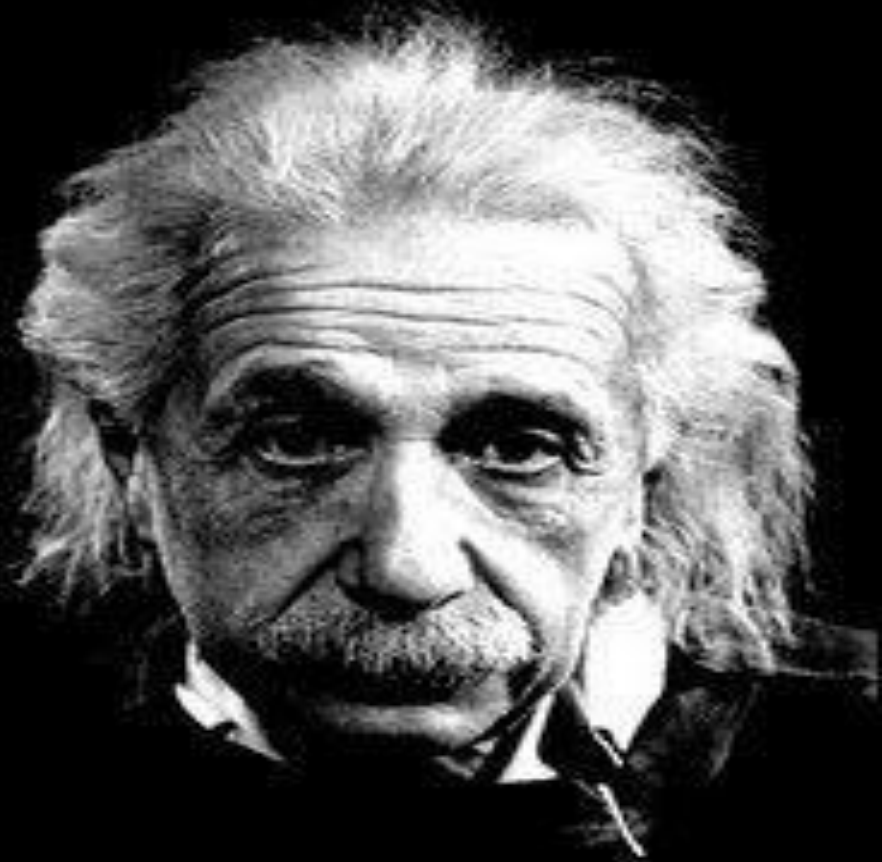
@sophiehowe



@futureagencymru

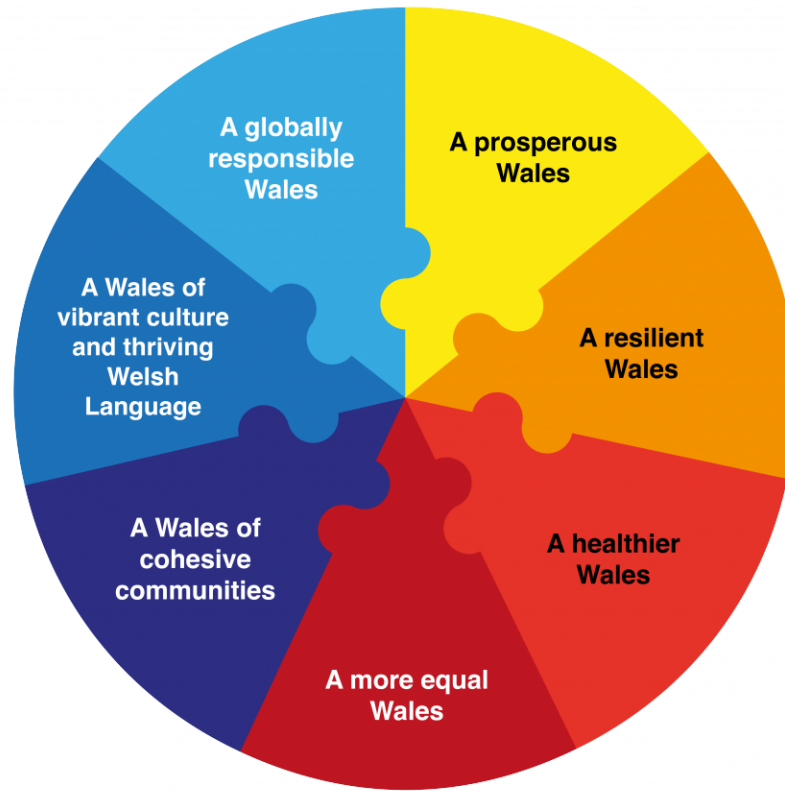
@sophiehowe

“WE CANNOT
SOLVE OUR
PROBLEMS
WITH THE SAME
THINKING WE
USED WHEN WE
CREATED THEM”



@futuregencymru

@sophiehowe



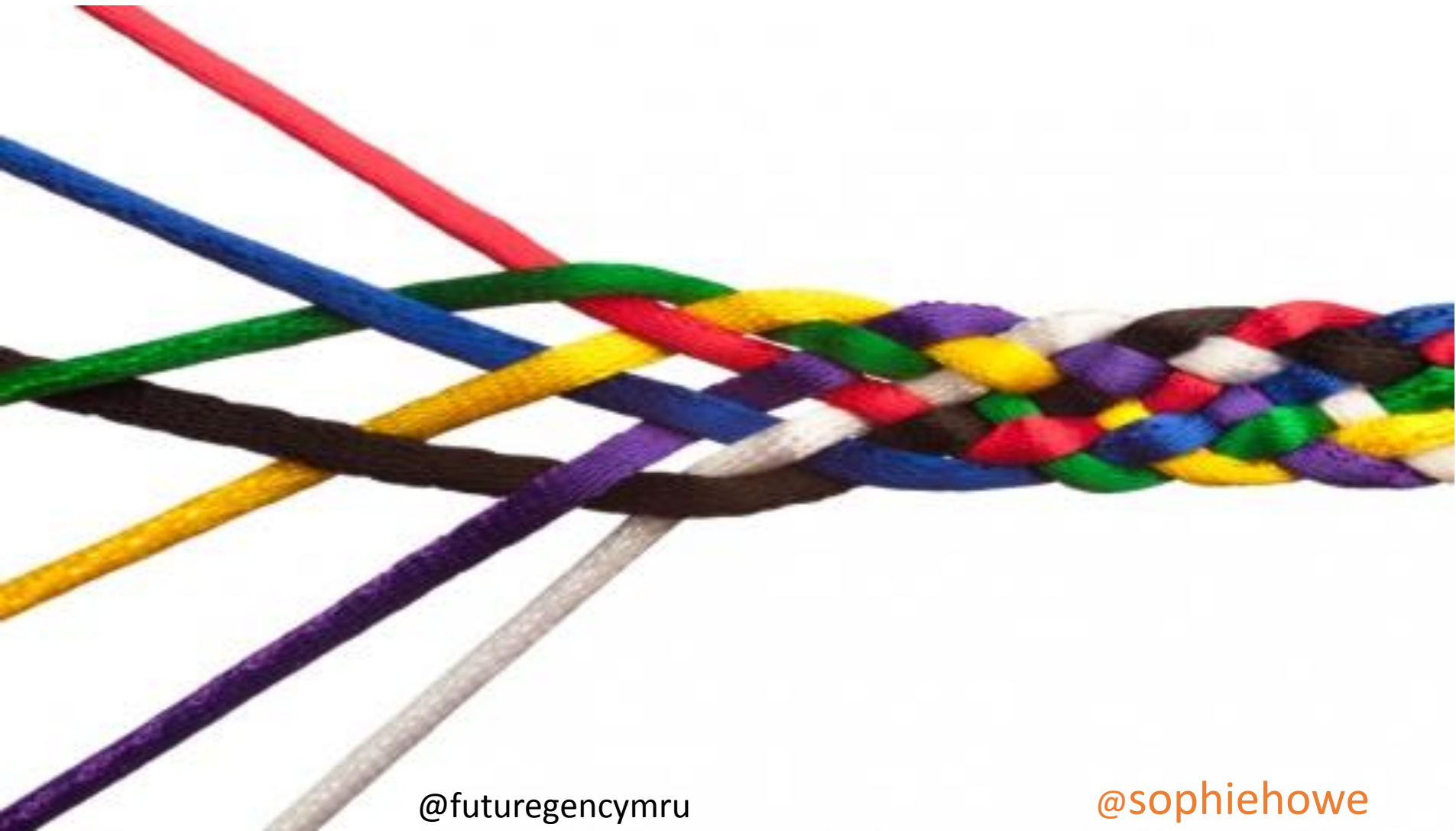
@futureagencymru

@sophiehowe



@futuregencymru

@sophiehowe



@futuregencymru

@sophiehowe



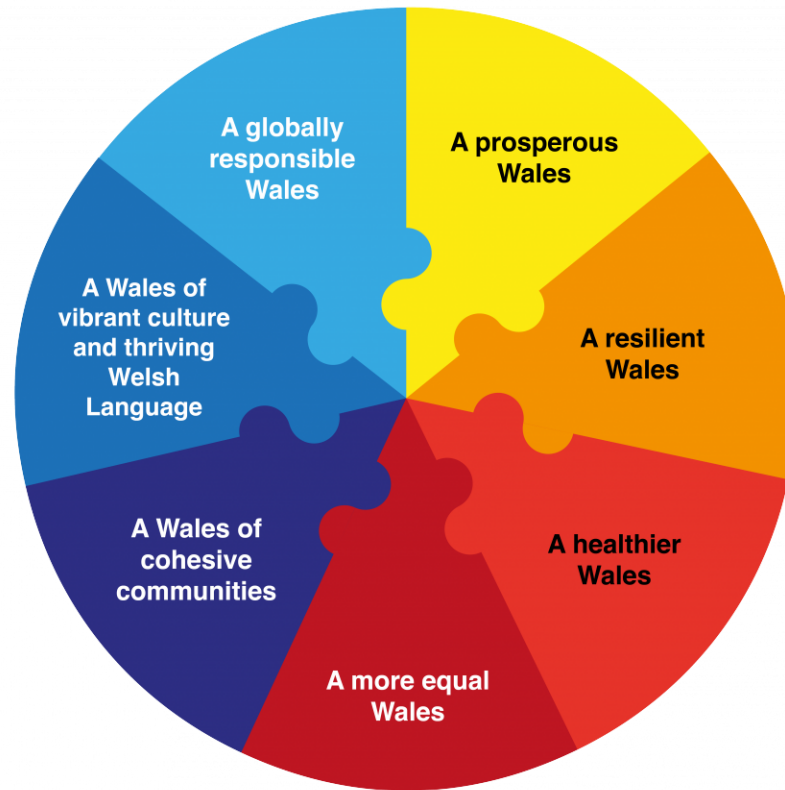
@futuregencymru

@sophiehowe

Goal	Description of the goal
A prosperous Wales	An innovative, productive and low carbon society which recognises the limits of the global environment and therefore uses resources efficiently and proportionately (including acting on climate change); and which develops a skilled and well-educated population in an economy which generates wealth and provides employment opportunities, allowing people to take advantage of the wealth generated through securing decent work.
A resilient Wales	A nation which maintains and enhances a biodiverse natural environment with healthy functioning ecosystems that support social, economic and ecological resilience and the capacity to adapt to change (for example climate change).
A healthier Wales	A society in which people's physical and mental well-being is maximised and in which choices and behaviours that benefit future health are understood.
A more equal Wales	A society that enables people to fulfil their potential no matter what their background or circumstances (including their socio economic background and circumstances).
A Wales of cohesive communities	Attractive, viable, safe and well-connected communities.
A Wales of vibrant culture and thriving Welsh language	A society that promotes and protects culture, heritage and the Welsh language, and which encourages people to participate in the arts, and sports and recreation.
A globally responsible Wales	A nation which, when doing anything to improve the economic, social, environmental and cultural well-being of Wales, takes account of whether doing such a thing may make a positive contribution to global well-being.

@futureagencymru

@sophiehowe



@futureagencymru

@sophiehowe



Taken from 'Co-management of green
infrastructure (CoMGI), a project
supported by the US Embassy in the
Republic of Belarus

@futuregencymru

@sophiehowe



@futuregencymru



@sophiehowe

Q&A Session

Delivering Well-being for Future Generations

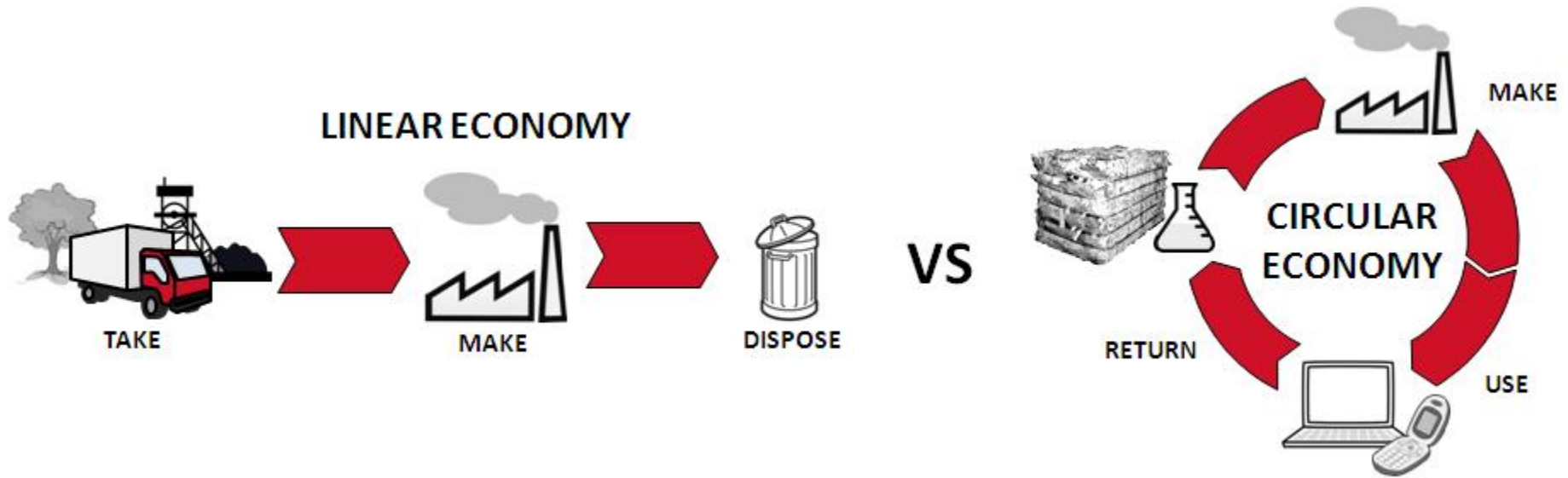


Building the Future

Moving from being less
bad
to being good



An opportunity



Making the transition...



Opportunity: Circular Economy for the Built Environment

Adopting circular economy practices in **construction & built environment sector** in Wales would lead to a level of benefit of the order of **£1bn annually**



*You don't have to do any of
this, survival is not mandatory*

Walter R. Stahel



GIG
CYMRU
NHS
WALES

Iechyd Cyhoeddus
Cymru
Public Health
Wales

Public Health Wales – an Innovative, Collaborative Workspace

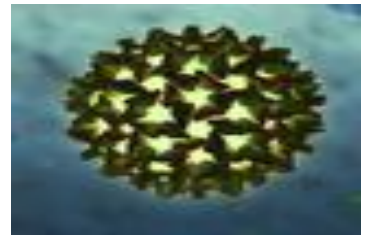


GIG
CYMRU
NHS
WALES

Iechyd Cyhoeddus
Cymru
Public Health
Wales

What do we do?

- **Screening:** breast, bowel, newborn hearing
- Analysing and reporting on microbiological test across most of the NHS in Wales
- **Protection** from infectious outbreaks e.g. hepatitis, ebola



We also



We also collect evidence on a wide range of diseases in order to support future policy

Sally Attwood

Quick Profile

- 1500 staff
- 54 properties across Wales
- £100m annual budget
- Relatively young – formed in 2009
- Half the workforce are in offices



Sally Attwood



May 2015 – selected:
**No 2 Capital
Quarter**

- Move 550 people
- Lease four floors
- 51,000 sq ft

Problems

- Perception of **excess** in the NHS
- Lots of mismatched old furniture
- How to deliver an interior sympathetic to the exterior and fit for purpose
- How to secure **public value**
- How to meet staff expectations
- What to do with all the **old stuff!**

Aspiration

- Fabulous workplace
 - Collaboration
 - Focus
 - Learning
 - Socialisation
- Not at the expense of future generations

How is it made?



Sally Attwood



GIG
CYMRU
NHS
WALES | Iechyd Cyhoeddus
Cymru
Public Health
Wales

Solutions?

- **DIY** - PHW sets up something with a social enterprise and slowly remanufactures its stock in readiness for moving in
- **Test the market** - OJEU process – very painful but revealing

OJEU process Jan – June 2016

Specification:

- Re-use PHW furniture where possible
- Might need nip & tuck or repair
- Bring in secondhand
- Some new kit allowed!



GIG
CYMRU
NHS
WALES

Iechyd Cyhoeddus
Cymru
Public Health
Wales

Consortium

- **Rype Office** – design, office furniture re-manufacture
- **Orangebox** – South Wales business – remanufactured chairs, new collaborative pieces
- **Greenstream** – social enterprise in Porth – new and recycled carpet tiles

Reuse Office

- High quality furniture sourced from existing clients, used markets and manufacturers' surplus stocks
- Remanufactured to present 'as-new' appearance and performance
- Compared to new - cuts costs and reduces carbon footprint
- Tackles waste and creates jobs



GIG
CYMRU
NHS
WALES

Iechyd Cyhoeddus
Cymru
Public Health
Wales

Orangebox

- 1st office chair in Europe to be 'Cradle to Cradle' accredited
- in-house recycling (take back) service
- an Innovate UK supported project looking at adapting the business toward circular economy thinking



GIG
CYMRU
NHS
WALES

Iechyd Cyhoeddus
Cymru
Public Health
Wales

Greenstream Flooring

- aims to provide the least-wasteful, most resource effective options for flooring, including re-use
- supports low-income & long-term unemployed people in area of high social deprivation
- direct benefits in the local community – jobs, carpeting to households



GIG
CYMRU
NHS
WALES

Iechyd Cyhoeddus
Cymru
Public Health
Wales

Some stats

- **2,600** items used for refit
- of which: 1,269 re-made 1053
- re-used
- 277 items – new
- **% split: 40:48:12**



Flooring

- designed to be accessible to all users
- 4015 sqm of carpet tiles used
- 670 sqm re-used
- **every £££** spent means Greenstream can provide free carpeting for households in poverty



GIG
CYMRU
NHS
WALES

Iechyd Cyhoeddus
Cymru
Public Health
Wales

Carbon benefits

By re-using:

- **758** desks/tables – **52.03** tonnes CO2 saved
- **922** chairs – **54.34** tonnes CO2 saved
- **522** pedestals – **20.67** tonnes CO2 saved
- **670**m² re-used carpet – **5.7** tonnes CO2 saved



Waste to Landfill

- 41 tonnes of waste diverted from landfill



GIG
CYMRU
NHS
WALES

Iechyd Cyhoeddus
Cymru
Public Health
Wales

Seeing is believing ...



GIG
CYMRU
NHS
WALES

Iechyd Cyhoeddus
Cymru
Public Health
Wales





Innovation Room



30+ meeting spaces





Come and see us!

Sally.Attwood@wales.nhs.uk

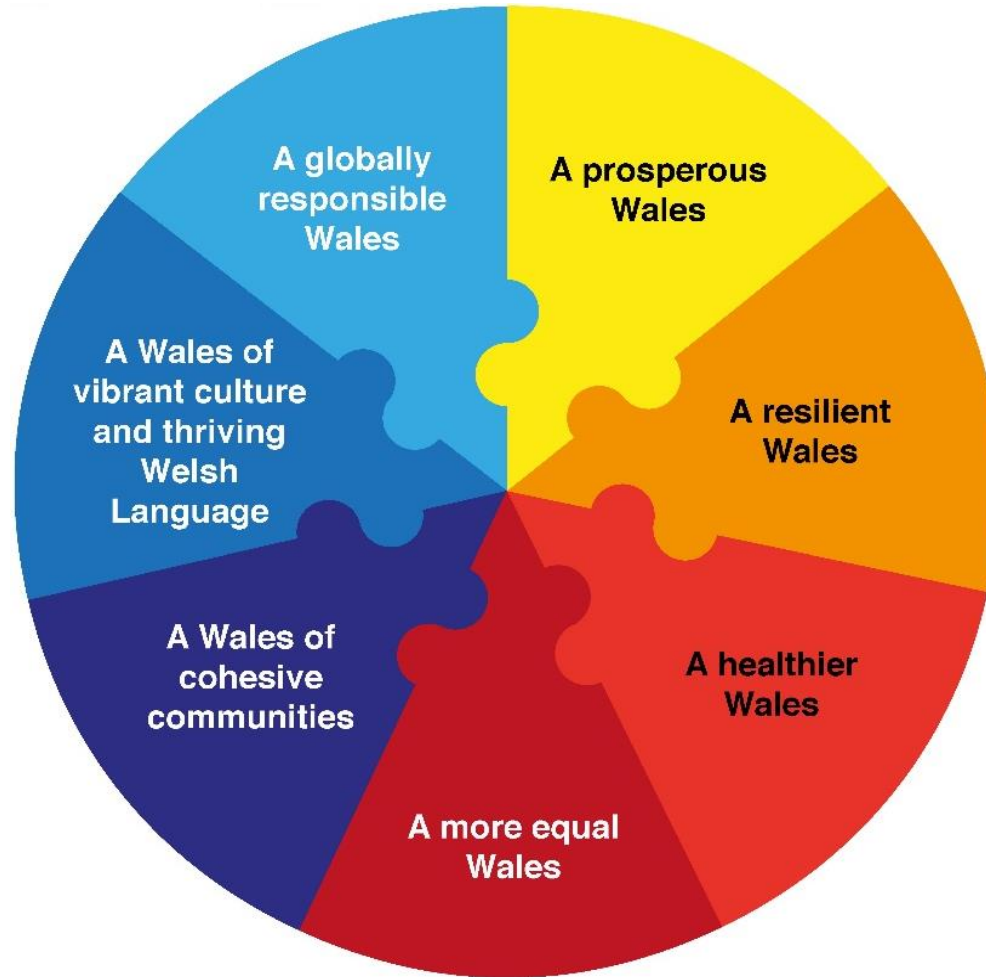
Facilitated Discussion

Andy Sutton

Associate Director, BRE



Well-being Goals



Construction activities

Planning Guidance/Building Regulations

Technical Requirements

Procurement Prioritisations

Green Leases

Low Carbon Travel Plans & Infrastructure Design

Passive Design, Quality environments, designing for Health & Wellbeing

Energy & fabric efficiency, systems optimisation

Low impact materials, designing for low embodied energy, designing for deconstruction



Close

Ed Evans
Director, CECA Wales