

Rhyl New School



Rhyl New School

- 1 Sion Evans**
Design, Construction and Maintenance Manager
Denbighshire County Council

- 2 Alistair Brymer**
Operations Manager
Willmott Dixon Construction



Llywodraeth Cynulliad Cymru
Welsh Assembly Government

“the environment is unsatisfactory to achieve educational aims and the refurbishment is limited..... It is past it’s sell by date and should be targeted as a PFI or and Academy....”



Existing School

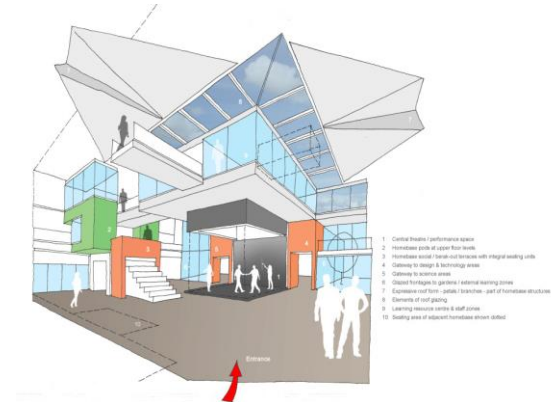
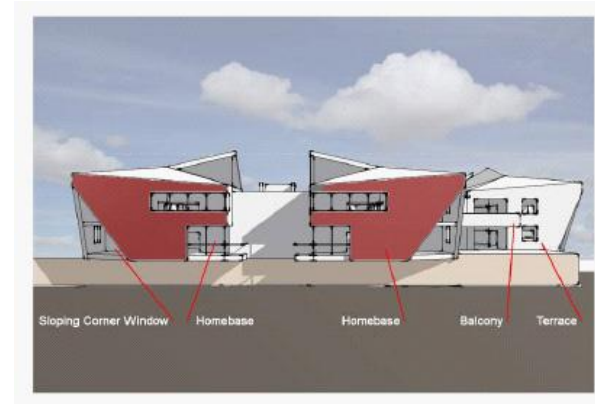
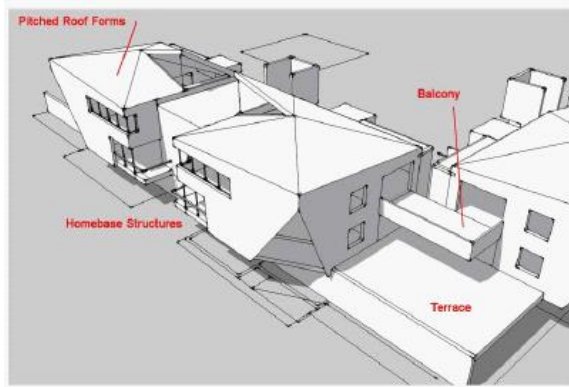


Feasibility / Collaborative Procurement

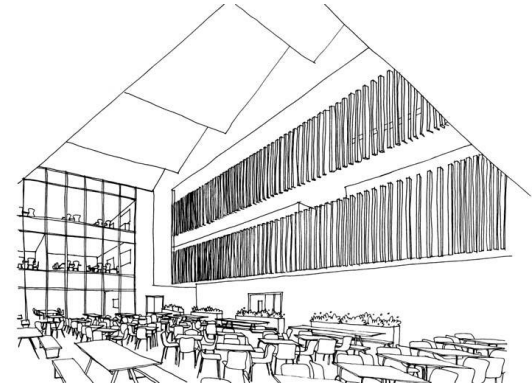


SINCE 1852

The initial concept scheme



The concept



Stakeholder Engagement







WILLMOTT DIXON
SINCE 1852

2 Alistair Brymer Operations Manager



Contract Value

- £20M

Programme

- Start October 2014,
- New Build Complete March 2016
- Demolition and Pitches August 2016

Proposed Scope of Works

- New Build School for 1250 Rhyl High Pupils
- With ground floor integration with Ysgol Tir Morfa pupils
- Demolition of existing school and formation of football pitches
- Extensive Hard & Soft Landscaping including a Multi Use Games Area

Form of Contract

- NEC 3 Design and Build

PROJECT TEAM

CLIENT	Denbighshire County Council
TECHNICAL ADVISOR	Mott MacDonald
CDM-C	Denbighshire County Council
PLANNING	Denbighshire County Council
BUILDING CONTROL	Denbighshire County Council
ARCHITECT	AHR
STRUCTURAL ENGINEER	Ramboll
M&E ENGINEER	Ramboll/Subcontractor
ACOUSTIC CONSULTANT	SRL Technical Services
FIRE ENGINEER	Allwedd Fire Engineering

PROGRAMME & PHASING



WILLMOTT DIXON

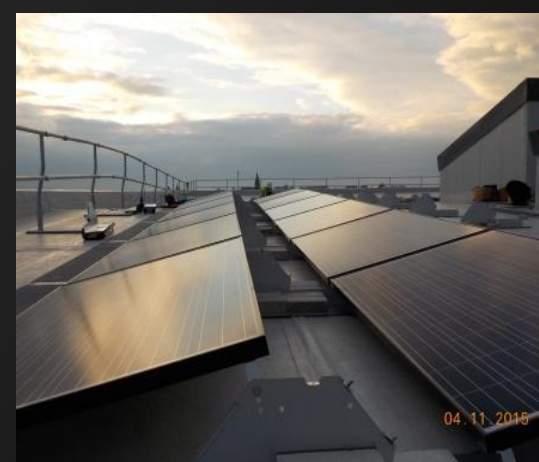
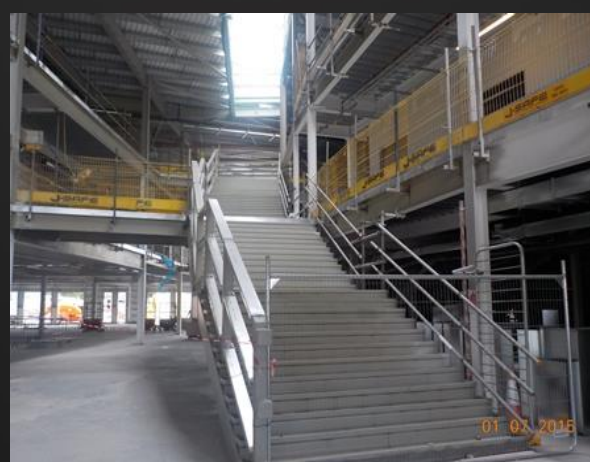
SINCE 1852





WILLMOTT DIXON

SINCE 1852





WILLMOTT DIXON

SINCE 1852

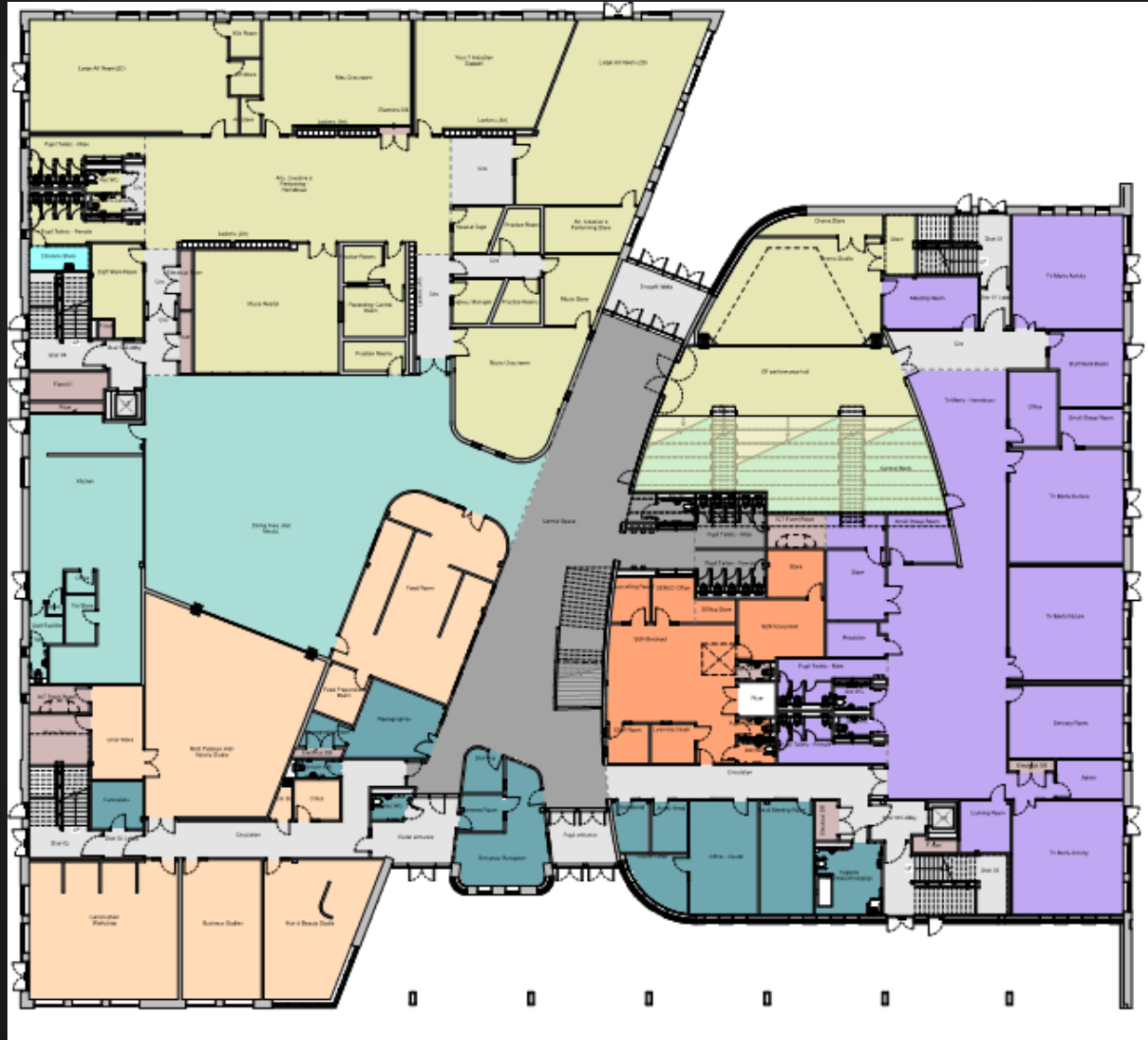




WILLMOTT DIXON

SINCE 1852

GROUND FLOOR

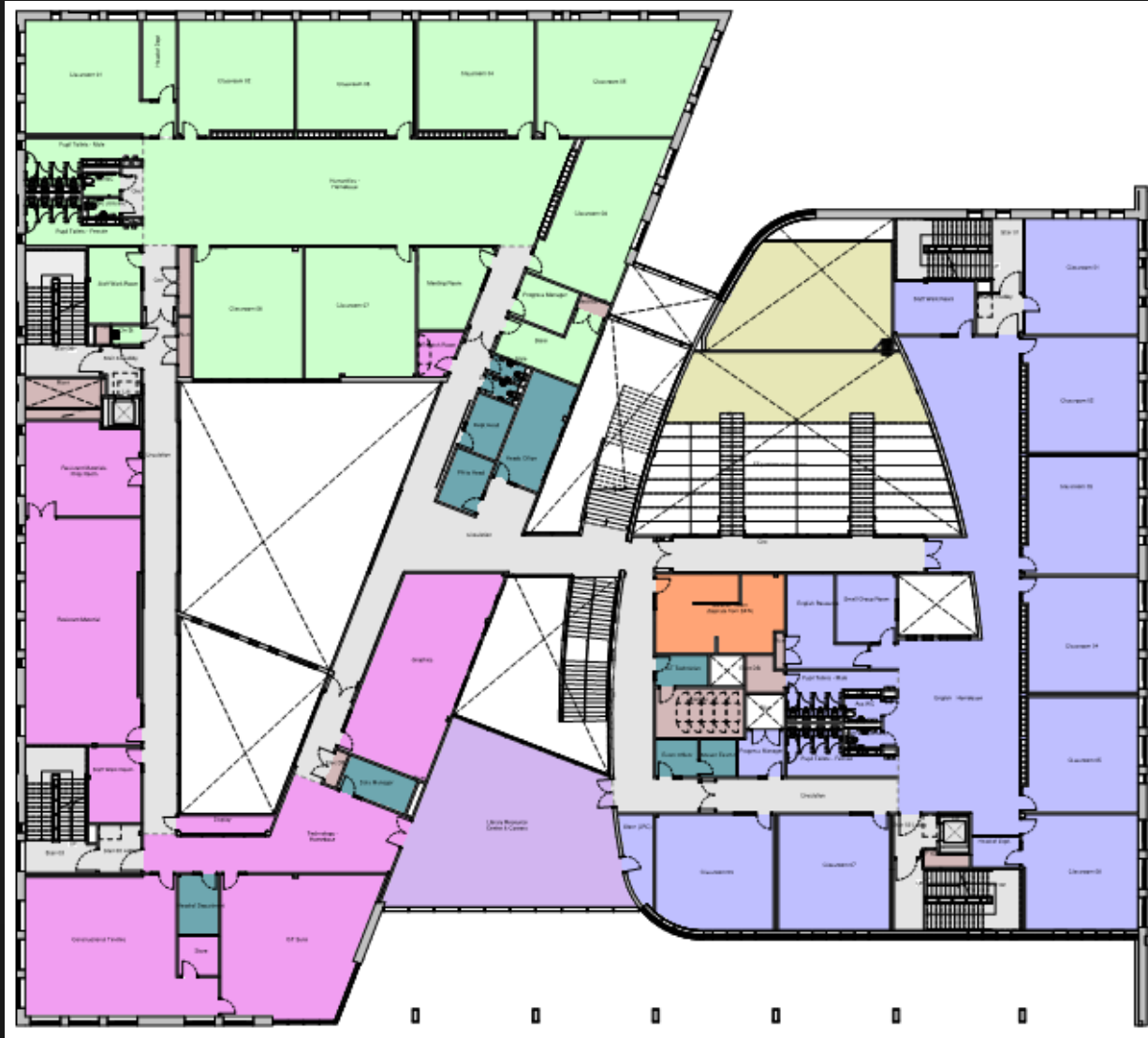


1ST FLOOR

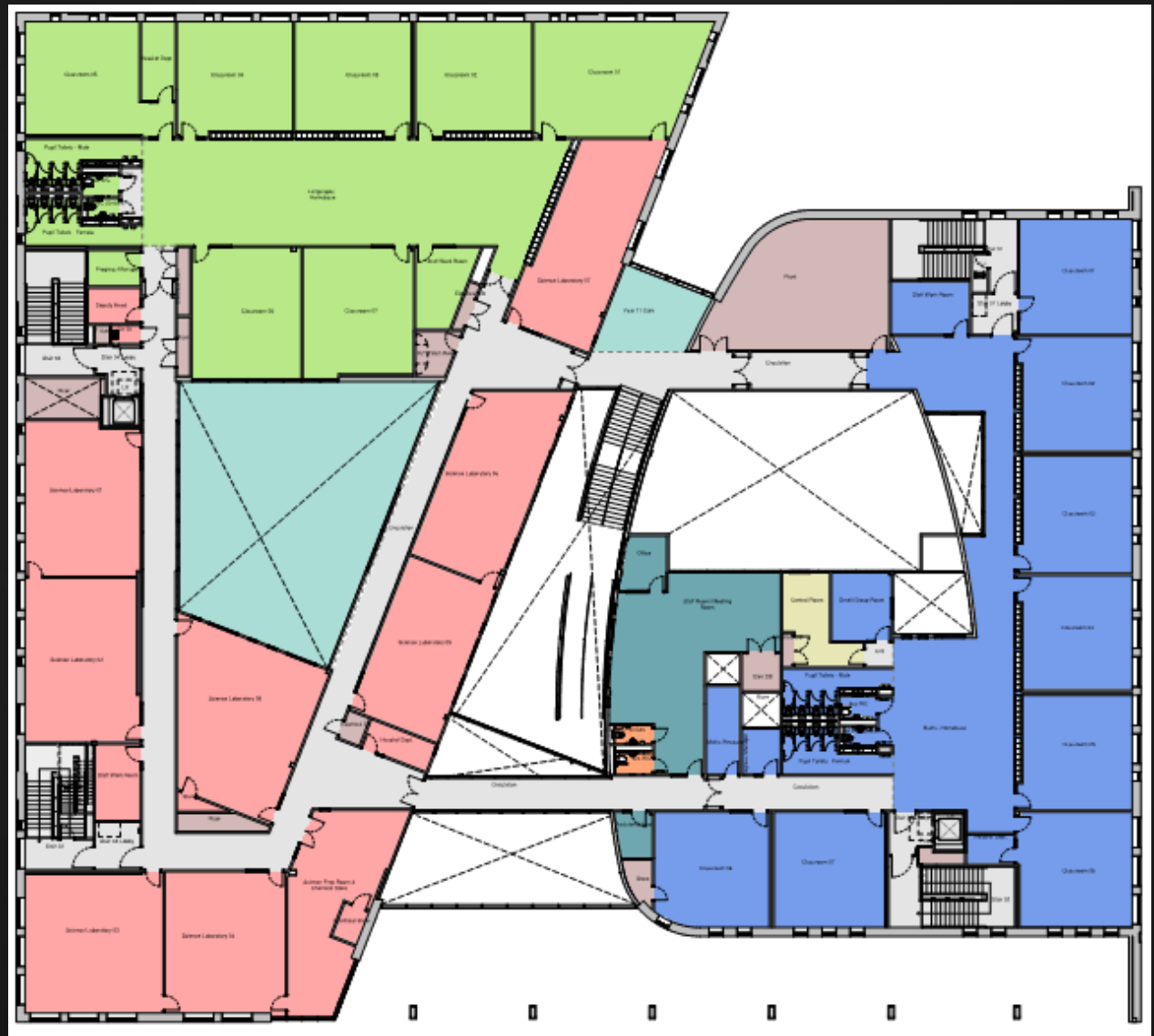


WILLMOTT DIXON

SINCE 1852



2nd FLOOR





WILLMOTT DIXON

SINCE 1852



Community



WILLMOTT DIXON

SINCE 1852



94 weeks of
work experience
and training

71%
AVERAGED
LOCAL
SPEND
IN NORTH WALES



Community



WILLMOTT DIXON

SINCE 1852



Community



WILLMOTT DIXON

SINCE 1852



“The design of Rhyl High School stood out from other school projects by virtue of the quality of its site planning and design and its positive relationship to the community”.

Design Commission for Wales (2014)

Any Questions?