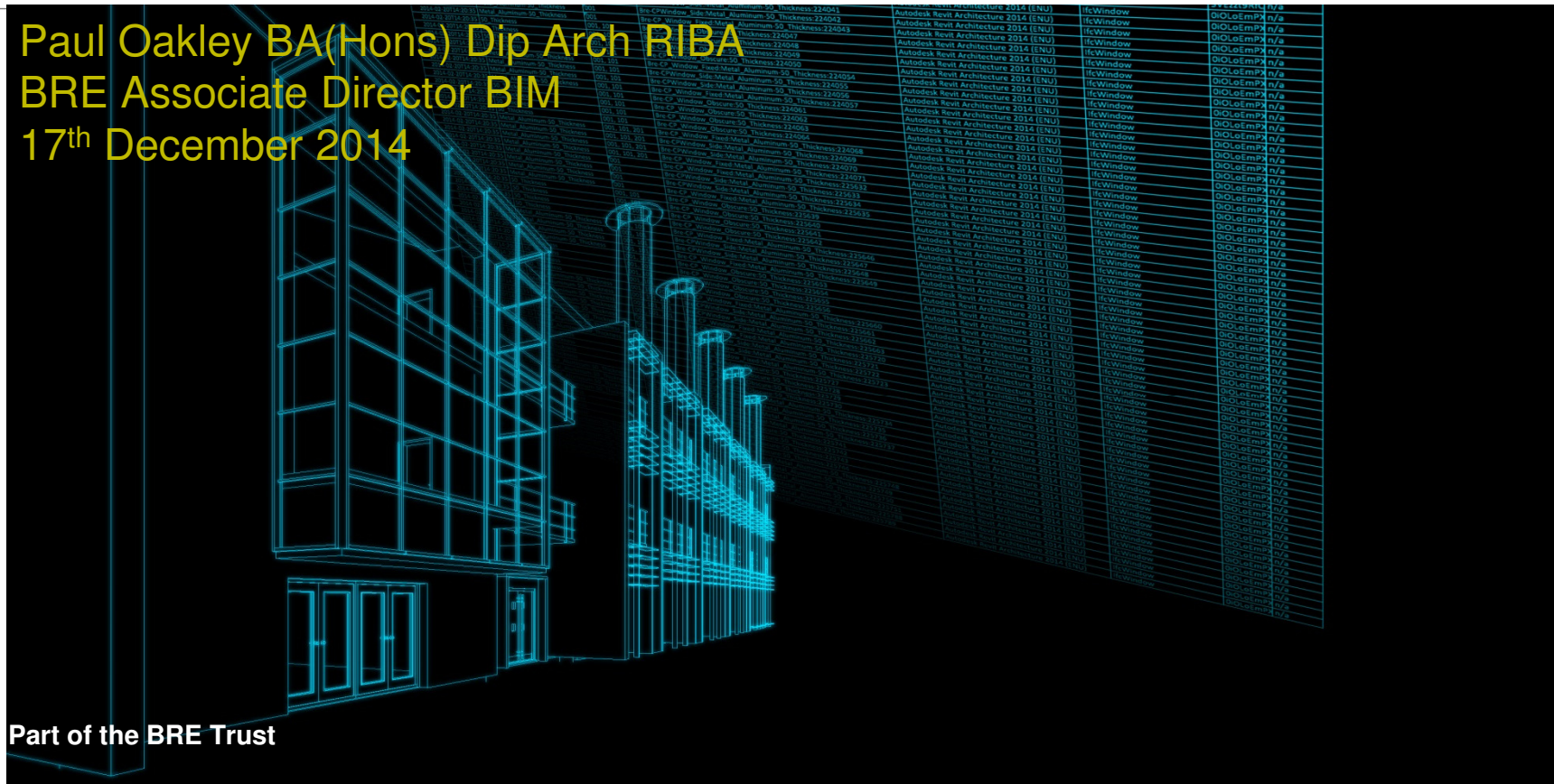


# BIM – Are you BIM Level 2 Ready?

Paul Oakley BA(Hons) Dip Arch RIBA  
BRE Associate Director BIM  
17<sup>th</sup> December 2014



Part of the BRE Trust

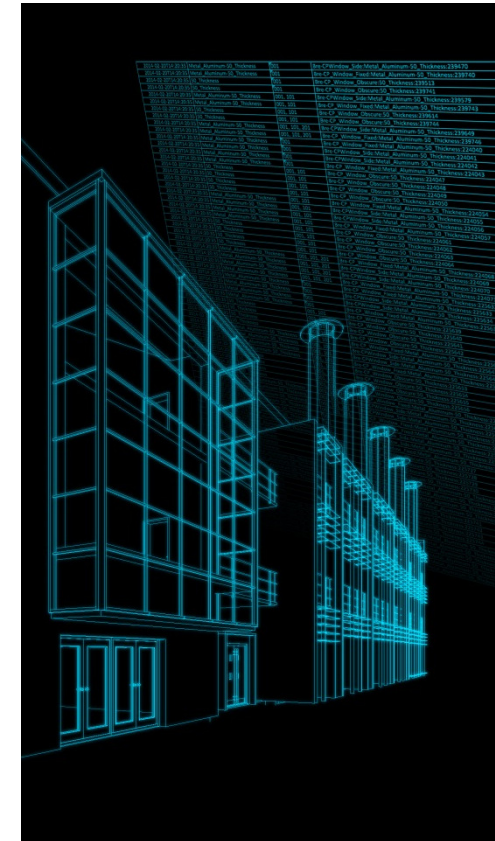
# BIM – Are you BIM Level 2 Ready?



## AGENDA

- Who am I / BRE BIM Team / buildingSMART?
- What's required for BIM Level 2
- Getting Ready for BIM Level 2
- Assessing a companies BIM Capability?
- How BRE can help

Questions



## Paul Oakley - Experience



### Architect / CAD Manager

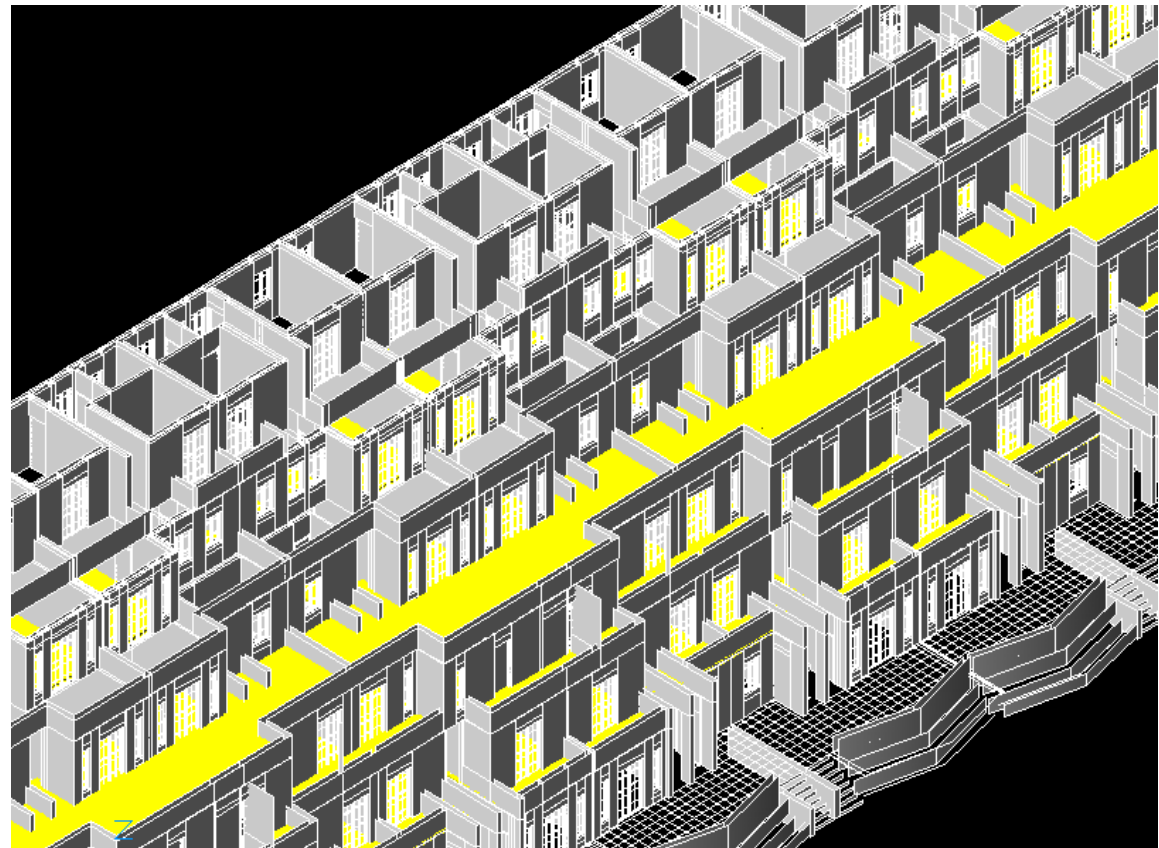
- 10 Years L.A .
- Large International Practices
- CAD / BIM Consultancy

### Software (Autodesk)

- AutoCAD
- AutoCAD Architecture
- Revit

### BIM / CAD Skills

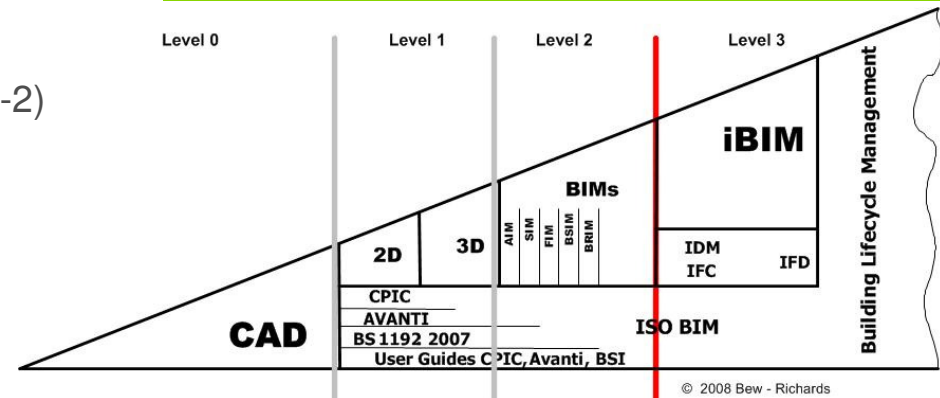
- Software Training
- Standards
- Implementation
- Project Consultancy
- Application Development



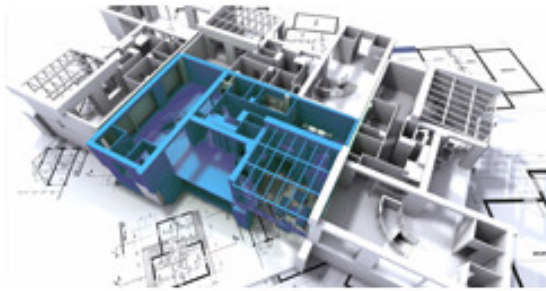
# Industry Involvement

## Industry Groups

- Teamwork 2000
- ADT Community Group
- ADT Technical Forum
- The BIM Community
- CE Avanti Management Team
- CPIC Uniclass Working Party
- CPIC BS1192 Working Party
- BSI (Various Committees including PAS 1192-2)
- CIC BIM Working Party
- AUGluk Director
- AUGluk Chairman (2010-12)
- Building Smart UKI - Board



# BRE BIM Services ([www.bre.co.uk/bim](http://www.bre.co.uk/bim))



[About BIM](#)



[BIM Certification with BRE Global Ltd](#)



[BIM Education with BRE Academy](#)



[BIM Consultancy with BRE](#)



[BIM Projects with BRE](#)



[buildingSMART UK & Ireland](#)

## buildingSMART UKI

bre

- Part of BuildingSMART International
- Membership Organisation
  - Large Companies (250+) = £1,500
  - SMEs (-250), Universities, Charities etc. = £550
  - Individuals = £100
- User Group
- Technology Group

### **BRE run from Jan 2013.**

- Chairman – Mark Bew (BIM Task Group)
- Secretary – Nick Tune (BRE)





## Which BIM?

bre

Term used to define:

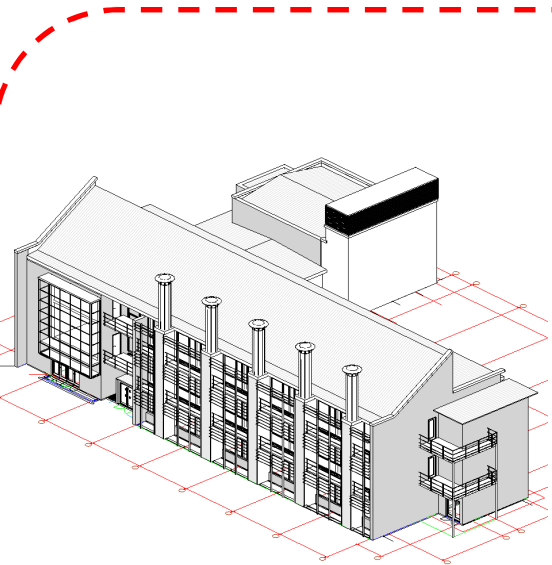
- Software
- 3D Models
- Process

Acronym for...

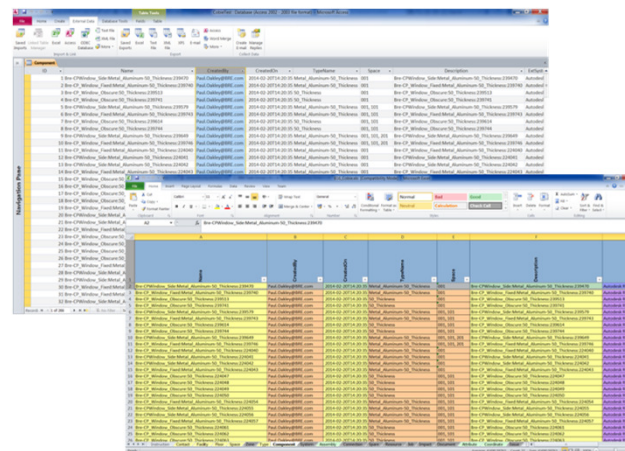
- Building Information Modelling
- Building Information Management



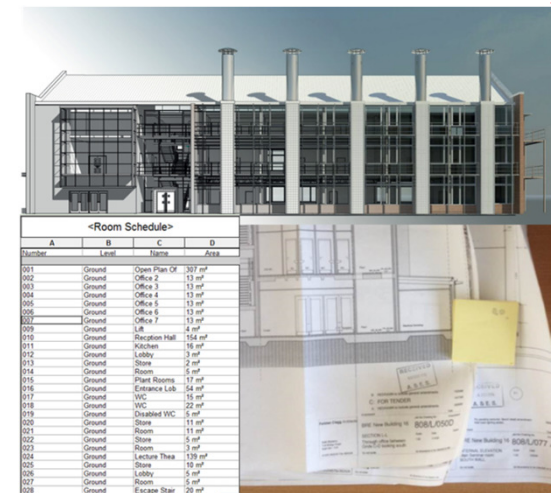




Graphical Model



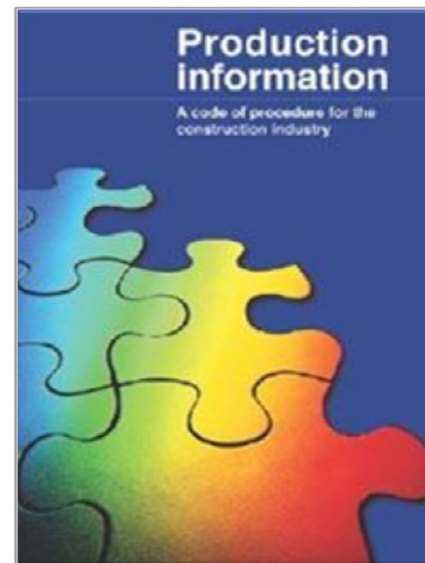
Non Graphical Model



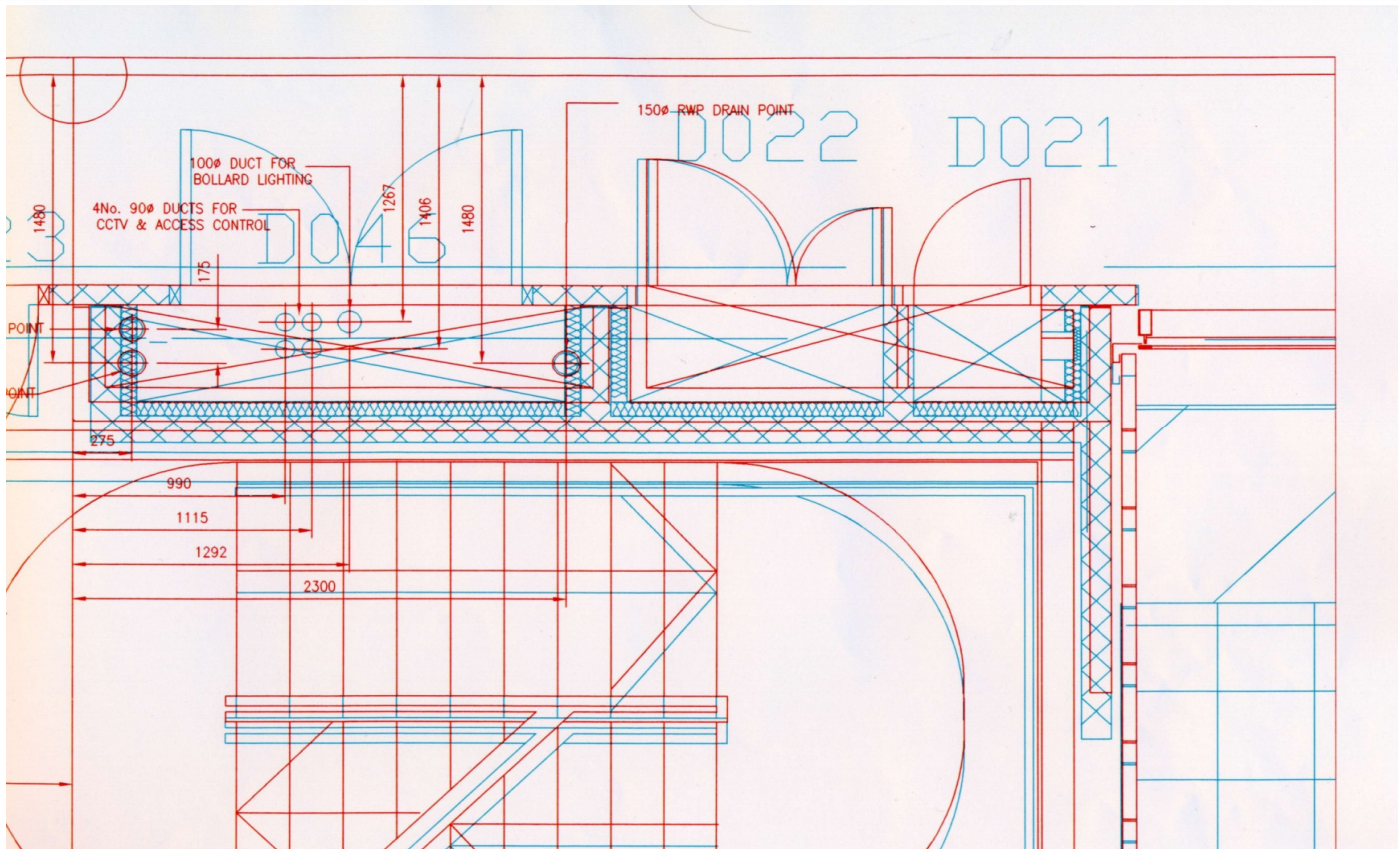
Documentation

## Building Information Model

*“Information is generally, incorrect, incomplete, uncoordinated and ambiguous”*



# “Information is Uncoordinated...”



“Information may be incomplete...”

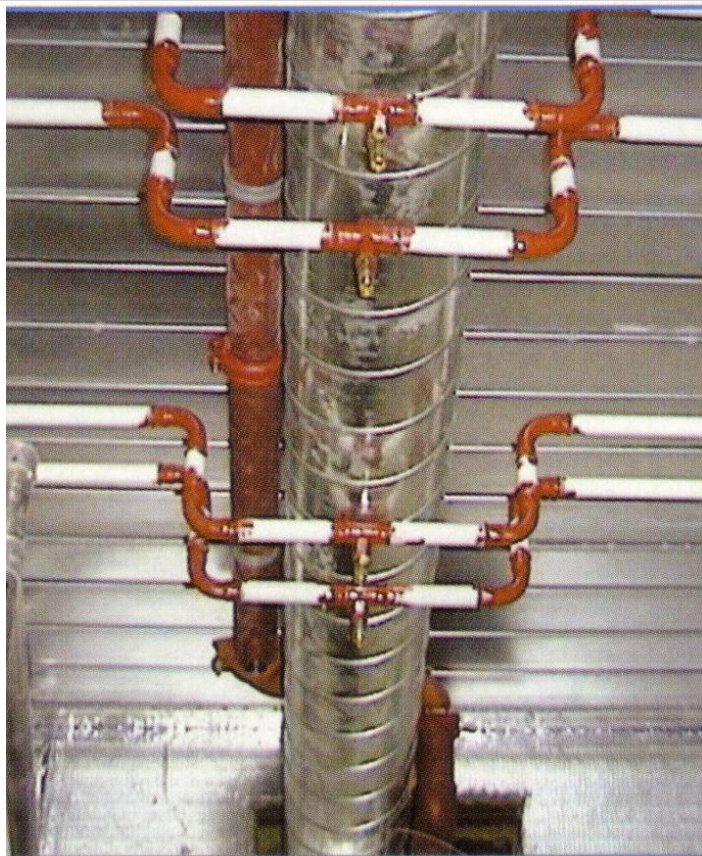
bre



© BRE 2014

“Information is uncoordinated...”

bre



© BRE 2014

“Information is also geospatially incorrect...”

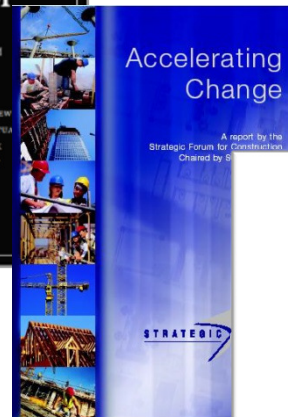
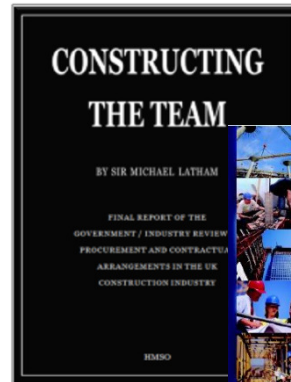
bre



© BRE 2014

# BIM Drivers – Change Identified...

- 1994 Latham Report
  - 30% Reduction
- 2002 Egan Report
  - 10% Time and Cost
  - 20% Reduction in
- 2012 Murphy
  - 10 Million tons (£1.5 Billion) Construction Waste
  - 50% of UK Carbon in Construction processes.
- HMG Construction Strategy 2011
- HMG Construction Strategy 2025



# 2016 Level 2 Deadline + HMG Construction 2025...



## Lower costs

33%

reduction in the initial cost of construction and the whole life cost of built assets

## Faster delivery

50%

reduction in the overall time, from inception to completion, for newbuild and refurbished assets

## Lower emissions

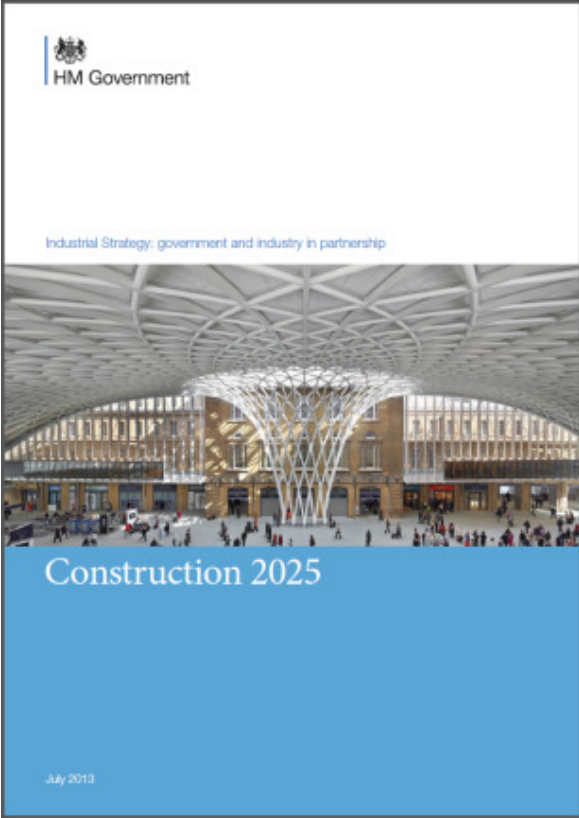
50%

reduction in greenhouse gas emissions in the built environment

## Improvement in exports

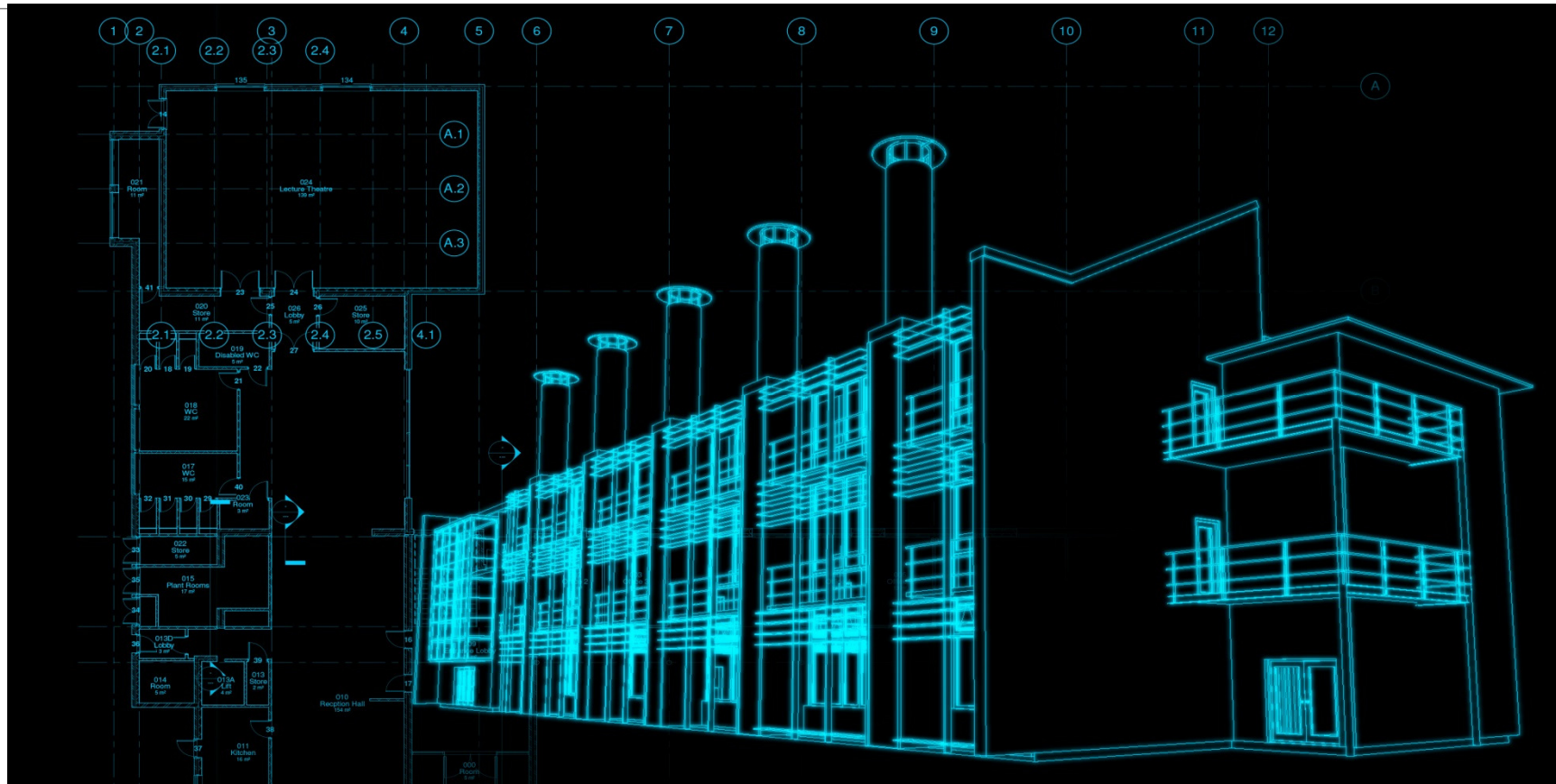
50%

reduction in the trade gap between total exports and total imports for construction products and materials





# BIM – The Requirements for BIM Level 2?



# BIM Maturity Levels – Strategy Paper 2011

0 - Unmanaged CAD probably 2D, with paper (or electronic paper) as the most likely data exchange mechanism.

1 - Managed CAD in 2 or 3D format using BS 1192:2007 with a collaborative environment, possibly standardised data and formats. Commercial data managed by standalone finance and cost management packages with no integration.

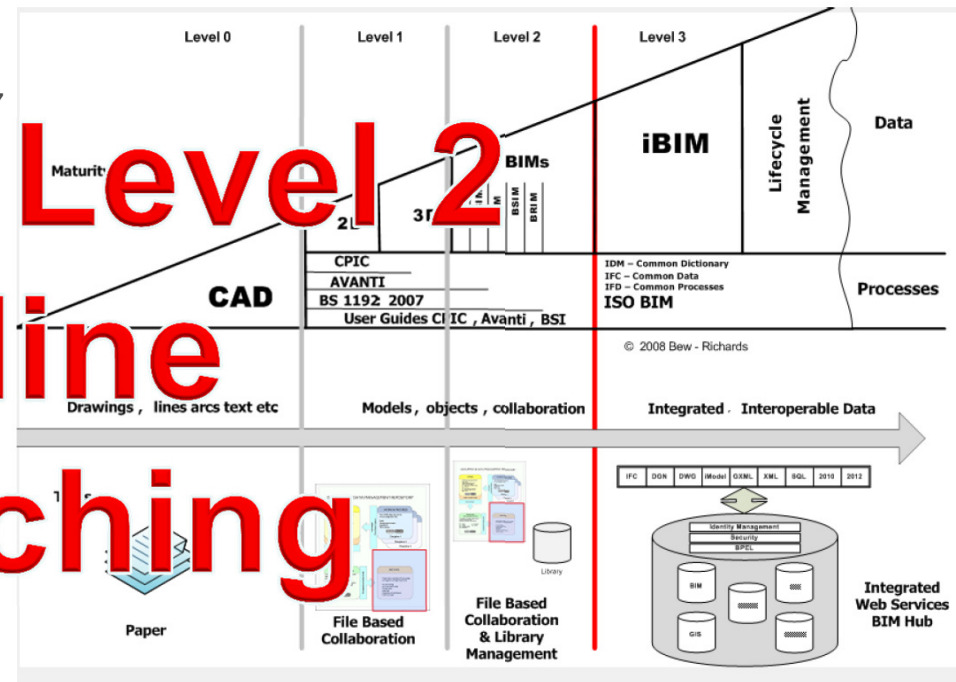
2 - Managed 3D environment with integrated data managed by an ERP. Integration on the basis of proprietary interfaces or bespoke middleware could be regarded as “pBIM” (proprietary). The approach may utilise 4D Programme data and 3D models.

3 - Fully open process and data integration enabled by IFC / IFD. Managed by a collaborative model server. Could be regarded as iBIM or integrated BIM potentially employing concurrent engineering processes.

**2016 BIM Level 2**

**Deadline**

**approaching**



# CIC Co-ordinated project stages

0 Strategy

1 Brief

2 Concept

3 Definition

4 Design

5 Build & Commission

6 Handover & Closeout

7 Operation

## PAS 1192-2:2013

Amendments issued since publication

Date	Text affected
28 March 2013	Corrigendum No. 1 to correct Figures 2, 7, 14, 20 and 21

RIBA Work Stage			CIC Work Stage			
Preparation	A	Appraisal	1	Preparation	1	Brief
	B	Design Brief				
Design	C	Concept	2	Concept Design	2	Concept
	D	Design Development				
	E	Technical Design				
Pre-Construction	F	Production Information	3	Developed Design	3	Developed Design
	F2					
	G	Tender Documentation				
H	Tender Action					
Construction	J	Mobilisation	4	Technical Design	4	Production
	K	Construction to Practical Completion				
Use	L	Post Practical Completion	5	Specialist Design	5	Installation
			6	Construction (Offsite & Onsite)	6	As Constructed
			7	Use & Aftercare	7	In Use

# BIM Level 2 - Key Documents



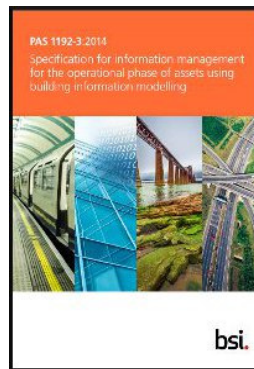
## PAS1192-2:2013



### Government Soft Landings



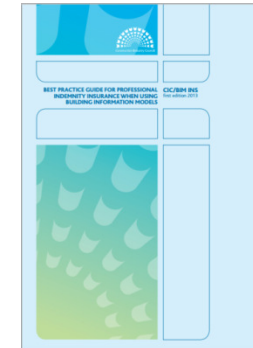
## PAS1192-3:2014



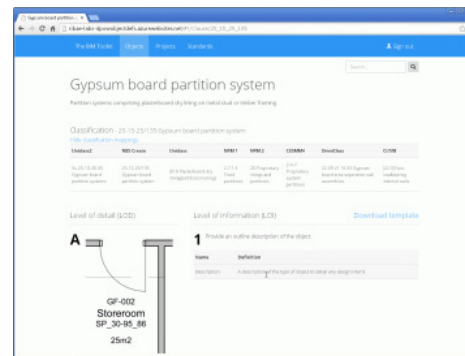
## BS1192-4:2011



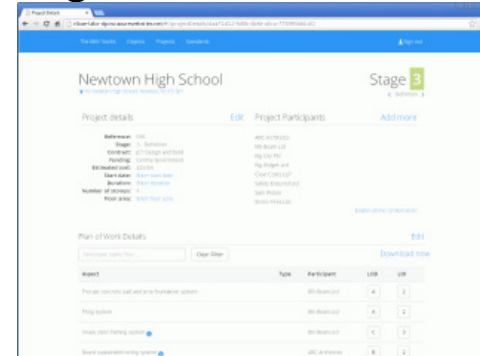
## BIM Protocol (CIC)



### Classification



### Digital Plan of Work



# BIM Level 2 - Supporting Documentation



## PI For BIM (CIC)



## CPIx BIM Execution Plan



## CPIx BIM Assessment

Ref.	Question	Answer	Evidence (if applicable)	Decision by Team Leader
Q1.1	Are you prepared to issue your model CAD/BIM format files?			
Q1.2	If you are not prepared to issue model CAD/BIM format files, why not?			
Q2.1	Do you work for a CAD/BIM Specialist?			
Q2.2	If you do not work for a CAD/BIM Specialist, why not?			
Q2.3	Do you work to the national standard BS 1192:2007?			
Q2.4	If your Standards are not BS 1192:2007, what are they based upon?			
Q2.5	Do you produce a BIM model in the Model environment, if a BIM model is used during the Project's Design Process?			
Q2.6	Do you understand the Level of Information Required (LOI) and the data control table?			
Q2.7	Do you understand the Level of Detail (LOD) model as a basis of the project delivery strategy?			
Q3	How do you demonstrate to us that you are prepared to issue to us model files in compliance with BS 1192:2007 (BIM Execution Plan)?			

## CPIx IT Assessment

Team Member Position	Name	Telephone	Email
Project Leader / Partner in Charge			
CAD Manager			
IT Manager			
Other Roles (identify)			
Other Roles (identify)			

# BIM Level 2 - Supporting BSI Standards



## BS1192:2007



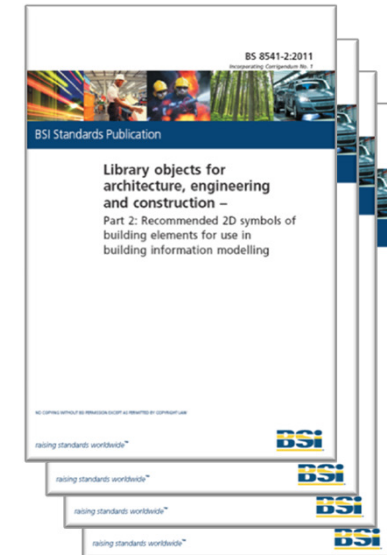
## BS7004:2013



## PAS 91:2013



## BS 8541 Series



# Prequalification Requirements




Are you capable of delivering a BIM Level 2 Project?

## PAS 91:2013



## CPIC BIM Assessment

 **CPiX - BIM ASSESSMENT FORM**  
(Based on working documentation provided by Skanska)

**1 - Standard Information**

Company BIM Representative Name		Interviewee/Person Completing the Form	
Telephone No.	Mobile No.	E-Mail Address	Web Site URL


**2 - BIM Gateway Questions**

If the answer to any of the following questions is 'No', contact, Project Team Leader, 'name', telephone number, 'street address'.

Ref	Question	Answer	Evidence (if applicable)	Decision (by Team Leader)
G1.1	Are you prepared to issue your native CAD / BIM format files?			
G1.2	If you are not prepared to issue native CAD / BIM format files why not?			
G2.1	Do you work to a CAD / BIM Standard?			
G2.2	If you do not work to a CAD / BIM Standard, why not?			
G2.3	Do you work to the national standard BS 1192: 2007?			
G2.4	If you do not work to the BS 1192: 2007, what are they based upon?			
G2.5	Do you produce a BIM model as an iterative process? E.g. 30% then 60% then 90% stages.			
G2.6	Do you understand the Model Construction Strategy?			
G2.7	Do you understand the 'Level of Information' required at each of the project delivery stages?			
G2.8	Do you understand the 'Level of Detail' required at each of the project delivery stages?			
G3	How do you demonstrate or what measures do you have in place to ensure compliance with your CAD / BIM Standard?			

CPiX BIM Assessment Form 1.0 20 February 2011

## CPIC IT Assessment

 **CPiX - IT ASSESSMENT FORM**

**Part 1 - General Information and Company Policies on Information Exchange**

Part 1 of this questionnaire covers general policy issues on the exchange of electronic information within the firm.

**1.1 - General Information**

Please provide the following general information on your firm and your role on the project (if applicable) together with details of key personnel who are likely to be involved in information exchange.

**1.1.1 - General and Project Information**

Project Name	
Company Name	
Role on Project	
Your reference No for this project	

**1.1.2 - Organisation and Team Information**

Team Member Position	Name	Telephone	Email
Project Leader / Partner in Charge			
CAD Manager			
IT Manager			
Other Roles (specify)			
Other Roles (specify)			
Other Roles (specify)			

\* If Enquiry

CPiX IT Assessment Form 1.0 20 February 2011

# Getting ready for BIM Level 2?





## Sample PQQ Questions



<b>Questions</b>	<b>Evaluation Scoring Criteria</b>
Have you completed three project over £50 million complying with PAS 1192:2-2013 ?	3 Project = 10 2 Project = 6 1 Project = 3 None = 0

PQQ question issued March 2013 approx.  
3 weeks after PAS released...

# Sample PQQ Questions



<b>Questions</b>	<b>Answer</b>	
With reference to the UK government maturity levels for BIM adoption, at which level would you say your organisation currently operate?	Level 3 BIM maturity Level 2 BIM maturity Level 1 BIM maturity Level 0 BIM maturity	

## Sample PQQ Questions

Questions	Answer	Evaluation Scoring Criteria
With reference to the UK government maturity levels for BIM adoption, at which level would you say your organisation currently operate?	Level 3 BIM maturity Level 2 BIM maturity Level 1 BIM maturity Level 0 BIM maturity	Level 3 BIM maturity = 10 Level 2 BIM maturity = 5 Level 1 BIM maturity = 2 Level 0 BIM maturity = 0

Other PQQ documents requesting “BIM Level 5...”

# Assessing a Company's BIM Capability



## ISO Accreditation for IT or...

- IT Policy Documentation
- IT Infrastructure
- IT Hardware
- IT Support
  - Antivirus / security
  - Backup
- Workstation Spec
- IT Implementation
  - Software Deployment
  - Software Libraries



"SURELY THERE'S MORE TO CUSTOMISING THE SOFTWARE  
THAN JUST DECORATING THE BOX"

# Company, People, Staff Skills & Assessment

bre

- Company Information
- Disciplines, Services, Sectors, BIM Services
- Professional Skills
- Interview Assessments
- Staff Software Skill Assessments
- Staff Software Training
- Staff Software Mentoring
- Staff Software Support mechanism

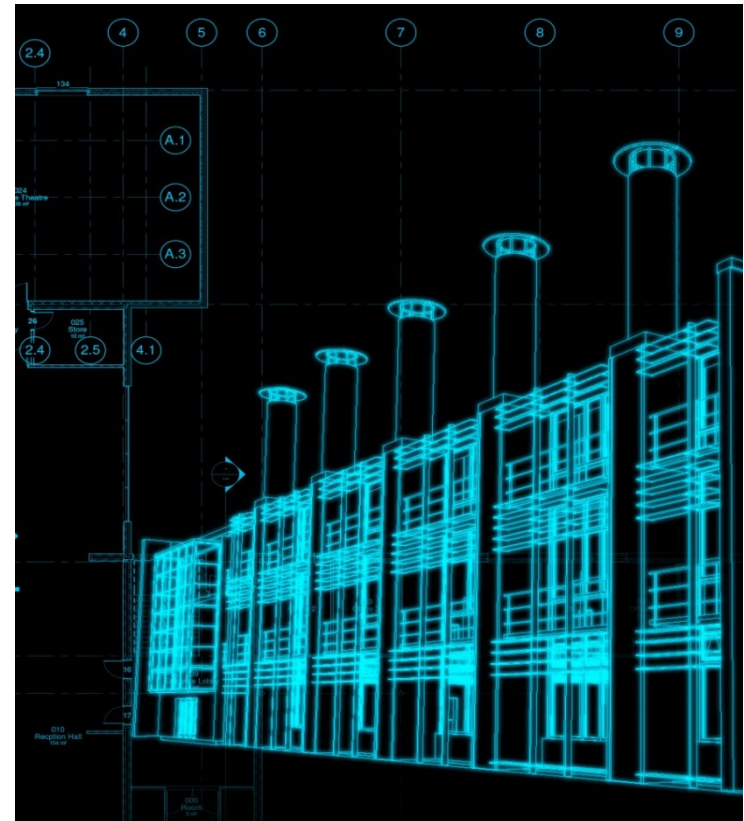


# Software Information

- What software do you use?
- What software have you purchased?
- Purchase date?
- Annual Upgrades

## Software Types

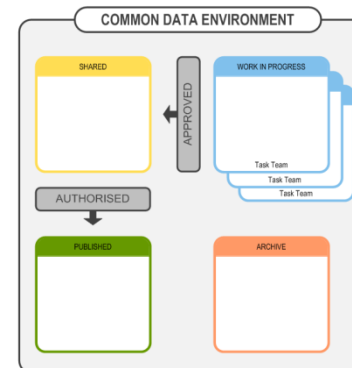
- Design Authoring Software
- Analysis and Clash Avoidance Software
- Visualisation and Presentation Software
- Other BIM related software
- General Office Software



# Common Data Environment

## Solutions

- Controlled Exchange of information
- Extranet Systems Used
- Data Exchange Software used.
- Data Exchange Formats used





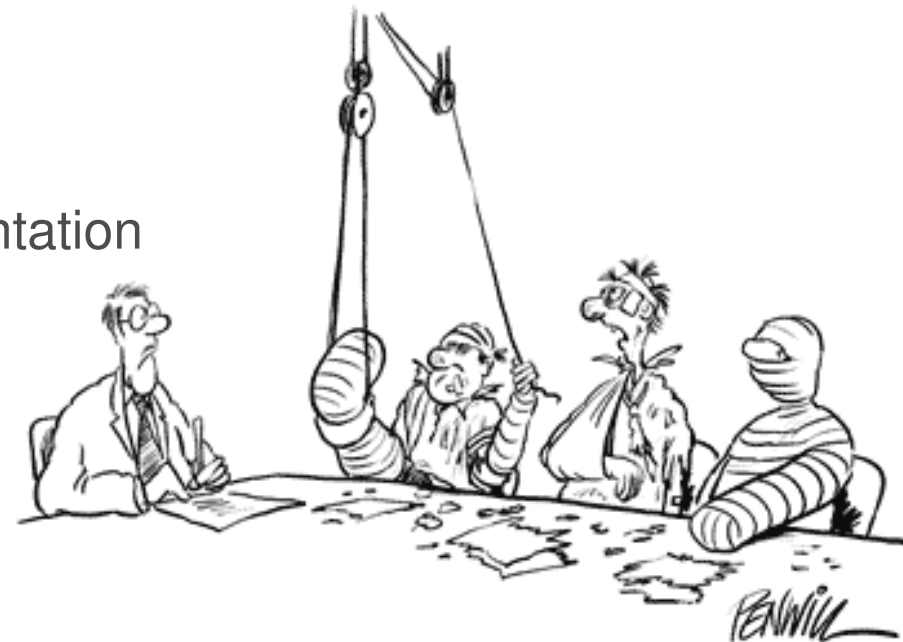
# Standards, Methods and Processes (SMPS)

## Company Documentation

- CAD Standards
- BIM Standards
- Handbooks / Guidance Documentation

## Software Implementation

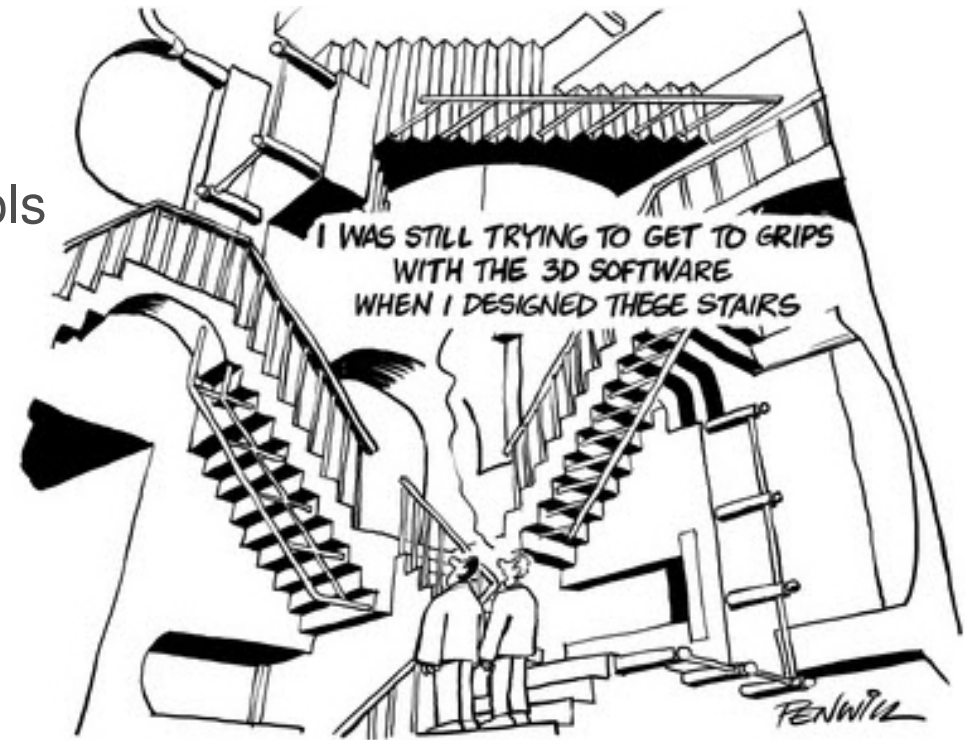
- Centralised Libraries
- Title Blocks
- Templates / Seed Files
- Support Mechanism
- Ownership



## Case Studies

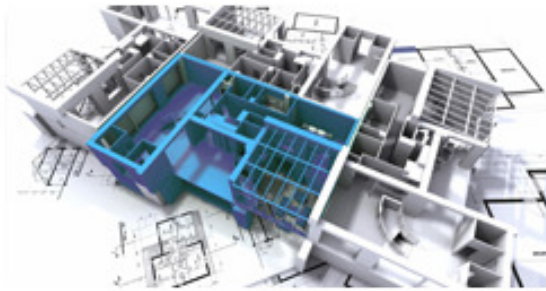
### BIM Execution Plan

- Response to EIR
- Standards Methods and Protocols (Implemented)
- Deliverables
- Delivery Plans
- Roles and Responsibilities
  - Task Lead
  - Task Delivery Manager
  - Task Information Manager





# BRE BIM Services ([www.bre.co.uk/bim](http://www.bre.co.uk/bim))



[About BIM](#)



[BIM Certification with BRE Global Ltd](#)



[BIM Education with BRE Academy](#)



[BIM Consultancy with BRE](#)



[BIM Projects with BRE](#)



[buildingSMART UK & Ireland](#)

# BIM Level 2 Certification Schemes



## BRE BIM Certificated Professional Schemes

- Task Information Manager
- Project Information Manager
- Project Delivery Manager



## BRE BIM Business System Certification Scheme

- Audited BIM Capability Assessment

**Employer Information Requirements (EIR)**

Project Name: Environmental Building (Building 10)  
Project Address: Building 10  
Osborne  
Wotton  
Hants  
WCO5 8XJ  
Project Number: A1007  
Date: 01/09/2009

**Pre-Contract BIM Execution Plan (BEP)**

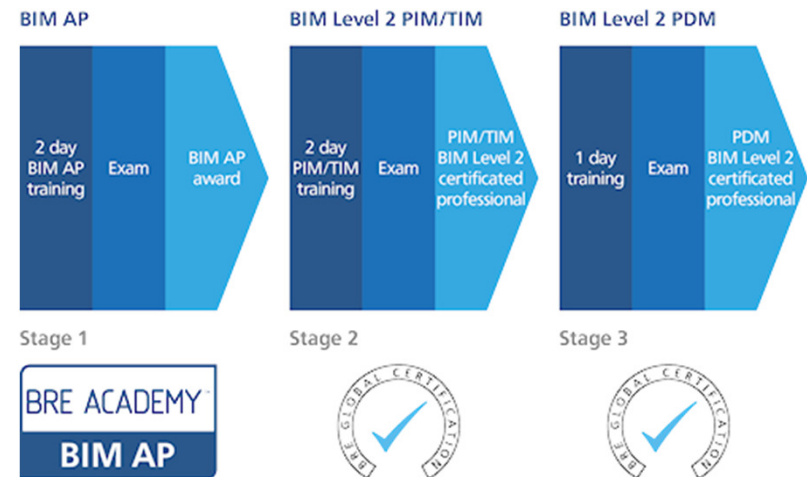
Project Name: Environmental Building (Building 10)  
Project Address: Building 10  
Osborne  
Wotton  
Hants  
WCO5 8XJ  
Project Number: A1007  
Date: 01/09/2009



# BIM Level 2 Training Course



- BIM Foundation Course (AP)  
Covering BIM processes, procedures, information models, management and collaboration
- BIM Level 2 PAS1192-2  
Information Management (PIM / TIM)  
Project Delivery Manager (PDM)



\*PIM / TIM / PDM 'examination only' route available to experienced practitioners

## Business Certificate Scheme Benefits

bre

- PAS 91 (Working towards UKAS accreditation )
- BRE Certificated
- Audited Business Evaluation
- Defined Industry Benchmark
- Lean Process
  - Reduced Employers Effort / Cost
  - Reduced Supply Chain Effort / Cost
- Checked by Industry Specialist and Supported by BuildingSMART UKI



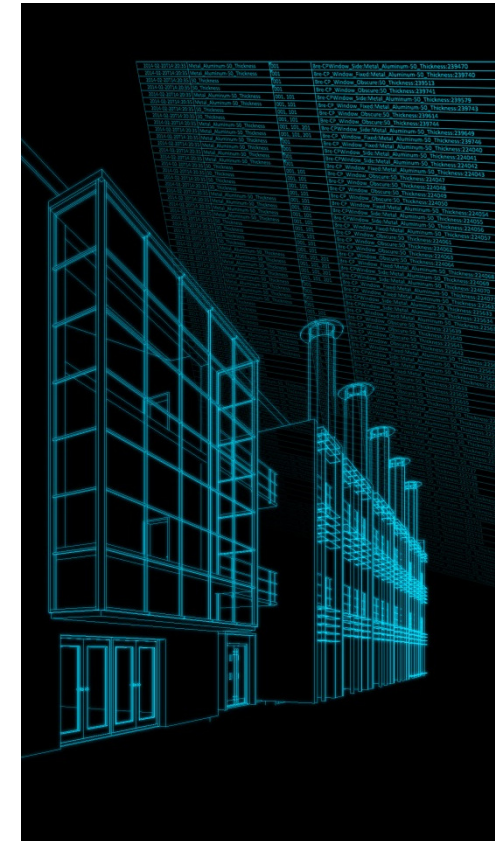
# BIM – Are you BIM Level 2 Ready?



## AGENDA

- Who am I / BRE BIM Team / buildingSMART?
- What's required for BIM Level 2
- Getting Ready for BIM Level 2
- Assessing a companies BIM Capability?
- How BRE can help

Questions





## Thank You

bre

Questions?

Paul Oakley

Associate Director BRE

OakleyP@Bre.co.uk

