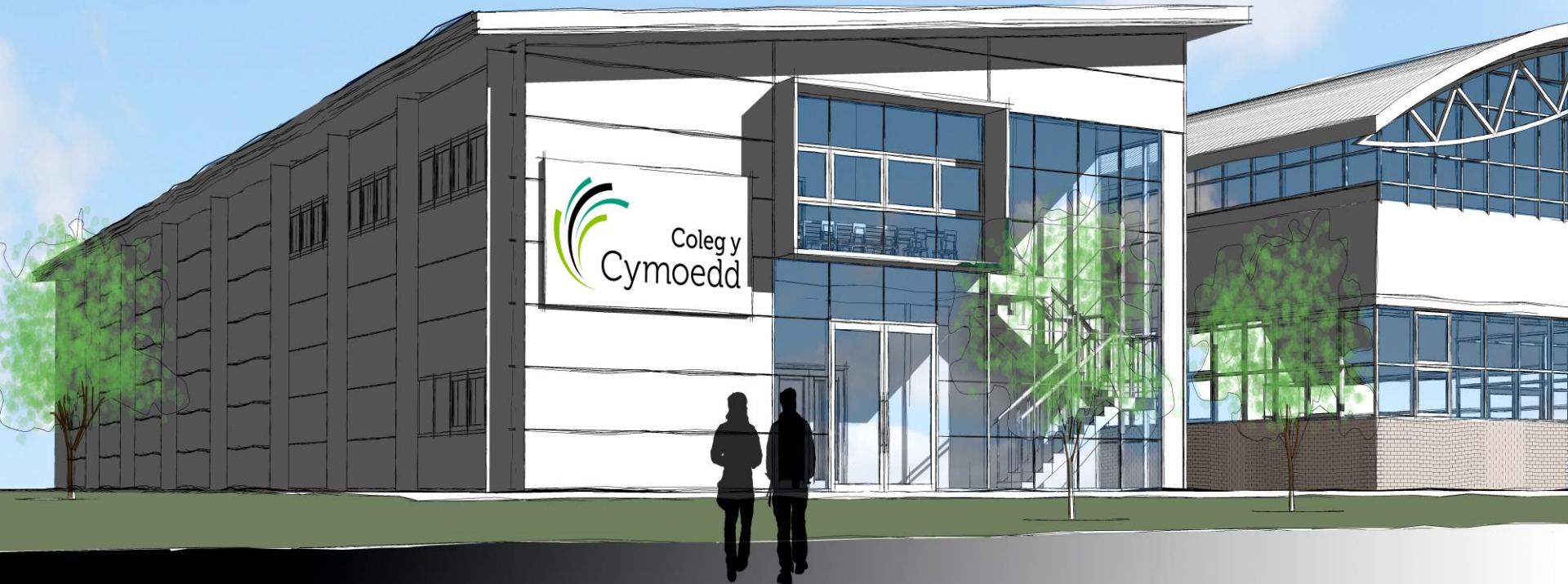


Railway Training Centre of Excellence CEW Exemplar Presentation

Coleg y Cymoedd
Mott MacDonald
Interserve Construction



Exemplar Project

Rail Training Centre Coleg y Cymoedd - Nantgarw

Speeding up the construction process through
collaboration and teamwork

22nd July 2015

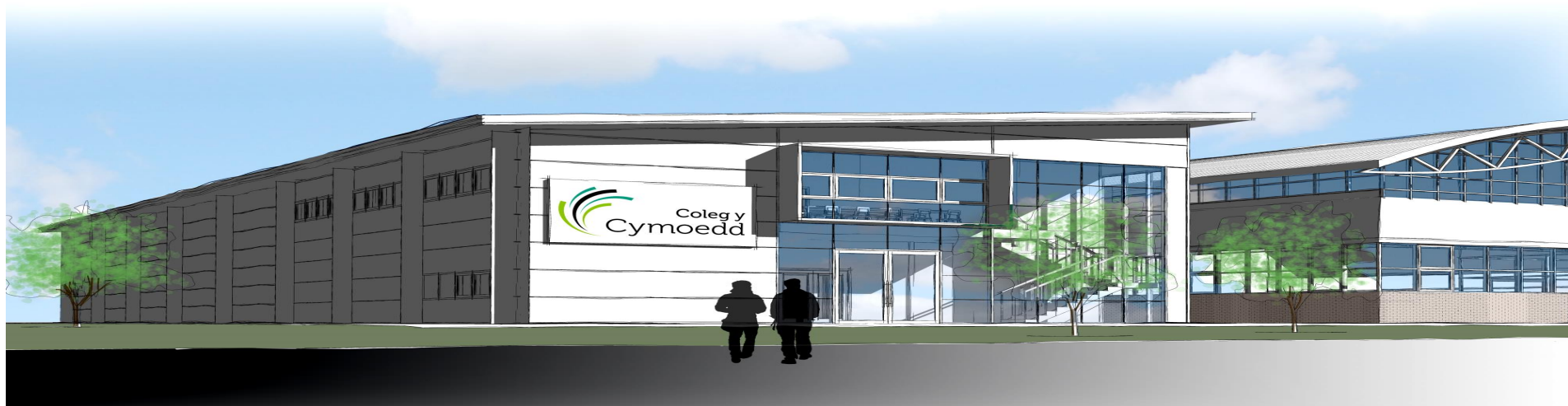


Paul Jennings

Director

Constructing Excellence in Wales

Paul Davies - Director of Estates Coleg y Cymoedd



Welcome

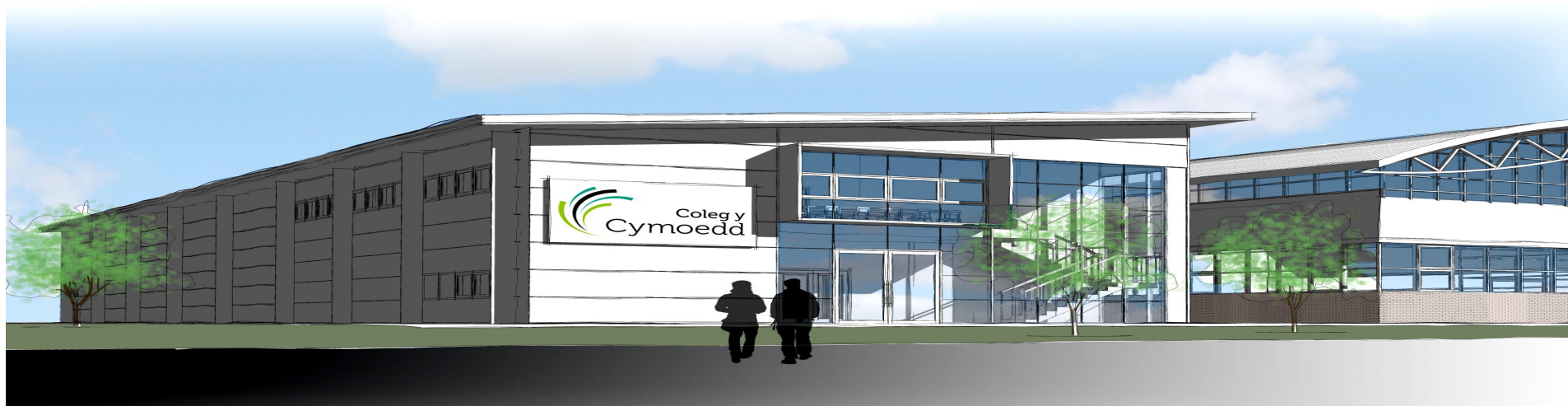
- Alun Owen - Principle Surveyor Mott MacDonald
- Deian Hopkin - Pre- Construction Lead Interserve Construction
- Phil Gilbert - Contracts Manager Interserve Construction

Project Overview

- Scope of Coleg y Cymoedd Requirements
- Challenges
- Sustainable Considerations
- Achievements



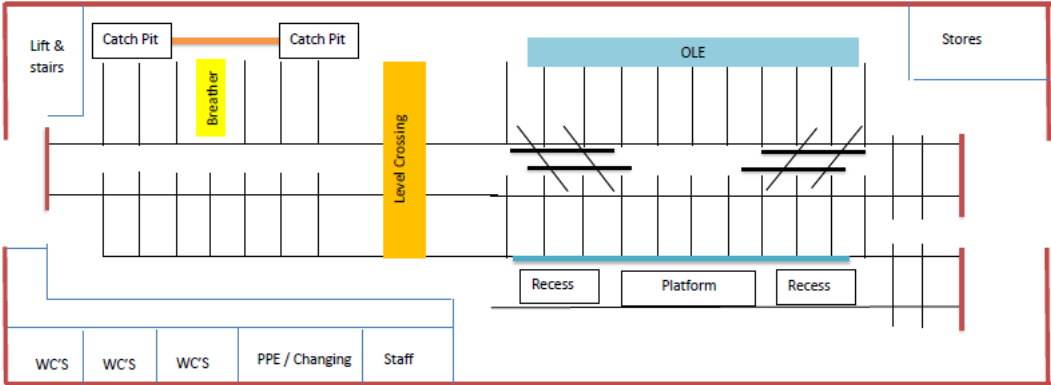
Alun Owen - Project Manager/Principle Surveyor Mott MacDonald



- Mott MacDonald Appointment (PM/QS) -September 2014
- Railway Training Centre of Excellence - CEW?
- Completion for New Term September 2015
- Budget £3.2m (incl. VAT, fee's/surveys &equipment/land purchase)
- Functional Building
- Compliance with External Funding
- Motor Vehicle Training Centre of Excellence (Ystrad Mynach Campus)

Employers Works Information (Plan at Tender)

Ground Floor



First Floor



Project Programme

- Mott MacDonald Appointed
 - Contractor Appointment
 - Planning Submitted
 - Prepare & Tender Work Packages
 - Agree Total of The Prices
 - Mobilise
 - Commencement
 - Complete
- 
- September 2014
 - 6th October 2014
 - 21st November 2014
 - October 2014 - January 2015
 - End of January 2015
 - February 2015
 - 2nd March 2015
 - 1st September 2015

- Procurement
- Contractor Selection (the team)
- Risk & Value Management
- Regular Meetings/Workshops
- Early Consultation
- KPI's

Key Project Risks

- Programme
- Design & Procurement; Proceeding in Advance of Planning Approval
- Maintaining Design Progress
- Budget & Spend Profile
- Advance Orders
- Specialist Equipment & Design
- Risk Allowance; Note to Exceed 1.25% of Work Packages
- Schedule of Savings
- Operational Commissioning Period
- Risk Profile/Key Decisions

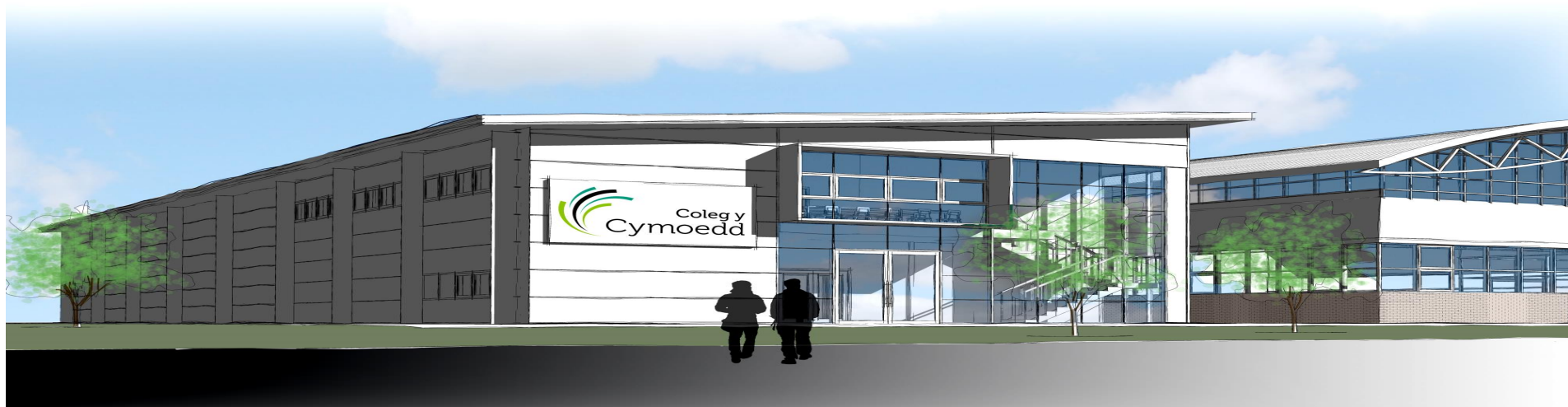
Summary

- On Target for Completion 1st September 2015
- On Budget
- ‘Collaboration’
- The ‘other’ One!
- ‘Client Satisfaction’



Redefining the future
for people and places

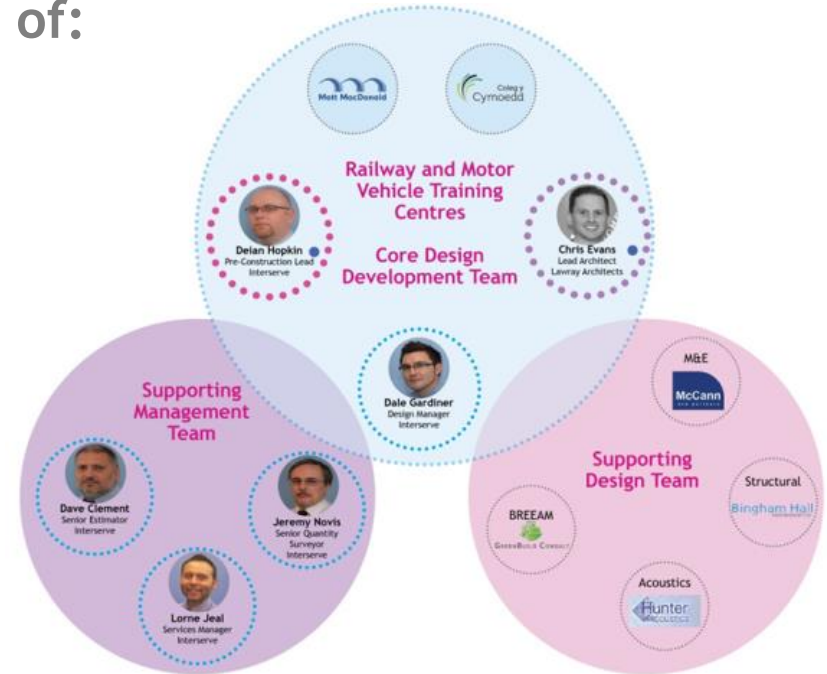
Deian Hopkin - Pre Construction Lead Interserve Construction



Collaboration

True Collaborative Opportunity to Develop from the Earliest Stage Based on the Principles of:

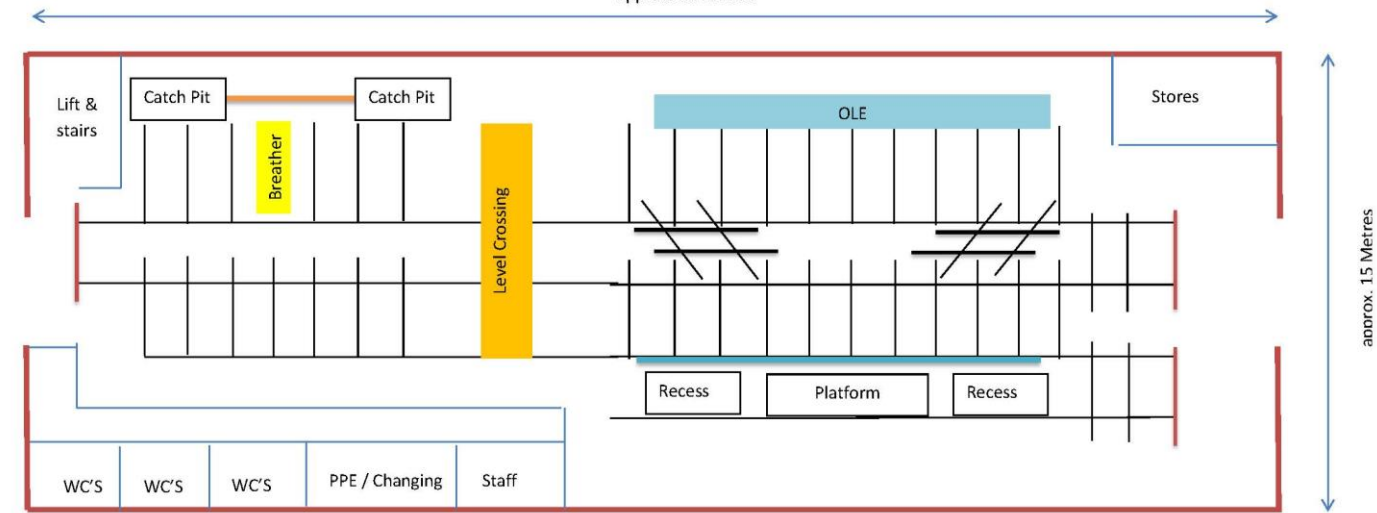
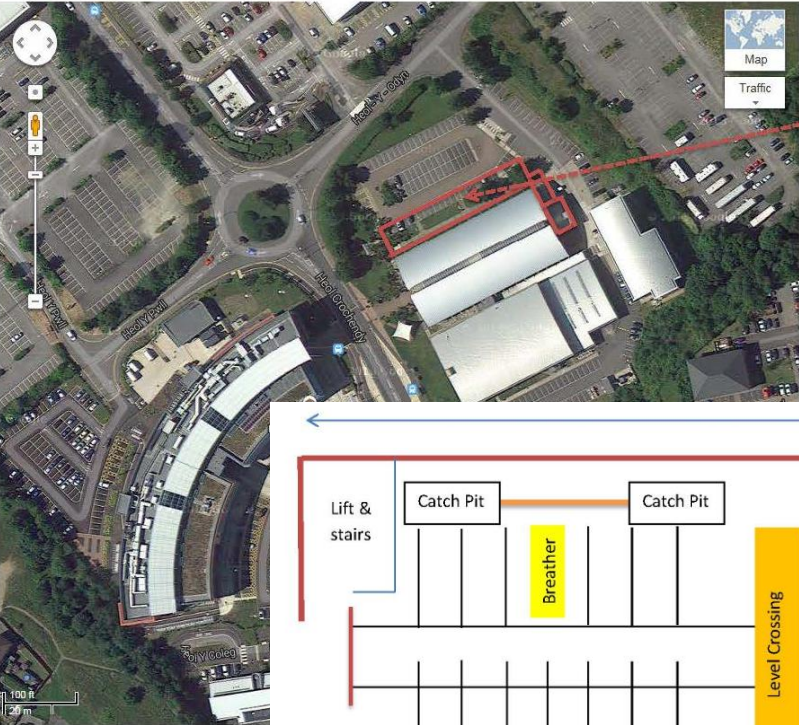
- One Team Approach
- Value Management
- Design Management
- Environmental Management (BREEAM)
- Construction Management/Logistics



Bingham Hall
PARTNERSHIP LTD



Starting Point



GROUND FLOOR NOT TO SCALE

Development from RIBA Stage 1/2

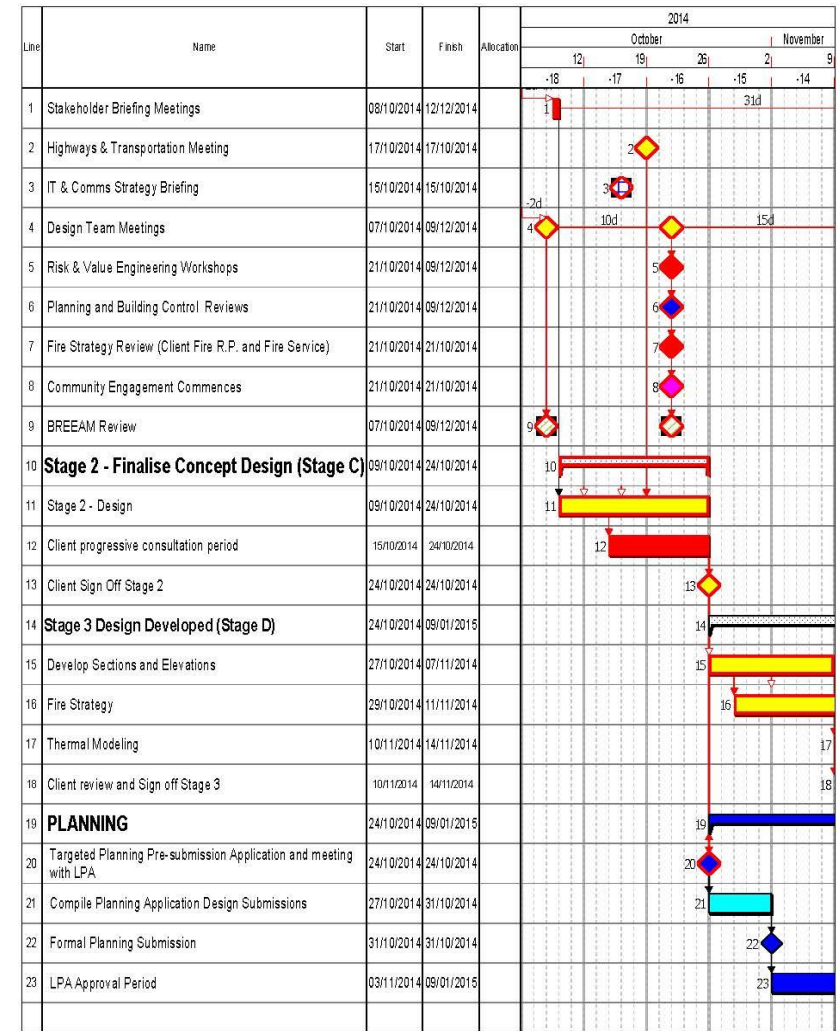
Identification of Critical Items



- Planning and Environmental Impact Scoping
- Flood Consequence and NRW Consultation
- Dwr Cymru Drainage Agreement
- End User Agreement
- Identification of Technical Standards (NSARE VOSA)

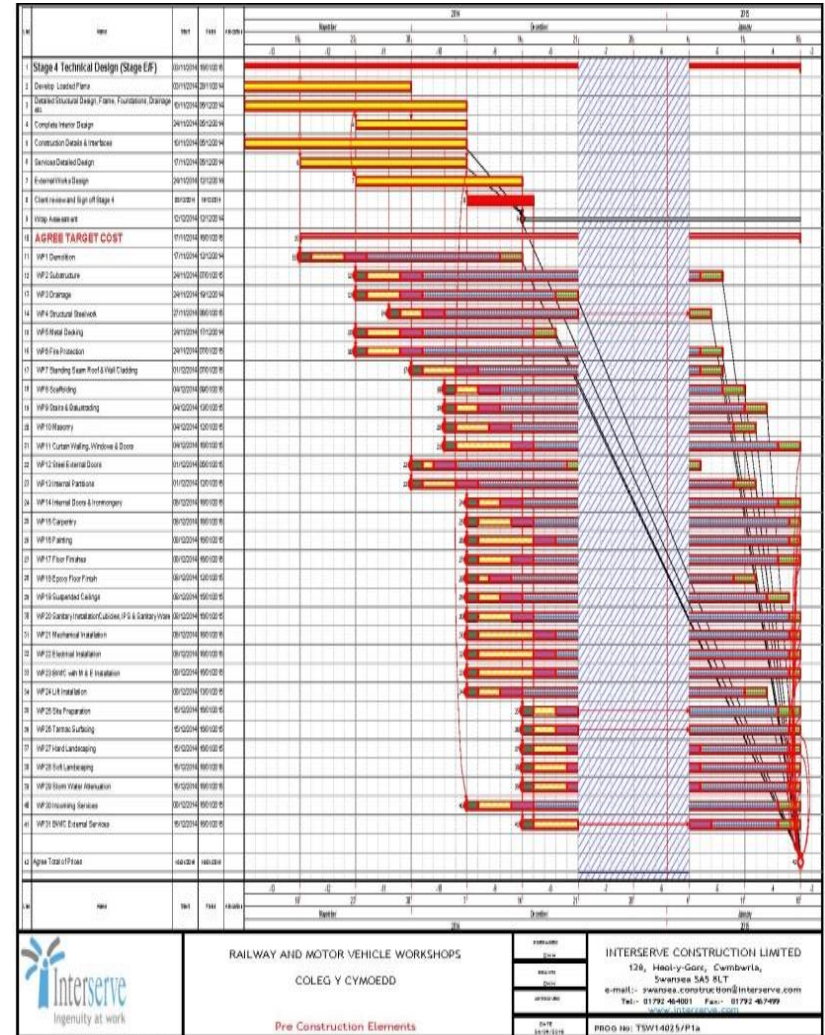
Engagement Programme & Sign Off

- Clear Strategy for Planning at RIBA Stage 2
- Identify Client Sign Off Process
- Clear Identification of Project Risk
- Full Planning Engagement

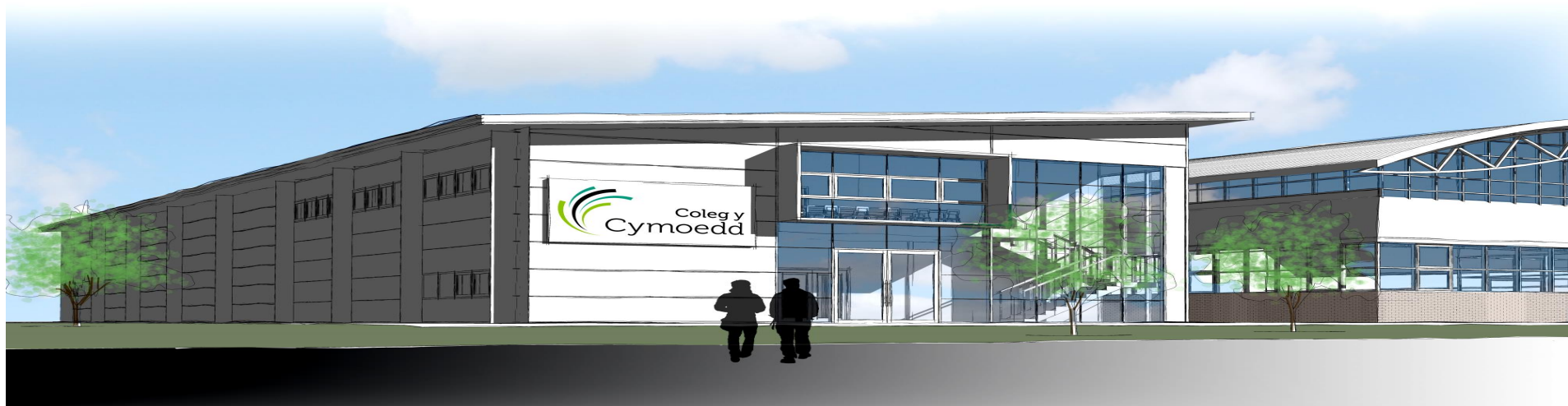


Agreement of Target Cost

- Run in Parallel with Planning
- Use of Benchmarking of Similar Projects
- Identification of Early Construction Design
- Identification of Early Orders



Phil Gilbert - Contracts Manager Interserve Construction



- Challenging 26 Week Construction Period
- Importance of Continuity in Project/Site Team
- Timely Sign Off/Release of Construction Information
- Fortnightly Design Co-ordination Meetings to Ensure Construction Info. Requirements are Achieved
- Regular Programme Reviews with the Project Team
- Importance of Maintaining Collaborative Working

- Established Supply Chain Database
- Early Engagement of Key Supply Chain Members
- Placement of Critical Orders - Ground Works & Steel Frame
- Continued Development Through the Design Process
- Improvements to the Construction Programme

- Early CDM Involvement & Information Release
- Comprehensive & Robust Management Systems in Place
- Integrated and Collaborative Approach with Supply Chain Reflected in the Project H&S Statistics
- AIR of Zero Targeted
- No Accidents to Date
- No Lost Time Injuries (LTI)



Interaction with the College

- Student Site Visits
- Site Presentations/Overview of Construction Techniques given to students
- Participation on Judging Panel for Student End of Year Projects
- Interserve Assisting the College in the Construction of a Woodland Garden



Any Questions

Redefining the future
for people and places





Redefining the future
for people and places